



"E Ala Na Moku Kai Liloloa"

  
**FRIENDS OF SUNSET BEACH** ORG  
NORTH SHORE OAHU  
*Presents Celebrating the Arts! See Back Cover*

NORTH SHORE NEWS November 20, 2024 VOLUME 41, NUMBER 12



*The sun sets on the glorious Haleiwa Theatre, the heart of Haleiwa for 52 years before it was destroyed in 1983  
Photo Courtesy of Vince Cavataio*

## **The Haleiwa Theatre, a Timeless Classic** 1931 - 1983

*By the Historic Preservation Committee - North Shore Chamber of Commerce*

One of the most magnificent buildings ever constructed in Haleiwa, the Haleiwa Theatre was a classic example of much more than just its unique art deco style. It was also a classic symbol of what was done right and what could go wrong.

The structure was designed by Hego Fuchino who left Japan for Hawaii as a teenager and rose to

become one of Hawaii's first and finest Japanese architects. To bring Fuchino's drawings to life, massive boulders in Kemoo Hills Plantation were quarried and expertly cut into twelve-inch blocks by a stonemason from Japan. George Tanabe, the younger brother of the building's contractor Walter Tanabe, helped to haul the stones to Haleiwa. He later recalled how it took two

years to accumulate enough blocks to complete construction of the theatre. The lava rock foundation was finished with a concrete face with multipaned windows and store fronts on either side of the entrance.

Designed as a venue for live performances with an orchestra pit in front of the stage and a trap door

*Continued on page 2*

*Continued from page 1*

to dressing rooms below, the theatre could accommodate 900 people with seats on the main floor and cushioned seats in the balconies. A balcony on one side of the stage was called the Queen's Box in memory of Queen Liliuokalani. The theatre was the epicenter of entertainment for the North Shore community for half a century where families enjoyed vaudeville productions, Japanese plays, Filipino shows, Hollywood movies, concerts, and other events, bringing a touch of class and levity to plantation life.

A smaller theatre known as the Eiraku or Konno Theatre had operated on the site for twenty years previously. Haleiwa's Shimoda family resided on the third floor above the second story theatre and ran a store on the street level. They later ran the concession in the Haleiwa Theatre into the 1940s. Tomitaro Konno, the owner of the Eiraku, led a small group of investors to form the Haleiwa Theatre Company which acquired a lease on the land under the Eiraku, making way for a more modern theatre. The Haleiwa Theatre officially opened on December 15, 1931, with Konno serving as the General Manager, a position he held for decades.

The Haleiwa Theatre provided entertainment for fifty memorable years before the final curtain dropped. Trouble began with a slowdown in the movie business before shows were discontinued altogether in 1978. Then there was the impending expiration of the 50-year lease of the land under the theatre. In 1979, developer Lee Martin stepped into the picture and bought the property on an agreement of sale months before the lease expired in February of 1980. Konno and the Haleiwa Theatre Company filed for dissolution three months later.

Martin had promised to renovate the building but refused to fund any substantial repairs. The future of the theatre hung in the precarious balance between preservation and progress. With a promise that the profits would go into the remodeling of the theatre, Martin received the Neighborhood Board's approval to sell a portion of the land to the Southland Corporation. Instead, he applied for and received a demolition permit from the city. In the early morning of September 9, 1983, a demolition crew shocked the community as the historic structure began falling to the wrecking ball. Armed with a demolition permit issued in error, Martin and his crew ignored city officials' demands to stop the devastation.

Despite protections already on the books under interim development controls enacted by the City Council in 1982, the theatre was irreparably damaged due to a "procedural error" by a clerk within the Building Department unaware of a specific rule. Admitting the mistake, City officials obtained a restraining order the next day. In and out of court for the next few weeks, previously undisclosed details of the path to destruction came to light.

Determined to expose the injustice of the devel-

oper responsible for the damage, Hawaiian Airlines pilot Rick Rogers took flight. From his perch atop the rubble of the theatre, in court hearings and public meetings, Captain Haleiwa as he famously became known, insisted that the demolition permit was never properly issued and the developer needed to be held accountable. The matter was ultimately decided by a citizen panel. With no explanation for its decision, the Building Board of Appeals voted to approve the demolition, sealing the fate of the Haleiwa Theatre. On November 7, 1983, the cornerstone of the Haleiwa Special Design District was destroyed.

From the Haleiwa Special District Design Guidelines established in 1991, to the establishment of the Haleiwa Historic, Cultural and Scenic District in 1984, amended as recently as 2018, the goal has been to preserve and enhance the rural character of Haleiwa going forward. Preventing the demolition of a historic structure on private property is another matter. Had the law in existence at the time been followed and Martin's application for a demolition permit been routed for proper review by the Department of Land Utilization as required, could the theatre have been saved? We will never know, but the legacy of the Haleiwa Theatre and the valiant effort to save it from destruction sparked a movement to ensure the same bureaucratic mistake will never happen again.



*The late Captain Rick Rogers became a local hero as a Caped Crusader on a mission to prevent the demolition of the Theatre  
Photo Courtesy of Lois Rogers*



# GIVE THE GIFT OF WAIMEA VALLEY

Visit the Gift Shop or call 808-638-7766 • Hurry! Holiday specials end December 24

## Kama'āina Annual Passes

- ~~\$40~~ **\$20** Individual
- ~~\$80~~ **\$40** Family
- ~~\$800~~ **\$500** Lifetime

All passholders enjoy 10% off at the Gift Shop and Snack Bar! (Passholders must be Hawai'i residents)

## Kama'āina Holiday Passes

\$5 per pass or 5 passes for \$20! All passes valid for 1 single-day admission through December 2025

## Holiday Plant Sale

Enjoy 20% off at our weekly plant sale throughout the holiday season! Saturdays at the nursery, 8 AM - 12 PM



OPEN TUESDAY - SUNDAY, 9 AM - 4 PM  
Closed Mondays

CALL: (808) 638-7766

@WAIMEAVALLEY  

@WAIMEAVALLEYOAHU 

WHERE HAWAI'I COMES ALIVE

WAIMEAVALLEY.NET



**Representative  
Amy  
Perruso  
Serving You in District 46**

### **The Power of Local Governance in Addressing Hawaii's Challenges**

Hawaii's neighborhood boards are essential to community voice and civic engagement, giving us the power to directly influence issues that affect us all. As the 2025 Neighborhood Board Elections approach, this is your opportunity to play a part in building a brighter, more equitable, and sustainable future for Hawai'i. Neighborhood boards offer us the chance to address critical issues like corruption, climate change, and economic inequality right where we live, impacting not just our communities but the entire state.

### **Why Neighborhood Boards Matter to You**

Neighborhood boards are about putting power in your hands. They give you a platform to discuss the specific concerns facing your neighborhood, collaborate with neighbors on solutions, and hold elected officials accountable. This level of local governance fosters transparency and trust, building a crucial buffer against corruption. When we're informed and involved, we create a built-in system of checks and balances that promotes open government and discourages unethical practices.

But neighborhood boards don't just stop at the community level. The issues we discuss in these meetings influence city and state officials. Our voices from the grassroots level can shape bigger policy discussions, ensuring that our concerns echo all the way to the legislature. This means our local governance efforts are essential not only for direct, community-level improvements but also for strengthening Hawaii's broader democratic process.

### **Addressing Climate Change Together, One Community at a Time**

Hawai'i is feeling the effects of climate change first-hand, from rising sea levels to biodiversity loss. While statewide policies are essential, local action is a critical part of our fight against climate impacts. Through neighborhood boards, we can come together to organize local environmental efforts—whether it's waste reduction, challenging destructive development projects, advocating for green spaces, or pushing for coastal protection.

As we collaborate with local environmental groups, government agencies, and other stakeholders, we can create resilience projects designed specifically for our community. These community-driven efforts are often the front line of environmental defense and offer a model for others in Hawai'i to follow. Together, we can make our communities

more sustainable, resilient, and prepared for future climate challenges.

### **Fighting Economic Inequality Where We Live**

Economic inequality is hitting our communities hard, driving up living costs and putting housing out of reach for many. Neighborhood boards are a powerful avenue to directly address these issues in the places they impact most. When we discuss local concerns, we shed light on these inequities, creating momentum for solutions that address high costs, affordable housing, and more investment in public education so as to improve economic opportunity. Through our neighborhood boards, we can advocate for initiatives like cooperative housing, infrastructure support for small farmers, better land use ordinances, tax fairness, and community-centered workforce pathways. As representatives of our communities, we can push for policies that ensure our economic activity benefits the whole, not just those at the top. Neighborhood boards give us the platform to fight for fairer economic policies at every level, bringing the realities of our neighborhoods to state decision-makers.

### **Get Involved: Key Dates for the 2025 Neighborhood Board Elections**

The 2025 Neighborhood Board Elections are coming up fast. Here's how you can make sure your voice is heard and your community is represented:

**Friday, December 20, 2024:** The election process begins! If you're ready to represent your community or encourage others who care deeply about local issues, this is the date candidate registration forms will be released. Head to <https://www8.honolulu.gov/nco/neighborhood-board-elections/> for more information.

**Friday, February 21, 2025:** Deadline for both voter and candidate registration. Be sure you're registered to vote, or, if you're interested, step up to run as a candidate by this date.

**Friday, February 28, 2025:** Ensure your registration forms, postmarked by February 21, are received by this date.

**Friday, April 25, 2025:** Voting officially begins, and passcodes will be mailed out. Watch for your passcode and be ready to make your voice count.

**Friday, May 16, 2025:** Voting ends. Make sure you've cast your vote by this date to secure your part in the decision-making.

**Friday, May 23, 2025:** All ballots, postmarked by May 19, must be received by this date.

Aloha! Thank you for being part of this journey. Let's work together to create a brighter, more sustainable, and more equitable Hawai'i.

*Happy Holidays!*



# COMMUNITY MEETING NOTICE

## Kamehameha Highway Improvements in Hale'iwa Town (Rehabilitation of Streets, Unit 93)

### Hale'iwa, Waialua District, O'ahu, Hawai'i

On behalf of the City and County of Honolulu (City), Department of Design and Construction (DDC), we invite you to attend a community meeting for the Kamehameha Highway Improvements in Hale'iwa Town ("Project"). The purpose of the meeting is to provide an overview and update of the planned improvements that will enhance pedestrian connectivity and promote an active pedestrian-oriented commercial street frontage, as well as mitigate stormwater ponding along the Kamehameha Highway between the 'Opae'ula Bridge ("Twin Bridges") and Anahulu River Bridge within Hale'iwa Town. Project improvements include the repaving of the roadway, paving the shoulders with permeable concrete pavers, concrete or asphalt (based on site conditions), installation of raised curbs between the roadway and shoulders, a subdrainage system, and underground stormwater storage tanks. The Project was initially conceived of as the Hale'iwa Town Improvement District Project, which requires financial participation from abutting property owners. However, based on community input, DDC has scaled down the project and will fund the improvements as a rehabilitation of streets project through the City's Capital Improvement Program.

#### MEETING INFORMATION:

**LOCATION:** WAIALUA ELEMENTARY SCHOOL CAFETERIA  
(67-020 WAIALUA BEACH ROAD, WAIALUA, HI 96791)

**DATE:** WEDNESDAY, DECEMBER 11, 2024

**TIME:** 6:30 P.M. TO 8:30 P.M.

FOR MORE INFORMATION ABOUT THE PROJECT OR MEETING, OR IF YOU REQUIRE SPECIAL ASSISTANCE, AUXILIARY AID AND/OR SERVICE TO PARTICIPATE IN THIS EVENT (I.E. SIGN LANGUAGE INTERPRETER; INTERPRETER FOR LANGUAGE OTHER THAN ENGLISH, OR WHEELCHAIR ACCESSIBILITY), PLEASE CONTACT JIM NIERMANN AT (808) 842-1133 OR EMAIL YOUR REQUEST TO [jimn@mtowill.com](mailto:jimn@mtowill.com) at least five (5) business days prior to the event.



A festive poster for Santa's Coming to Town. It features a cartoon Santa Claus with his arms raised, wearing a red suit and hat. The background is white with green holly leaves and red berries. A circular logo for Tuesday Market Waialua is visible. Below Santa, the text reads "Santa's COMING TO TOWN" in a stylized font. The date and time are "DECEMBER 17, 2024 3PM - 7PM @ TUESDAY MARKET WAIALUA 67-174 FARRINGTON HWY, WAIALUA HI". At the bottom, it says "PICTURE TAKING & FREE GIFTS FOR THE KIDS SUPPORT OUR VENDORS AND WIN PRIZES! IG/FB: @TUESDAYMARKETWAIALUA".

**Santa's COMING TO TOWN**

**DECEMBER 17, 2024**  
3PM - 7PM @ TUESDAY MARKET WAIALUA  
67-174 FARRINGTON HWY, WAIALUA HI

PICTURE TAKING & FREE GIFTS FOR THE KIDS  
SUPPORT OUR VENDORS AND WIN PRIZES!  
IG/FB: @TUESDAYMARKETWAIALUA



An advertisement for Paalaa Kai Bakery. It features the bakery's logo, which includes a chef's hat and the letters "PKB" with the tagline "Da Best". The main text is "Paalaa Kai Bakery Open 7 Days". Below this is a yellow banner that says "Super Holiday Special". The background shows a close-up of butter rolls. The text reads: "Our Butter Rolls are perfect for your next Thanksgiving Gathering! Limited time, place your order early for rolls and assorted pies! Prepay your early order for 20% OFF or 15% on entire order on Thanksgiving Day." At the bottom, it states: "This offer is valid from Nov 20 - Dec 3, 2024. Cannot be combined with other promotions, discounts, or daBest VIP card discount." The website "www.pkbsweets.com" is listed at the bottom.

**Paalaa Kai Bakery**  
Open 7 Days

**Super Holiday Special**

Our Butter Rolls are perfect for your next Thanksgiving Gathering!

Limited time, place your order early for rolls and assorted pies!

Prepay your early order for 20% OFF or 15% on entire order on Thanksgiving Day.

This offer is valid from Nov 20 - Dec 3, 2024. Cannot be combined with other promotions, discounts, or daBest VIP card discount.

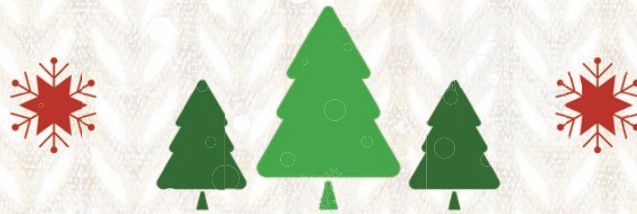
[www.pkbsweets.com](http://www.pkbsweets.com)



YOU ARE INVITED TO

# CHRISTMAS

AT THE  
HUKILAU MARKETPLACE



DECEMBER  
| 16TH - 21ST |

6:00 - 8:00 PM

❄️ JOIN IN ON THE FESTIVE FUN ❄️

WITH SANTA, LIGHTS, TRAIN RIDE, GIVEAWAYS,  
SCAVENGER HUNT & LIVE ENTERTAINMENT! PLUS, IT'S FREE!

FOR DETAILS, CALL 808-369-4171 OR VISIT [HUKILAUMARKETPLACE.COM](http://HUKILAUMARKETPLACE.COM)





# Community Thanksgiving Day Celebration

Co-Sponsored By: Waialua Community Association, North Shore News and North Shore Food Bank

**Come and enjoy a delicious Thanksgiving Brunch  
with Entertainment and Generous Portions of Aloha!  
Everyone is welcome!**

**Waialua Community Association  
(Haleiwa Gym)  
Thanksgiving, November 28, 2024  
9:30am - 12:00pm**

**Call NSN for more information 808-780-8037**

The North Shore Chamber of Commerce presents  
**Historic Hale'iwa  
Christmas Ornaments!**



1931 - Haleiwa Theatre - 1983  
Haleiwa, Hawaii  
2024

**2024 Historic Haleiwa Theater**

**Also Available!**



1899 - Haleiwa Hotel - 1952  
Haleiwa, Hawaii  
2023

**2023 Historic Haleiwa Hotel**



Anahulu Stream (Rainbow) Bridge  
Kalaheo, Kauai  
2022

**2022 Anahulu Stream Bridge**

The iconic Haleiwa Theatre is featured in the 2024 one-of-a-kind custom brass ornament created by Tom Pollard Designs exclusively for the North Shore Chamber of Commerce. You can support the Chamber's work to preserve and protect Haleiwa's historic buildings and sites by purchasing one or more of these stunning keepsake Christmas ornaments. These keepsake ornaments may be purchased for \$20 each or 3 for \$50, available at the North Shore Chamber of Commerce office beginning December 2nd. Pre-order now by calling the Chamber at 808-637-4558.



**Paalaa Kai  
Bakery**  
Open 7 Days

"Da Best"

**ALOHA WAIALUA TOWN**

daBest Deal Club

**Save up to 15% on your sweets  
with our DaBest VIP Card!**



**VIP FREQUENT SHOPPER CARD**

This card belongs to:  
**MS. SNOW PUFFY**

No expiration. Please see back for membership benefits and terms.

Home of Sada's Malassadas and Snow Puffies  
[www.pkbsweets.com](http://www.pkbsweets.com)

**Signup for FREE and  
get your own card at  
the website below!**

[www.pkbsweets.com](http://www.pkbsweets.com)



**Councilmember**  
**Matt Weyer**  
**Serving You in District 2**

Aloha North Shore Community!

As we welcome November and the holiday season, I want to extend warm Thanksgiving wishes to everyone in the North Shore community. This is a time to reflect on the blessings around us and celebrate the spirit of unity that makes our community so special. May your season be filled with joy, delicious meals, and cherished moments with family and friends.

### 3rd Kahuku Pool Design Meeting

On October 29, our office joined the Department of Parks and Recreation, G70, and community members at Kahuku Elementary School for the third design meeting for the Kahuku Pool project. This meeting presented a consolidated draft reflecting input from previous sessions, with an emphasis on community collaboration to shape the vision for Kahuku District Park. Together with the City and design partner, G70, attendees discussed priorities for the park's future, centering on the pool and its infrastructure. It was encouraging to see the enthusiasm from the community as we move toward the 30% design completion milestone.

### Exploring Camp Pūpūkea

At the end of October, I had the privilege of touring Camp Pūpūkea, a hidden gem nestled in Pūpūkea and the home base of Scouting America's Aloha Council. Serving nearly 4,000 Scouts, the Aloha Council offers programs such as Cub Scouts, Scouts BSA, Sea Scouts, Venturing, and Exploring. Camp Pūpūkea provides a beautiful setting for youth development and hosts annual summer and winter camps, fostering skills, camaraderie, and memorable experiences. It was inspiring to see the profound impact of Scouting America's programs on our local youth.

### Sunset Beach Comfort Station Renovations

The Department of Parks and Recreation completed renovations to the Sunset Beach Neighborhood Park comfort station as part of DPR's ongoing Kākou for Parks initiative to revitalize popular facilities. Since 2015, DPR has renovated 167 comfort stations across O'ahu. Mahalo, DPR!

### Leilehua Centennial Homecoming Parade

This year marks a historic milestone, as it's been 100 years since Leilehua's last parade in 1924. The celebration on October 18 honored the school's rich history and community connections, thanks to groups like the Leilehua Alumni and Community Association, Ryugen Taiko, and Wahiawā Lions. We're also grateful to the Honolulu Police Department, the Department of Transportation Services, the Department of Transportation, and all the students, faculty, and community partners

who made this parade truly memorable.

### Policy Updates

As a reminder, bills require three readings at a full Council meeting to be passed and sent to the Mayor for signing into law.

**Bill 22 (2024):** Last month, the City Council passed Bill 22, which proposed legalizing certain fireworks, despite my vote against the measure due to concerns about wildfire risks. The bill was vetoed by the Mayor for safety reasons. At this month's full Council meeting, the Council considered an override but ultimately decided against it, heeding concerns shared by many residents about the measure's potential impacts.

**Bill 64 (2023):** A continuation of what was previously Bill 10, this bill reviews and updates the City's Land Use Ordinance (LUO). Councilmember Esther Kia'āina, chair of the Planning & Economy Committee, has guided discussions through various land uses, including industrial, commercial, residential, public, civic, and institutional. The bill passed its second reading at the full Council meeting this month.

**Bill 59 (2024):** Chair Tommy Waters and I introduced Bill 59 to reduce single-use plastic containers at City facilities and events, addressing plastic waste issues. The bill targets containers under one liter, which are common in street litter and ocean pollution, and harmful to wildlife. Given Hawai'i's low recovery rates for plastic bottles, this measure encourages alternatives like aluminum or glass. The bill passed its first reading at the full Council meeting this month.

Mahalo for staying connected with us at the Council. I hope your November is filled with gratitude and meaningful connections.



Councilmember Matt Weyer at the Leilehua Centennial Homecoming Parade

## North Shore

### Neighborhood Board Meetings #27

**Next Meeting: January 28, 2025**

4th Tuesday of Every Month - 7pm  
 at Waiialua Elementary School Cafeteria  
 67-020 Waiialua Beach Rd.



**Surf N Sea**  
NORTH SHORE, HI  
SINCE 1965

**ANNUAL  
BLOWOUT  
SALE**

**November 15 - January 31**

On the beach since 1965 (808) 637-SURF [surfnsea.com](http://surfnsea.com)

Instagram Facebook Twitter

**SURFER X-ING**

The advertisement features a central collage of surf-related items including surfboards, wetsuits, goggles, and t-shirts. Below the collage is a photograph of the Surf N Sea storefront, a two-story building with a covered porch. A diamond-shaped sign with a silhouette of a surfer is positioned in the bottom right corner. The overall theme is a winter holiday sale for surf gear.





## Ask the Doctor

Nash Witten, MD

Dear Doctor, "What diet do you recommend?"

That's a tricky question! It depends on your goals, such as weight loss, improved cholesterol levels, improved diabetes levels, prevention of diabetes, or improved blood pressure. Type any of the names below into an internet search engine, and the details of each diet should appear. The listed diets below all have good data behind them!

We usually recommend the DASH diet for high blood pressure. This diet is low in saturated and trans fat, low in sodium (as low as 1,500mg/day!), and rich in potassium, calcium, magnesium, fiber, and protein. Interestingly, a diet containing four tablespoons of flaxseeds has been found to reduce systolic blood pressure by up to 10 points!

The Mediterranean Diet and Dean Ornish's "Nutrition Spectrum Reversal Guidelines" are good options for reversing and preventing heart disease. These diets focus on lots of vegetables, fruit, beans, lentils, and nuts and limit the intake of red meat and sweets.

There are numerous options for patients with diabetes or prediabetes, but they all usually boil down to limiting carbohydrate intake. Carbohydrates are foods like rice, bread, noodles, and sweets. The 5:2 Diet has been found to induce remission of diabetes in 20% of patients, help lower body and liver fat, and is seemingly less aggressive than the intermittent fasting diet. One large study even found that initiating a low carbohydrate diet within the first year of being diagnosed with diabetes resulted in remission in 70% of patients!

Although most patients view us as "legal drug dealers," in reality, lifestyle interventions (aka no medications!) are critical to the prevention and often treatment of most chronic medical conditions we see in primary care.

*Dr. Nash Witten is a Board Certified Family Medicine physician at the Queen's Health Care Centers Haleiwa, located at 66-125 Kamehameha Hwy., Haleiwa, HI 96712. The clinic is accepting new patients, call 808-691-8501 to schedule an appointment. Submit questions to the doctors at [nsnaskthedoctor@gmail.com](mailto:nsnaskthedoctor@gmail.com).*



## Schedule of Christmas Events

### **Tree Lighting Ceremony & Santa Visits**

North Shore Market Place  
November 30, 2024  
5:00 PM to 8:00 PM

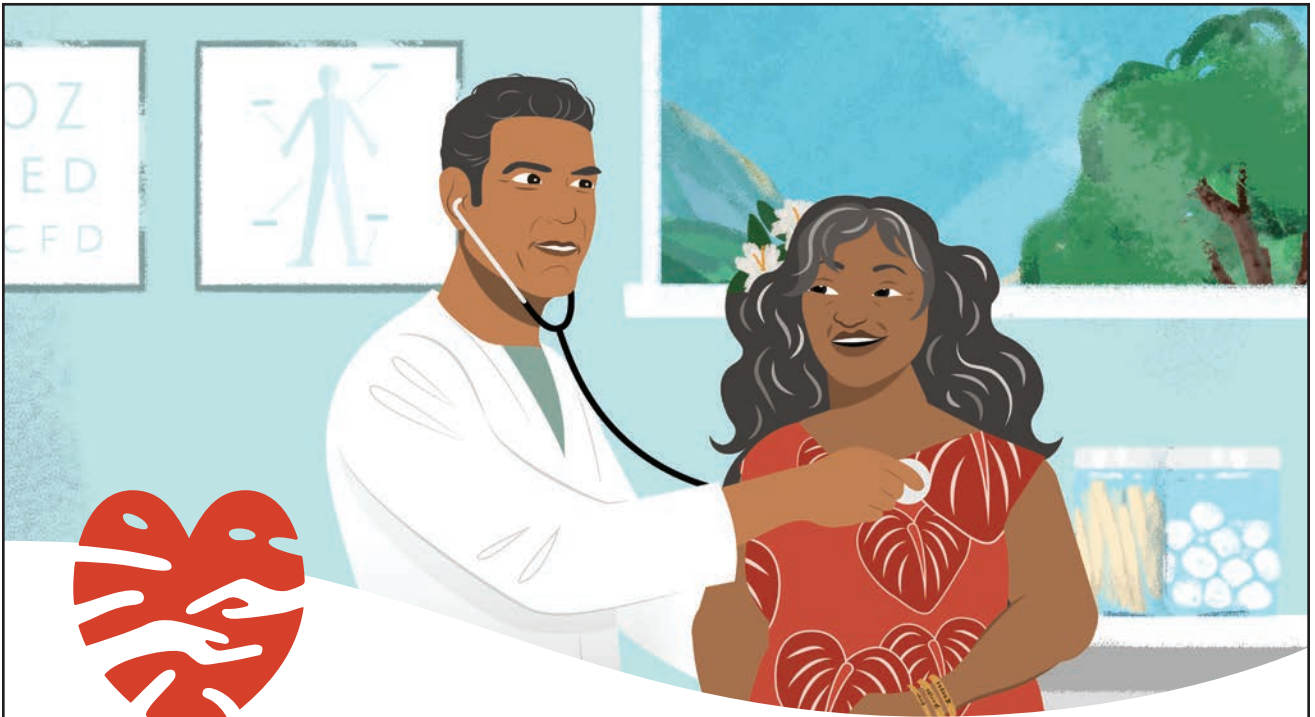
**Best Decorated Building Contest**  
Haleiwa Mainstreet  
December 1-12, 2024

**Santa Visits (before the parade)**  
North Shore Market Place  
December 13, 2024  
4:00 PM to 6:00 PM

**Haleiwa Christmas Parade**  
Haleiwa Mainstreet  
December 13, 2024  
6:00 PM to 8:00 PM

Parade route closes to traffic  
5:30 PM - 8:30 PM





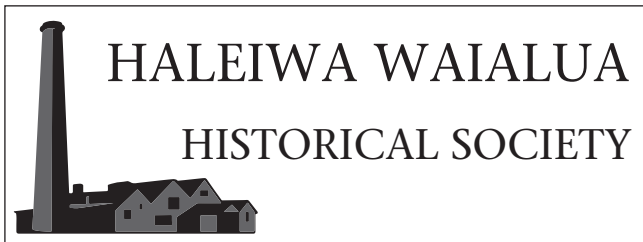
## MEDICARE MEMBER BENEFITS THAT PUT YOU FIRST.

- Pre-Paid Flex Card to help pay for food, utilities and more
- Vision care and glasses
- Preventive dental, crowns and dentures
- Hearing aids and more

LEARN MORE [Discover.AlohaCare.org](https://Discover.AlohaCare.org)

1 (877) 812-0249 (toll-free) | TTY/TDD: 1 (877) 447-5990





## HALEIWA WAIALUA HISTORICAL SOCIETY

### Little Known North Shore Historic Hotels

*By Boyd Ready, Local Historian*

The former Haleiwa Hotel is well known. Less so were the 'Seaside Hotel,' the 'Doi Hotel,' the 'Fujita Hotel,' and the large hotel at the Kahuku Marconi Transmitter. All were accessible by railroad. Let us focus on two of these.

The 'Seaside' hotel that the Jodo Mission bought for a temple and school in 1913, started out as the 'Waialua Beach Hotel.' Twelve rooms, sea breezes and sea bathing, fine food, and a wine cellar that 'never runs out' was advertised in 1901-1903. It was right near the Waialua Train Station (near today's Ali'I Beach Park, at the south end). Compared to the \$4.00 per night at the Haleiwa Hotel, the fee of \$2.50 per night was more reasonable. The hotel had cash flow problems though. The Haleiwa Hotel attracted most of the well-heeled clientele. A few honeymooners and other travelers proved not enough: it had its furnishing nearly repossessed in 1902, and then it was foreclosed upon in 1903 by Lewers and Cooke, Ltd., who put it up for sale. Little is known after that until 1913 when the enterprising Rev. Jit-sujyo Muroyama and his congregation went door to door on horseback and raised \$1,500 to buy it. The Haleiwa Jodo Mission continues today, 111 years later, and is well known island wide for the annual floating lantern ceremony in Waialua's calm mid-summer waters. It was placed on the Historic Registers in 2019.

Who knew there was a hotel at the Marconi Transmitter site in Kahuku? The huge double-backed-up, steam-powered generators and giant 'spark' transmitter, with 500-foot-tall steel masts and guidewires required a hundred employees to operate. It took nine 'riggers' to keep the masts secured and painted every six months against salt corrosion. The hotel had twelve rooms, a library, reading room, kitchen, and servants' quarters. There were six remnant buildings on the Kahuku site when it went on the National Register in 2012. The hotel was in good enough condition for restoration or adaptive re-use. A similar hotel at the Marconi 1914 facility on Koko Head is still in use as the Lunalilo Trust care home. Adaptive re-use is the key to preserving our historic buildings!

To learn more about the Society, please visit [www.waialuahistoricalsociety.org](http://www.waialuahistoricalsociety.org)



*Haleiwa Jodo Mission formerly the Seaside Hotel Photo Courtesy of Haleiwa Jodo Mission*



*Architects' depiction of Marconi Kahuku site hotel if restored Photo 12/22/2016, 'SecondShelters' website*

DEPARTMENT OF PARKS AND RECREATION (DPR)  
WAIALUA COMPLEX COMMUNITY EVENT AT  
SUNSET BEACH RECREATION CENTER (SBRC)

## *Santa's Corner*



**Free Family Event**

**Saturday, December 14, 2024**

**4:00 p – 6:00 p**

Gymnastics presentation

4:45 p – 5:30 p

Take a free picture with Santa

5:30 p – 6:00 p

Free craft Take-N-Make activities

5:30 p – 6:00 p

Volunteers are needed.

For more information, please call (808) 638-7213





# Football - The World's First Language

Nelson Mandela said, "Sport has the power to unite in a way that little else does. It speaks to youth in a language they understand." The non profit soccer and leadership program, Malama Football Club has partnered with The HOAPILI youth to unite a group of soccer enthusiasts who are going through their own mental and physical challenges.

Do you want to know their secrets to living a good life? Coach Chuck caught up with a few of them, and here is what they said - Big Frank Jr says, "Oooooohh, OH! OH my secret is to make good friends, and have NO crushes, and eat apples everyday and ALLLLLLL the other kinds of fruits that I like. My Papa tells me to STAY GROOVY and my grandma Silinga says "ALWAYS BE KIND AND BE FRIENDS." Our fastest footballer Maddy advises, "It's not about winning or losing, it's about having fun and being together! That way we all win. Soccer has taught me to work together as a team and to have fun!" Our famous footballer Briar, who loves seeing her friends at soccer practice said, "The secret to a good life is to love Jesus, and play & watch sports!"

What an unrivaled group of athletes! A sincere thank you to our sponsors - Dave's Ice Cream for hosting our Ice cream party, McGee's Stamp & Trophy for donating our Trophies, Soccer Locker Hawaii for the donated gear, and Aaron the DJ from DJ's of Hawaii for throwing us a dance party. Lastly, Mahalo nui

loa to our staff, community, and athletes who teach us how to adapt to life with a heart of gratitude and positivity. Check out [www.malamafootballclub.org](http://www.malamafootballclub.org) to check out the action & reach out to [malamafootballclub@gmail.com](mailto:malamafootballclub@gmail.com) to learn more about becoming involved as a sponsor or youth participant.



Footballer Ma'a - a chemistry wizard when he's not netting goals. Photo: Tay Steele



## FarmLovers Market Hale'iwa Thursdays 2PM-6PM at Waimea Valley



FARMLOVERSMARKETS.COM

# 47th Annual North Shore Menehune Surf Contest Results

## 4-6 BOY GIRL SHORTBOARD

1. Kaeo Lindo
2. Ehukai Chapman
3. Penny Camidge
4. Kawela Nellen
5. Kahana Kai Bradshaw
6. Harper Manafort



## 7-9 GIRLS LONGBOARD

1. Tehilah Amir
2. Luana Lockett
3. Kennah Fujimura
4. Coral Ellison
5. Hana Eveland
6. Addie Doell

## 10-12 GIRLS LONGBOARD

1. Malayna Schiffner
2. Sarasa Ishibashi
3. Chaya Doner
4. Sadie Gold
5. Eva Mochkatel
6. Jesse Johnson



## 7-9 BOYS LONGBOARD

1. Kenta Uchimura
2. Sota Uchimura
3. Kūhela Rowland
4. Alexander Kaimana Puma-Silva
5. Drift Achime
6. Thor Gardener

## 10-12 BOYS LONGBOARD

1. Max Clearwater
2. Luciano Romeo
3. Desmond Barber
4. Lono Ferguson Young
5. George Franklin Smith V
6. Max Hanson



## 7-9 GIRLS SHORTBOARD

1. Lani Santos
2. Gigi Stedman
3. Pele Wahinehula Aliiku Star
4. Oona O'Flynn
5. Liliko'i Young
6. Nanea Manuel

## 10-12 GIRLS SHORTBOARD

1. Zoe Bradshaw
2. U'ilani Nakao
3. Sophia Gannon
4. Emma Colandrea
5. Malia Oliveira
6. Adiyah Ho

## 7-8 BOYS SHORTBOARD

1. Kama Miranda
2. Jack Moody
3. Imai Hoff Espinosa
4. Jetson Fletcher
5. Maverick Caravillo
6. Cruz Makana

## 9-10 BOYS SHORTBOARD

1. Jaizen Jo Puahi
2. Keahi Lee
3. Ian Moody
4. Dom Carvalho
5. Lincoln Patacchia
6. Gian Nakano

## 11-12 BOYS SHORTBOARD

1. Aukai Tanaka
2. Ryder Prouty
3. Devo Magyar
4. Kea Moody
5. Kingston Palakiko
6. Chase Friel

**Mahalo Sponsors!**





# @Banzaibetty Press

## SUNSET WAVE, DA BOSS

Luke Tema is now number one after an amazing victory at Sunset's proving ground. A substantial swell came in with perfect harmony for the Hawaiian Islands's Sunset Pro. The conditions ranged from 6-12 feet and super windy conditions for the event. Tema handled it all clinching the title with a last wave scored at 8.35 out of ten in the final. "I had a lot of close heats but I'm stoked to come out on top", said Tema. "I thought I was done when I got the worst of the first exchange but then that 8 came at the end.." Tema beat last year's winner Shion Crawford who almost pulled off a back to back title. It was the case for the women also. Tomoda-Bannert was strong all finals day and almost pulled out that back to back win. It was Hawaiian Eweleiu Wong who outsmarted the final 4 by great positioning! "My coach said get two 8's." She said after the win. "I hardly surf Sunset, I'm stoked to have won... hopefully I'll prequalify for the Challenger Series next year." The Women are surfing the Supergirl Pro in Florida as the men wait for the next opportunity at Haleiwa. The World Surf League 2025 season starts at Pipeline in January. Hawaii's Jackson Bunch has qualified for the top tour along with Tahiti's Vahine Fierro. Tahiti is combined with our Hawaii district.

### Women Field 32

- Eweleiu Wong HAW 14.00
- Keala Tomoda-Bannert HAW 9.90
- Kiara Goold PYF 7.30
- Moana Jones Wong HAW 5.25

### Men Field 96

- Luke Tema HAW 14.85
- Shion Crawford HAW 14.50
- Luke Swanson HAW 12.30
- Tory Meister HAW 10.90

## WING FOILING TAKES OFF

Looking at the ocean you might have noticed a rider holding onto a sail and riding waves. Yes wing foiling is taking off. According to Wing Foil Magazine the sport started around 1980 but it was Hawaii's Kai Lenny who made the ride popular with a viral video. Cash Berzolla, 18, an American surfer is now the top rated athlete. We also have a Hawaiian wahine competing, Moona Whyte she can ride anything! The World Champion kitesurfer is rated 6th in foiling. We will keep an eye on Patagonia team rider Whyte's accomplishments. Go Hawaii!

## BODYBOARDER HONORED AS HAWAII WATERMAN

The Outrigger Duke Kahanamoku Foundation has honored Kanesa Duncan Seraphin an 8 time World Champion paddleboarder at the M2O paddleboard race. Seraphin is also an avid bodyboarder who has competed at Pipeline many times. Beyond her accolades in paddleboarding, Kanesa has made significant strides in marine science education. As a Professor and Director at the University of Hawai'i Sea Grant Center for Marine Science Education, she is dedicated to nurturing a deeper understanding of ocean ecosystems among students and the general public. Her innovative teaching methods and dynamic outreach programs engage learners of all ages, emphasizing the critical importance of preserving marine environments. Congratulations Kanesa!



Hawaiian Islands Sunset Pro Photos: @banzaibetty



Dear Editor:

**A Heartwarming Thanksgiving Story**

A blind boy sat on the steps of a building with a hat by his feet. He held up a sign which read "I am blind," please help.

There were only a few coins in his hat.

A man was walking by. He took a few coins from his pocket and dropped them into the hat. He then took the sign, turned it around, and wrote some words. He put the sign back so that everyone who walked by would see the new words.

Soon the hat began to fill up. A lot more people were giving money to the blind boy. That afternoon the man who changed the sign came to see how things were.

The boy recognized the footsteps and asked, "Were you the one who changed my sign this morning? What did you write?"

The man said, "I only wrote the truth, I said what you said in a different way." I wrote: "Today is a beautiful day but I cannot see it."

Both signs told the people that the boy was blind. The second sign told people that they were so lucky that they were not blind. Should we be surprised that the second sign was more effective?

Moral of the story: Be thankful for what you have. Be creative. Be innovative. Think differently and positively. When life gives you 100 reasons to cry, show life that you have 1000 reasons to smile. Face your past without regret. Handle your present with confidence. Prepare for the future without fear. Keep the faith.

The most beautiful thing is to see a person smiling. And even more beautiful, is knowing that you are the reason behind it!

Happy Thanksgiving!

Anonymous

In a world where you can shop anywhere...

**SHOP LOCAL**

**North Shore News - Christmas Issue**

<b>Publication Date</b>	<b>Deadline Date</b>
<b>December 18</b>	<b>December 4</b>

Aloha Editor:

**NO Speed Humps**

From Kaukonahua Rd., to Waialua, to Laie and East Oahu residents are complaining about the speed humps!

Express your concerns opposing the new or existing speed humps to the highway administrator

George Abcede at 808-587-2220. He said they have NOT heard many complaints from our community. Let our voices be heard!

Mahalo,  
NS resident

Dear Editor:

**Regarding Development across from Shark's Cove**

I am in favor of having a First Responders' Center between Hale'iwa and Kahuku mostly because of the need for an ambulance and the Laniākea traffic mess. On average, it takes about 40 minutes to travel from Pūpūkea to Hale'iwa now when it used to take 15 minutes. This delay could mean someone's life.

However, I am not in favor of taking the only commercially zoned property in Sunset to do this. Instead, we should use the former Obayashi land next to the Sunset Beach Elementary School that the City already owns. It would be foolish and fiscally irresponsible for the City to pay millions of dollars for the Shark's Cove development land when it has a piece of property across from 'Ehukai Beach Park.

Let's stick to the current 2010 North Shore Sustainable Communities Plan that calls for a rural shopping center that serves the residents. This will be closer to Sunset Beach residents, more convenient, and alleviate some of the traffic to and from Hale'iwa. Runoff catchment can be planned in the design and mitigated to protect Shark's Cove. We should hold the developer to the plan by having businesses that serve residents rather than visitors.

Anonymous

Waialua Bandstand  
Presents

**Ian O'Sullivan**

**Sunday, December 1, 4pm**

*Bring your lawn chairs and enjoy the show!*



# Healthcare FOR surfers BY surfers



KHC's surfing Primary and Podiatry doctors know how to take care of active people.

We're always accepting new patients with and without insurance.

Low cost Pharmacy & clinics in Kahuku and Hauula.

Call 293-9231 for an appointment.



[www.koolauloachc.org](http://www.koolauloachc.org)

## Sts. Peter & Paul

59-810 Kamehameha Hwy.

# CHRISTMAS

## Craft Fair

December 8th

Sunday 10 am to 1 pm



**CRAFTS, FOOD,  
BAKE SALE,  
PICTURES WITH SANTA,  
PETTING ZOO,  
GREAT GIFTS FOR  
CHRISTMAS**

Vendors - for Information  
contact Cyndle @808-226-1429 or  
Debble @ 808-542-6549

# Frobaby™

WEDDING & EVENT DJ TEAM

## WE PACK DANCE FLOORS

Website



WEDDINGS  
CORPORATE  
MILITARY  
PROMS

Instagram



[www.frobabyproductions.com](http://www.frobabyproductions.com)

(808) 427-8080

[events@frobabyproductions.com](mailto:events@frobabyproductions.com)





# WAIALUA

## FEDERAL CREDIT UNION

Serving the North Shore Community

[www.waialuafcu.com](http://www.waialuafcu.com)

(808) 637-5980

- SAVINGS
- CHECKING
- LOANS

**friends  
of the  
Waialua  
Library**



67-068 Kealohanui St, Waialua, HI 96791  
[FriendsofWaialuaLibrary@gmail.com](mailto:FriendsofWaialuaLibrary@gmail.com)  
 808-637-8286

### **Writers' Group**

Thursday, Dec. 12, 9:30-11am

Topic: "Remembering Dad"

### **Readers' Group**

Thursday, Dec. 5, 9:30-11am

Title: "A Christmas Carol"

by Charles Dickens

### **Computer Introduction**

by appointment - 808-637-8286

### **Family Story Time & Craft**

Every Saturday, 10:00am

### **No December Book Sale**

But if you have books to donate  
 email [cdurant808@gmail.com](mailto:cdurant808@gmail.com)

Closed November 28th Thanksgiving



### **100 Smiles of Margareta Nelson Celebrating her 100th Birthday**

On October 17, 2024, long time resident Greta Nelson of Waialua celebrated her 100th birthday with many of her friends and her children Ben, Stan and Nancy, and five grandchildren who traveled from Massachusetts, Arizona and Utah.

Life has never been dull for Greta.

In the 1940's she became an open cockpit airplane pilot entering races, doing spins and occasionally buzzing Franklin Stadium during the University of Pennsylvania football games.

During WWII, Greta volunteered driving trucks at Willow Grove Naval Air Station while our armed services were fighting in the Pacific.

Greta has always been active in sports: tennis, golf, fishing, hunting and she was nationally ranked in squash.

Growing up in Pennsylvania, Greta always dreamed of moving West. In 1961 she moved the family to Scottsdale. When that area became too crowded they went to Pinetop, Arizona in the White Mountains at 7000 ft. where the occasional bear broke into her birdfeeders. Rattle snakes were not so welcome with Greta killing more than fifty during her years in Arizona.

Greta was an active and valued member of the North Shore Outdoor Circle and for many years she was often seen pulling weeds along the Sunset Beach Bike Path.

She still maintains her own home and until recently she could be seen walking her Waialua neighborhood.

We look forward to Greta's 101st birthday. Until then you can catch a glimpse of her at Haleiwa Joes on Mondays with her son, Stan.



# Bulletin Board

## Munden Design & Build

Lic.#BC19632

Design • Plans • Permits • Construction  
Additions & New Residences

808 391-8616

*Providing quality work since 1978*



**World Class Notary**  
Serving all of Hawaii

- Fingerprinting
- Notary
- Apostille
- FBI Background Checks
- Document Translations

[www.worldclassnotary.com](http://www.worldclassnotary.com) | 808-489-6900

## N-C PLUMBING & SUPPLY

Cont. Lic. No. C-8913



- RESIDENTIAL & COMMERCIAL SALES & SERVICE
- CONTRACTING & DESIGN
- HOME PLUMBING SERVICE
- PLUMBING FIXTURES, HEATERS • FREE ESTIMATES

Nestor P. Calilao (Owner)  
P.O. Box 769  
Waiialua, HI 96791

Business: (808) 637-8662  
Cellular: (808) 372-8718

## Cinderella Incineration Toilets

No water, no sewage, electric or propane powered  
Complete waste handling solution  
End product is sterile ash



[www.ocr2000.com](http://www.ocr2000.com)  
808-262-2724

**Aloha WHIS Alumni**  
The Class of 1975 cordially invites  
you to the 27th Jubilee on  
Wednesday, April 30, 2025 at the  
California Hotel, Las Vegas.

Come connect with long-time friends and  
relive memories at WHIS  
For info: email [WHISJubilee2025@gmail.com](mailto:WHISJubilee2025@gmail.com) or mail  
a self-addressed envelope to:  
PO Box 894153, Mililani, HI 96789  
Registration begins January 1, 2025.

## TILE INSTALLATION

Lope Fuentes Lic# 31228  
[lope.fuentes@gmail.com](mailto:lope.fuentes@gmail.com)  
808-276-2257

[www.fuentesstoneandtile.com](http://www.fuentesstoneandtile.com)

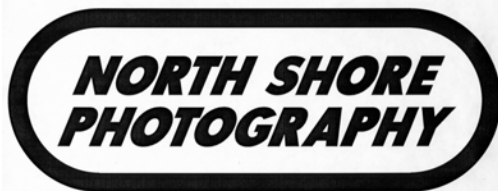
## ICC MOBILE DETAILING

- Interior Deep Cleaning
- Water Spot Removal
- Paint Enhancement



Alex Racoma  
808.638.1900

Professional Car Detailing At The Comfort of Your Home



HALEIWA, HAWAII

Over 50+ Years of Professional Services and Historic  
Images to the Community. AKA "Nostalgic Photos Hawaii"  
To See 1000+ Images Search: [northshorephotohawaii.com](http://northshorephotohawaii.com)



Would you like to  
receive the  
North Shore News  
via email  
FREE and in  
COLOR?

Just send us a  
message at:  
[NSNHaleiwa@gmail.com](mailto:NSNHaleiwa@gmail.com)



at Hale'iwa Store Lots - Dine In or Take Out  
Mon, Tues, Thurs 11:30am - 8pm  
Fri, Sat, Sun 11:30am - 9pm  
Wednesday 4pm - 8pm 808-784-0023

# Kahuku Public & School Library HAWAI'I STATE PUBLIC LIBRARY SYSTEM

## DECEMBER 2024

TUE  
12/03  
6pm



**North Shore Singer's Company: When Christmas Comes to Town**  
Ring in the holidays with the coolest choir around.

TUE  
12/10  
5pm



**Healthy Holiday Treats with Leisha Skaggs & Amy Nielsen, RD, PhD**  
Eat well and be merry with us! We'll be dishing out nutrition facts and talking Telehealth.

TUE  
12/17  
5pm



**Holiday Bash**  
Join us for winter festivities at the library and spread that holiday cheer!  
RSVP requested.

THU + FRI  
12/05 +/06  
12/12 + 13  
12/19 + 20  
01/02 + 03  
3:45-4:45pm



**Vex IQ Robotics Workshop with Kamuela Sonognini**  
*Best suited for ages 10-13*  
'Tis the season for tinkering! Join us for a workshop series that will activate your tech brain and sharpen your building skills.

MON  
12/09  
10:30am-12pm



**The Journey Workshop Session 4: Speaking for All Keiki**  
*For children aged 0-5*  
This is a caregiver-child activity, so please attend together. Reserve your spot online or call the library.

### Recurring Programs

**Tues. 5:30pm**  
Tai Chi  
**Wed. 12/4 + 12/11** ○ 10am  
Story/Play Time  
**Wed. 12/11 + 12/18** ○ 1-3pm  
Lego Club

**Closed on  
Wednesday, 12/25- Christmas**

### Book Club



**ADULT**  
**Monday, 12/30**  
1:30pm

### Kūpuna Hour

**Basic 'Ōlelo Hawai'i w/ Aunty Gigi of Ke Ola Mamo** - See website for more information  
**End of the year pa'ina- December 12th at 10am**

For more information, visit us online at [www.librarieshawaii.org/kahuku](http://www.librarieshawaii.org/kahuku)



@friendsofthelibrarykahuku





### OPERATION: CHRISTMAS CHEER!

LET'S STIR UP THE CHRISTMAS SPIRIT and help spread "Christmas Cheer" to our neighbors in need. This holiday season North Shore News and North Shore Food Bank (OAMC) will be collecting new unwrapped toys, Christmas goodies, toiletries, non-perishable foods etc... to be delivered and distributed to our North Shore neighbors.

We will be collecting donations at the following locations:

Waialua Community Association (parking lot)  
Saturday, December 14, 8am-2pm  
Thursday, December 19, 8am-4pm

North Shore Chamber of Commerce  
December 11-19 Mon-Fri 11am-3pm

Rajanee Thai  
December 11-19 Wed 4pm-8pm  
Mon-Tues, Thurs-Sun 12pm-7pm

Kokua General Store  
December 11-19 Tues-Thurs 11am-4pm  
Fri-Sat 10am-3pm

Waialua United Church of Christ  
Tuesday Market, December 17, 3pm-6:30pm

Monetary donations by check, credit card or online are accepted  
North Shore News or Once A Month Church  
PO Box 117, Haleiwa, HI 96712

For more information call Linda  
(808) 780-8037  
Happy Holidays!  
Mahalo for your continued support!



### North Shore News



### 2025 Schedule

PUBLICATION DATE	EDITION	DEADLINE DATE
January 15	1	January 3
February 12	2	January 29
March 12	3	February 26
April 9	4	March 26
May 7	5	April 23
June 4	6	May 21
July 2	7	June 18
July 30	8	July 16
August 27	9	August 13
September 24	10	September 10
October 22	11	October 8
November 19	12	November 5
December 17	13	December 3

MOKULEIA · WAIALUA · HALEIWA · KAHUKU · LAIE

The North Shore News is published every 4 weeks and available at area businesses including Waialua, Kahuku and Wahiawa libraries.  
The North Shore News is also available for free in color by email or by mail subscription please contact us. Mahalo for your continued support!

"The North Shore's most popular publication" since 1970  
(808) 780-8037 · NSNHaleiwa@gmail.com

## NORTH SHORE FOOD BANK

IG:@nsfoodbank  
Sponsors: Hawaii Food Bank & Aloha Harvest

### DISTRIBUTION UPDATE

3rd Wednesday of the Month  
at Kaiaka Bay Beach Park

Wednesday, December 18, 12 noon

Wednesday, January 15, 12 noon

*Happy Holidays*

For more information and donations contact :  
Linda (808) 780-8037





# CLASSIFIEDS

The North Shore News is published every four weeks and available at area businesses and locations. Digital copies are emailed in color. The North Shore News is also available by mail subscription.

**PRESS RELEASE POLICY:** Submit press releases, email to the Editor. Releases should be viable news stories or human interest stories and are published on a space available basis only. You may attach photos. We reserve the right to edit and/or refuse all submissions including advertising.

**EDITORIAL POLICY:** The North Shore News is a community paper. We welcome articles, pictures and Letters to the Editor.

**CLASSIFIED AD RATES:** Classified ad rates are \$6.00 per line with up to 27 characters per line. The box ads are \$40.00 per column inch. Submit classified ads by email. Phone calls are always welcomed.

Views expressed by our contributing writers and advertisers do not necessarily reflect the view of the management and staff of the North Shore News. All rights reserved. Reproduction in a whole or part without permission is prohibited. 2024

**Editor & Classifieds**

Linda Seyler

**Typography**

Downtown General Store

**Contributing Writers**

Betty Depolito

Richard Sterman

Noah Grodzin

Councilmember Matt Weyer

Representative Amy Perruso

Penny Nakamura

**Photography**

Banzai Productions

Bill Romerhaus

North Shore Photography



Please recycle this newspaper.

**SERVICES**

**LegaSea Energy Solar**

Christensen Bros.  
Construction Inc.  
since 2005

Specializing in off grid livin'  
Custom homes  
License BC 27977 -  
**808-351-4657**  
@legasea\_energy

**BEE HIVE**

\$250.00/ 10 FRAME BEE HIVE  
LANGSTROTH  
WILL PROVIDE ASSISTANCE  
MASTER BEEKEEPER  
682-1955.

**LOCAL AUTO BODY & PAINT**

Call Rick (808) 216-9419

**Andres Plumbing Residential & Commercial**

License #C-24500  
35 yrs experience  
**808-256-7337**

**HONEY BEE HIVE SWARM**

Removal & Relocation  
(808) 724-9966

**ANGELS PLUMBING**

Repairs  
Remodeling  
Renovation

**638-7878**  
Lic. #C12004



**FREE ADS**

Garage & Yard Sales,  
Reunions, Lost & Found.  
Email ad to:  
NSNHaleiwa@gmail.com

**HAWAII TREE CO.**

Trimming & Removal  
Professional-Reliable  
Free Estimates  
808-462-2749

**GERMAN CAR SERVICE**

Professional-Qualified  
Technician  
Call Gary  
637-6800

**ICC MOBILE DETAILING**

Interior deep cleaning,  
water spot removal,  
paint enhancement.  
Professional car detailing  
at the comfort of your home.  
**808-638-1900**

**Cinderella Incineration Toilets**

No water, no sewage, electric  
or propane powered, complete  
waste handling solution.  
End product sterile ash.  
www.ocr2000.com  
**808-262-2724**

**DOG/CAT NAIL TRIMMING**

At your home-only \$30  
Call (808)-388-5336

**Noah Boy Pump Service LLC**

Cesspool, Septic &  
Porta Potty Sewage Waste  
Contact:  
Noah **(808) 489-7850**

**Paumalu Electric Inc.**

new construction,  
remodels and rewiring,  
service and repairs.  
Lic. C-18074 808 638 9054

**Retired General Contractor**

30 plus years -Specializing  
in home and structural  
repairs, fencing, painting  
and more.  
Gregg Biemann  
**808-778-0234**

**North Shore Mobile Welding Services Custom Gates (aluminum etc...)**

(808) 223-4840 Ryan

**North Shore Dump Runs**

Call for Prices  
(808) 223-4840

**BUSINESS SERVICES CENTER**

Fast & Convenient Copy, Fax, Scan,  
Computer/Internet, Laminate, & More



Across from  
the Haleiwa  
Post Office

**637-4558 • gonorthshore.org**  
**#gonorthshore**

**Telehealth Services** at the  
Kahuku Public and School  
Library

Do you struggle to get to your  
doctor's office visits? Are you  
interested in talking to your  
doctor from the comfort of  
your home or local library?  
We can help! We offer FREE  
on-site and in-person support  
for telehealth visits in the  
library, technical help and  
training for telehealth visits,  
and offer options to check out  
a telehealth kit to use from  
home. Please contact Leisha  
at leisha@hitelehealth.org or  
(808) 462-0605

**HOW TO CONTACT THE NORTH SHORE NEWS**

Letters to the Editor, and other items submitted for publication consideration  
may be sent to us via:

MAIL: P.O. Box 117, Hale'iwa, HI 96712

E-MAIL: NSNHaleiwa@gmail.com

NSN4Linda@gmail.com

PHONE: (808) 780-8037

www.northshorenews.com



# CLASSIFIED ADS

**Next Issue - Dec 18, 2024**  
**Deadline Date - Dec 4, 2024**

**Would you like to receive the North Shore News via email in COLOR!**  
Just send us a message at: NSNHaleiwa@gmail.com

**OFF da ISLAND**  
Are you leaving Oahu on vacation or business? Do you live on a neighbor island, the mainland or foreign country and subscribe to the NSN? Send us a photo with someone in front of a sign or landmark holding a copy of the NSN or send a photo without the NSN. Email your photo with a caption including names, place of residence and photo location. NSNHaleiwa@gmail.com

**ANIMAL CRIME STOPPERS**  
**955-8300**  
Be their voice.  
Be anonymous.  
Loyalty works both ways.  
HonoluluCrimeStoppers.org

**FREE ADS**  
Garage & Yard Sales,  
Reunions, Lost & Found.  
Email ad to:  
NSNHaleiwa@gmail.com

**Internship and Scholarship Opportunities Now Open for Hawaii Students Interested in Intelligence, Cybersecurity and More**  
The Pacific Intelligence & Innovation Initiative (P3I) and its partners are opening pathways for students, young professionals and military personnel interested in pursuing careers in Hawaii's defense sector. Application deadline approaching for Summer 2025 opportunities. For more information visit hawaiiip3i.org

## HELP WANTED

**Household Help**  
Beachfront Estate  
16 hours per week  
808-637-0808

**MATSUMOTO SHAVE ICE**  
Now Hiring!  
Apply in person daily  
10am - 6pm  
808-637-4827

## FOR SALE

**OCEAN VIEW 5 ACRE HALEIWA FARM LOTS FOR SALE \$700K AND UP**  
Ralph Gray RA  
Lic# 57803  
Hawaii Homes International LLC  
HawaiianBeachfront.com  
**808-295-0704**

## FOR RENT

**OFFICE SPACE FOR LEASE**  
Haleiwa Town Center  
wschoettle@gmail.com  
**808-637-8000**

## MISCELLANEOUS

**3Rs School Recycling Drive Kahuku High & Intermediate School 56-490 Kam Hwy Kahuku Saturday, November 23, 9-11am**  
Scrap metals, electronics, document shredding ( 2 bxs per car), household goods and recyclables

**The Purple Van**  
Food distribution program delivers food boxes weekly.  
Volunteers wanted.  
808-638-9627

**Drug Problem? Call Narcotics Anonymous 808-734-4357**  
Meeting 7pm Mondays  
Cottage 2 behind Waiialua Community Asso.  
66-434 Kam Hwy Haleiwa

**TAI CHI CLASSES**  
Waiialua Rec Center  
Mon & Weds 9:30-11:00am  
Sunset Beach Elem Pavilion  
Tues 9:30-11:00am

**Aloha, the Sunset Beach Recreation Center is looking for volunteers** to instruct classes at Sunset Beach Rec Ctr or Sunset Beach Park. Volunteer instructor may teach a variety of classes: tai chi, tennis, yoga, ukulele, hula etc.  
For more info call 808-638-7213

  
**HISTORICAL TOURS**  
Walking tours of historic Hale'iwa and Waiialua Towns by local historian  
\$20 by appointment  
808-342-8557  
info@WaiialuaHistoricalSociety.org

**Coconut Rhinoceros Beetle response:**  
for info visit hdoa.hawaii.gov/pi/main/crb/  
email: BeetleBustersHi@gmail.com  
phone: (808)643-7378  
call or text: (808)678-5244

**Hawai'i Statewide Marine Animal Stranding, Entanglement, and Reporting Hotline**  
*Includes stranded/injured sea turtles, monk seals, dolphins, and whales.*  
**Phone: (888) 256-9840**

**GOT TURKEY?**  
North Shore News and NS Food Bank is collecting frozen turkeys and donations for our Community Thanksgiving Day Celebration. Drop off frozen turkeys at:  
**WCA (Hale'iwa Gym), Saturday, November 23, 8am - 1pm**  
For info call 808-780-8037

**Random Thought**  
"No one has become poor by giving."  
- Anne Frank

**KQNS 107.3 Christian Radio**  
Inspirational, Health, Music, Addictions, Marriage, Prophecy, Stories, etc...

**NORTH SHORE SERVICE CENTER**  
**2nd Wednesday Every Month 10am-1pm**  
**Wed, December 11**  
At the WCA (Hale'iwa gym)  
Please join us, ALL are welcome!  
Assistance in housing, food, health and fellowship by: IHS, NS Food Bank, Ko'olauloa Health Center, River of Life Mission, Education for Homeless Children and Youth, Kealahou West-Oahu, Narcotics Anonymous, SNAP, Legal Aid, Premier Benefits (Medicare), Ke Ola Mamo, and more...For more info or to join us as a provider, call Linda at 808-780-8037

North Shore Food Bank  
IG @nsfoodbank


  
 FRIENDS OF SUNSET BEACH
   
 NORTH SHORE OAHU
   
 PRESENTS

GET  
 YOUR  
 TICKETS
 
  
[FRIENDSOFUNSETBEACH.ORG](https://FRIENDSOFUNSETBEACH.ORG)

# *Celebrating the Arts!*



**FEATURED ARTIST - DANIELLE  
 ZIRKELBACH**  
**@DANIELLE.ZIRK**

---

**SATURDAY, DECEMBER  
 7TH, 2024**

**5:30-10PM**

WAIMEA VALLEY PIKAKE  
 PAVILION

---

**FEATURING**

LIVE & SILENT AUCTION &  
 SPECIAL MUSICAL GUESTS

---

**PRESALE TICKETS: \$105**  
**DAY OF: \$120**

INCLUDES HEAVY PUPUS | ADULTS  
 ONLY