



"E Ala Na Moku Kai Liloloa"

Happy Holidays!
Featured In This Issue:

North Shore Chamber of Commerce
News
Page 2

Community Christmas Traditions
Page 12

Pupukea Bike Path in Peril
Page 14



NORTH SHORE NEWS December 18, 2024 VOLUME 41, NUMBER 13



Councilmember Matt Weyer, Council Chair Tommy Waters, Mayor Rick Blangiardi and Councilmember Tyler Dos Santos-Tam kick off the Christmas parade season at Kapolei Hale.

Happy Holidays to the North Shore Community!

By Councilmember Matt Weyer

Mahalo to everyone who came out to the 2024 Hale'iwa Christmas parade! It was great to walk alongside the Royal Hawaiian Band and join the community in ringing in the holiday season. Mahalo to the North Shore Chamber of Commerce for organizing another fun parade!

For more holiday fun, enjoy the festive spirit this season at Kapolei

City Lights, now open at Kapolei Hale. This year's theme, "Show Aloha This Holiday Season," will be on display through Sunday, January 5, 2025. Hours are Monday through Thursday, 7:30 a.m. to 8 p.m., and Friday through Sunday and holidays, 10 a.m. to 10 p.m. Honolulu City Lights is also marking its 40th Anniversary! Decorations at Honolulu Hale will be up

throughout December, with daily viewing hours from 6 p.m. until dawn.

December is a time for gratitude, connection, and unity. May your season be filled with joy, ono meals, and cherished moments with 'ohana and friends. Please remember to celebrate safely this month. Wishing you and your loved ones a safe and joyful holiday season!



North Shore Chamber of Commerce News

A Season of Gratitude and Recognition at Waimea Falls Park

On December 12, the North Shore Chamber of Commerce hosted its annual Christmas Party and Community Awards Banquet at Waimea Falls Park. The evening brought together neighbors, educators, farmers, business owners, nonprofit leaders, and public servants in a heartfelt celebration of the values and achievements that define the North Shore. Amid the twinkle of festive lights, the fragrance of native flora, and Hawaiian music, guests gathered to honor individuals and organizations that have enriched the community.

This year's awards recognized a remarkable range of contributions. Through sustainability, cultural preservation, public service, hospitality, education, and agriculture, the honorees have worked tirelessly to ensure the North Shore remains a thriving, harmonious place to live. From building new models of environmental education to preserving ancient traditions, each awardee inspires hope, gratitude, and unity.

North Shore Kama'āina of the Year: Kim Johnson

Kim Johnson, has profoundly influenced how Hawai'i's keiki connect with the land. Through her leadership of the Kōkua Foundation and the Johnson Family Foundation, Kim has guided thousands of schoolchildren toward understanding sustainable agriculture. Her efforts extend far beyond the islands, inspiring a worldwide audience to care for the Earth.

Non-Profit Organization of the Year: Manu o ke Kai Canoe Club

Manu o ke Kai Canoe Club, founded in 1984, stands as a guardian of Hawaiian cultural traditions. For four decades, this nonprofit has nurtured outrigger canoe paddling, teaching the values of kuleana, aloha, and respect for the ocean. With participants ranging from children to elders, the club has excelled in international competitions while ensuring that future generations understand the cultural significance of paddling.

Public Servant of the Year: Terry Ahūe

Terry Ahūe's pioneering work in ocean safety set a global standard with the Jet Ski Rescue Program. His innovation revolutionized lifeguard practices, enabling faster responses in crowded surf zones and saving countless lives. Decades of dedicated service have made Terry a respected figure in ocean safety.

Business of the Year: Haleiwa Joe's

Haleiwa Joe's has become a gathering place known for excellent cuisine and warm hospitality. Beyond culinary expertise, the restaurant has supported local groups by hosting community meetings and participating in charitable events.

Teacher of the Year: Coach Gary Wirtz

At Waialua High School, Coach Gary Wirtz has used football to teach life lessons of discipline, teamwork, and perseverance. As much a mentor as a coach, Gary encourages academic achievement and personal growth, shaping student-athletes who carry these values beyond the field. His award celebrates the profound impact of educators who inspire youths to become responsible, community-minded adults.

Farmer of the Year: Mohala Farms

Mohala Farms exemplifies sustainable agriculture, growing diverse organic produce that nourishes the community and protects the land. Their regenerative practices influence how local markets, restaurants, and families access nutritious, locally sourced food.

A Night of Unity and Purpose

As festivities continued in beautiful Waimea Valley, guests lingered to share stories, make new connections, and look toward the future. The evening's honorees reminded everyone that true community strength arises when individuals, organizations, and businesses come together, guided by respect, responsibility, and aloha. It was a fitting close to another year on the North Shore—one marked by generosity, innovation, and hope.



North Shore Chamber of Commerce Christmas Tree Lighting with Santa at the North Shore Marketplace

GIVE THE GIFT OF WAIMEA VALLEY

Visit the Gift Shop or call 808-638-7766 • Hurry! Holiday specials end December 24

Kama'āina Annual Passes

- ~~\$40~~ **\$20** Individual
- ~~\$80~~ **\$40** Family
- ~~\$800~~ **\$500** Lifetime

Passholder benefits include:

- 1 free guest pass per day
- Complimentary Moon Walk pass; your choice of 1 date in 2025
- 10% off at the Gift Shop and Wahi 'Aina Snack Bar

Kama'āina Holiday Passes

HOLIDAY PASS
Valid 12/26/24 - 12/1/25
May not be used with any other promotions or discounts.
(808) 638-7766
WAIMEAVALLEY.NET

\$5 per pass or 5 passes for \$20! All passes valid for 1 single-day admission through December 2025

Holiday Plant Sale

Enjoy 20% off at our weekly plant sale throughout December! Saturdays at the nursery, 8 AM - 12 PM



DECEMBER ONLY: OPEN 7 DAYS, 9 AM - 4 PM
Closed Christmas Day

CALL: (808) 638-7766

@WAIMEAVALLEY  

@WAIMEAVALLEYOAHU 

WHERE HAWAI'I COMES ALIVE

WAIMEAVALLEY.NET



**Representative
Amy
Perruso
Serving You in District 46**

Building a People's Budget for Hawai'i: Honoring the Legacy of Waialua and Mokulē'ia

As we wrap up our People's Budget series, I am inspired by the deep engagement and shared purpose of our community. In Waialua, Mokulē'ia, and the broader HD 46 district, we have been coming together in community meetings and listening sessions over the past six months to craft a legislative agenda rooted in the values of resilience, justice, and sustainability. Our district's history as a vital agricultural hub and our enduring commitment to community care provide a strong foundation for this work.

In a community that has long depended on agriculture, protecting land is a top priority. That's why our agenda includes measures to block foreign and corporate ownership of agricultural land, ensuring that Hawai'i's lands remain in local hands. This, along with a strong "land gains" conveyance tax on agricultural lands, will discourage speculative development and preserve agricultural integrity. We are also introducing legislation to prevent dangerous pesticide drift around homes, schools and hospitals, and a bill that will strengthen our previous work on healthy soils.

Our community's call for sustainability is loud and clear. Making sure that renewable energy projects like solar farms, water catchment systems, cesspool conversion and rooftop solar for vehicles align with our communities' plans is critical for local empowerment. Equally vital is protecting food security by investing in farm-to-school programs, local agriculture, food safety training for farmers and apprenticeships for regenerative farming practices.

In our district, the land has long provided, and restoring that connection—through watershed restoration, shoreline protection and support for community food production—echoes our shared values. As one participant put it, "We already know how to feed ourselves. We just need to invest in it."

The rising cost of living is pushing kama'āina out of their homes. Affordable housing must be a priority, with creative solutions like kauhale (community villages) and policies to protect local families from displacement, like a property tax surcharge on luxury non-owner occupied residences and reasonable protections against rent gouging, will help us house our local families.

Our community is still experiencing the challenges of economic transition. Investing in the P-20 education pipeline, including our workforce development pipelines, supporting small businesses, centering local food production for local consumption, and investing

in green jobs reflect our desire to build a self-sufficient future while staying rooted in the values of our past.

Reintroducing SB301 from 2019, which subjects Real Estate Investment Trusts (REITs) to full taxation, along with increasing corporate taxes, changing the state estate tax exclusion and modifying recent income tax legislation to provide more equity will also generate critical revenue for public services, better support for our public workers, and more capacity for enforcement and implementation of existing law.

Education remains central to economic justice. Initiatives like universal free school meals, public pre-school, wraparound community school support and more attention to civic literacy will empower every child, while shifting to authentic assessment practices will help us honor the great diversity of strengths in our young people. These investments honor our schools' role as gathering spaces and the foundation of our future.

Caring for one another has always defined our community. Your calls for affordable childcare, expanded mental health services, and integrated health-care reflect this ethos. Strengthening child welfare services—through better staffing, independent oversight, and trauma-informed care—is a clear priority for protecting our keiki and supporting their families. Equally important is ensuring our kūpuna are cared for, with food security programs and accessible home care. These initiatives honor the generations that built our communities and inspire us to provide for the next.

We are still collecting input and recommendations on the most important and urgent investments we can make for our community – please go to this link to share your mana'o: <https://tinyurl.com/HIBudgetPriorities>

The People's Budget isn't just about numbers—it's about building a future that honors our history and embraces our shared values. Thank you for trusting me to carry your voices into the legislative process. Together, we are creating a Hawai'i where every family can thrive, now and for generations to come.

Mahalo nui loa for your engagement, ideas, and aloha. Let's move forward with the same spirit of connection and care that has defined us for so long.

Waialua Community Association 2025 Membership Drive

The Waialua Community Association is currently accepting new and renewing membership applications for the year 2025. Individual membership fee is \$10/year. Application forms can be downloaded at waialuacommunityassociation.org or picked up at our office at 66-434

Kamehameha Hwy., Haleiwa. You can also request an application via email wca66434@gmail.com. For those wishing to participate as voting members at our annual membership meeting on February 19, 2025, please make sure your application is received by January 15, 2025. To learn more about the WCA, please visit our website. Mahalo for your support.

Thank You Hawai'i

Merry Christmas
From our Family to Yours

As we embrace the holiday season, let's celebrate the many blessings that make our community strong and vibrant. This is a time to reflect on the good in the world, and to look forward with hope and optimism for the year ahead. From all of us, our warmest aloha, a very Merry Christmas and a New Year filled with hope, peace, and prosperity.

HAPPY HOLIDAYS
from your hometown
Paalaa Kai Bakery

www.pkbsweets.com

MEXICAN RESTAURANT & BAR

HAPPY HOUR EVERYDAY 3-6PM
JORGESHLEIWA.COM

YOU ARE INVITED TO



CHRISTMAS

AT THE
HUKILAU MARKETPLACE

DECEMBER
| 16TH - 21ST |

6:00 - 8:00 PM

 JOIN IN ON THE FESTIVE FUN 

WITH SANTA, LIGHTS, TRAIN RIDE, GIVEAWAYS,
SCAVENGER HUNT & LIVE ENTERTAINMENT! PLUS, IT'S FREE!

FOR DETAILS, CALL 808-369-4171 OR VISIT HUKILAUMARKETPLACE.COM



**\$49.95 DINNER & SHOW
BACK BY POPULAR DEMAND!**

Must be an Ohana Club member with valid Hawai'i ID. Based on space availability. Offer expires 12/31/24.





MELE KALIKIMAKA

Wishing You and Your 'Ohana a Happy Holiday Season filled with Extraordinary Moments & Warm Aloha.

FROM THE RITZ-CARLTON O'AHU, TURTLE BAY AND THE TURTLE BAY FOUNDATION




Mele Kalikimaka & Hau'oli Makahiki Hou

Our menu is available online at:
9thislandvegan.com

"You don't have to be vegan to eat here, it's just that good." We specialize in homemade food. Breakfast, lunch and more...

66-437 Kamehameha Hwy #104 Haleiwa HI
 (next to the Haleiwa Post Office)
808-367-1653
 10am - 4pm Closed Thursday



SAVE THIS HOLIDAY SEASON

PAALAA KAI SuperSaver Special

Purchase 6 Bear Claws and get....

GET 15% OFF A DOZEN SNOW PUFFIES

This offer is valid from Dec 11 - 24, 2024. Cannot be combined with other promos, offers, or daBest VIP discount.

Visit us online
www.pkbsweets.com



Councilmember
Matt Weyer
Serving You in District 2

Aloha North Shore Community!

As we approach the end of the year, I want to take a moment to reflect on our community's achievements throughout Council District 2. Your voices have been key in shaping our policies and initiatives this year, and I am grateful for your ongoing engagement and support. Looking ahead, let's continue to work together to create a brighter future for our diverse district. My office and I look forward to connecting with you at various community and holiday events as we end the year.

DMV Kiosks

The Department of Customer Services is excited to announce a new milestone for the North Shore community. After years of research and engagement, the city secured approval to install a service kiosk in partnership with a local grocery store chain, with plans to have it operational by the first quarter of 2025. This achievement marks a breakthrough following prior challenges in finding the necessary support and meeting logistical requirements. We look forward to providing this much-needed resource to enhance convenience and accessibility for residents.

Kahuku Police Station Security Cameras

The Department of Design and Construction (DDC) is installing new security cameras at the Kahuku Police Station and integrating them with existing control systems. This project, with a budget of over \$348,000, is expected to be completed by the end of 2024.

Anahulu (Rainbow) Bridge Rehabilitation

Repair and rehabilitation work is ongoing for the historic Anahulu (Rainbow) Bridge. Spanning 170 feet, this double-arch concrete structure is undergoing concrete spalling repairs by the Department of Design and Construction (DDC) to prevent corrosion and extend its service life. The project, with a budget exceeding \$3 million, is anticipated to be completed in 2025.

Policy Updates

As a reminder, bills require three readings at a full Council meeting to be passed and sent to the Mayor for signing into law.

Bill 22 (2024), relating to legalizing certain fireworks. Mayor Rick Blangiardi vetoed the bill for safety reasons and to align with HFD's testimony against the measure. I voted against passing this measure in October's full Council meeting. In November, the Council considered an override but ultimately decided against it, heeding concerns shared by many residents about the measure's potential impacts.

Bill 64 (2023), a continuation of what was previously Bill 10 (2022), this bill reviews and updates the City's Land Use Ordinance (LUO). Councilmember Esther Kia'aina, chair of the Planning & Economy Committee, has guided discussions through various land uses, including industrial, commercial, residential, agricultural, and public, civic, and institutional. After much hard work, Bill 64 will be up for its third (and final) reading at the Dec. 11 full Council meeting.

Bill 59 (2023), relating to tax incentives for film studio facilities, was reported out for passage on third reading by the Budget Committee in November. Mahalo to everyone who worked hard to refine this bill, and mahalo to all the testifiers who have been tracking this legislation and diligently showing up in person and online to share their stories and how this bill will impact their lives. Bill 59 will also provide opportunities for job growth on O'ahu and will help kama'aina who want to get involved in the film industry. Our office has worked hard to ensure that the bill contains protections for local workers throughout the construction, operation, and repair and maintenance phases of this film studio project. Bill 59 will be up for third reading at the Dec. 11 full Council meeting.

Bill 59 (2024), relating to single-use plastic containers at City facilities and events. Chair Tommy Waters and I introduced Bill 59 to address plastic waste issues. The bill targets containers under one liter, which are common in street litter and ocean pollution, and harmful to wildlife. Given Hawaii's low recovery rates for plastic bottles, this measure encourages alternatives like aluminum or glass. This initiative was inspired by a sixth-grade class researching ocean acidification and advocating for environmental action. The bill was reported out for passage on second reading by the Housing, Sustainability, and Health Committee in November.

Bill 61 (2024), a push to promote public safety for motorists and pedestrians. Councilmember Radiant Cordero and I introduced Bill 61 to prohibit wheelies on public roadways by certain motorized vehicles, including mopeds, motorcycles, and electric bicycles. Wheelies, defined as a stunt in which a rider lifts the front wheel and balances on the back wheels, pose a growing safety risk as e-bike use increases in our community. Honolulu Emergency Medical Services is presently reporting around two e-bike accidents per week, underscoring the need for preventive action.

Mahalo for staying connected with us at the Council. I hope your December is filled with gratitude and meaningful connections.

In a world where you can shop anywhere...





Ask the Doctor

Nash Witten, MD

Dear Doctor, "I'm feeling stressed this holiday season. Do you have any recommendations for how to deal with all this stress?"

Family medicine physicians train to care for patients throughout their lifespan, including mental health concerns like stress. Although some patients think of physicians as "pill pushers," in fact, most times, medications aren't the first-line treatment for a condition!

When it comes to stress, whether from the holidays or usual work/life events, I often ask patients how they are sleeping. Good sleep is critical to functioning well during the day, including dealing with stress. The amount of sleep we each need depends on age and personal preference, but studies show that adults over 18 need at least seven hours of sleep per night. If you have a wearable smart device like an Apple or Garmin watch, it will provide you with a report of how well you slept the prior night. I have one of these devices, and it's interesting to see how things referred to as "sleep hygiene" affect how good my sleep is. Sleep hygiene focuses on a consistent sleep schedule; creating a quiet, dark, and calm environment to sleep in; avoiding alcohol, nicotine, and caffeine at least four to six hours before bed; regular exercise but not within at least two hours of bed; and creating a bedtime routine, among other things.

If you need immediate help this holiday season, call or text 988 to get help with crisis, mental health, or substance abuse. The website hawaii.gov also has Hawai'i-specific resources and even allows you to chat with the 988 staff! If you are looking for additional mental health resources, such as a therapist or even medication management of your stress, we can help connect you to community resources and even with medications, if needed.


Dr. Nash Witten is a Board Certified Family Medicine physician at the Queen's Health Care Centers Haleiwa, located at 66-125 Kamehameha Hwy., Haleiwa, HI 96712. The clinic is accepting new patients, call 808-691-8501 to schedule an appointment. Submit questions to the doctors at nsnaskthedoctor@gmail.com.



New Pupukea Bike Path on its way! North Shore Outdoor Circle's Rex Dubiel Shanahan is working with Consulting Arborist, Carol Kwan to assess the trees along the existing path. Also assisting is Lindsey Nakashima and Michelle Manuel of Bowers and Kubota Engineering firm, and Oryn Nakamura, City Bike Engineer.

Keeping the North Shore Clean, Green and Beautiful

Follow us on Facebook

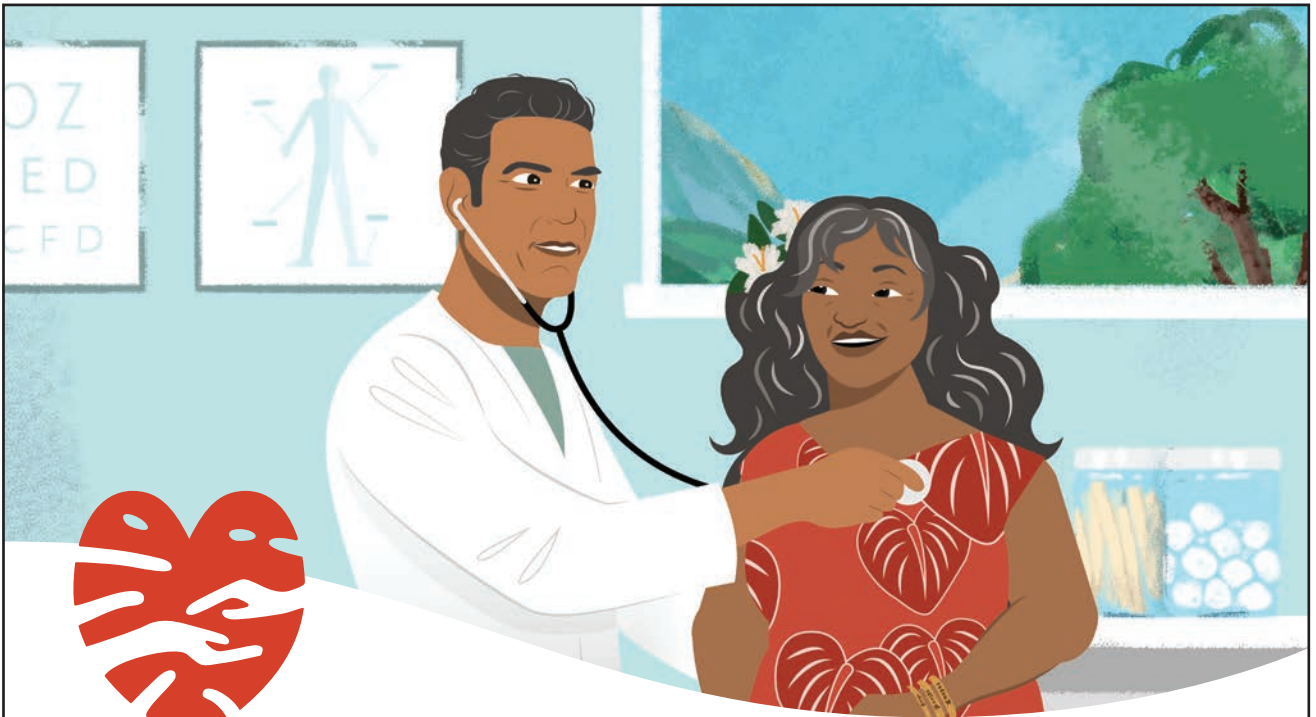


THE OUTDOOR CIRCLE

Since 1912

Merry Christmas

From The North Shore Branch



MEDICARE MEMBER BENEFITS THAT PUT YOU FIRST.

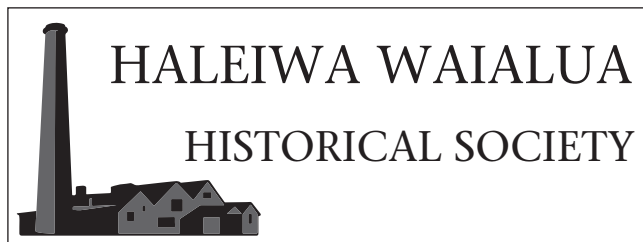
- Pre-Paid Flex Card to help pay for food, utilities and more
- Vision care and glasses
- Preventive dental, crowns and dentures
- Hearing aids and more

LEARN MORE Discover.AlohaCare.org

1 (877) 812-0249 (toll-free) | TTY/TDD: 1 (877) 447-5990

30 ALOHACARE
Thirty Years of Healthcare with Aloha





Community Christmas Traditions

By Boyd Ready, Local Historian

We are so accustomed to having a Hale'iwa Town Christmas parade we forget that it wasn't always that way. Until the Waiialua Sugar plantation started closing, they sponsored and presented the Christmas parade and program in Waiialua every year. After 1996 people don't remember a parade until 2001 when the City and Hale'iwa Main Street sponsored a Christmas parade and ho'olaule'a to help restart business after the 9-11 attack interrupted tourist flights.

What was the Christmas parade like in Waiialua plantation days? A red sleigh mounted on a flatbed carried jolly, white-bearded Adam Holmberg as Santa, tossing candy to children alongside the streets. He was accompanied by the Waiialua High School band in a truck playing Christmas songs. The festive little caravan roamed the streets of Mill Camp, Skilled Camp, Kukea Circle, and Haleiwa Road, with kids and parents gathered to enjoy the sight and collect candy. Julie Patacchia remembers people calling out "It's the Manager!" as Santa went by. After the parade, the red sleigh would be part of a Christmas display in the Waiialua Plantation Park.

For the Christmas program, all the school children and high school kids from Waiialua and their families would gather in the old wooden recreation center gym (where the current Rec Center is) to sing carols led by Mr. Gordon Virgo. St. Michaels Catholic Church provided the Nativity Scene. The Plantation and ILWU co-sponsored a paper bag with an apple, orange, and hard candy in it for every child at the end of the program. The Plantation also went to each employee's home and gave every child a new toy such as a doll, Mr. Potato Head, or puzzle. Photos with Santa were provided by Mr. Miura, who ran the photography studio on Puuiki Street in Mill Camp. He would go to each plantation home with a jolly Portuguese Santa and take photos of the kids with Santa for a fee.

The revived Christmas parade in 2001 started at Weed Circle, with the dedication of the Weed Circle Beautification Project sponsored by Hale'iwa Main Street and North Shore Outdoor Circle. Mayor Harris and his department heads, who helped organize the ho'olaule'a, were present. Bob Leinau, of Waimea Falls Park, appeared on a big flatbed truck as 'Planta-Claus' with a Spanish moss beard. Soon his actual long white beard made him the inevitable Santa every year at the Hale'iwa Town Christmas parade until this year. And the Santa photo tradition was

revived with Santa Bob holding court at the Haleiwa Marketplace for 'Photos with Santa.' In its 24th year now, the Grand Marshall honoree, horses, politicians, beauty queens, classic cars, and creative floats make quite a parade, a favorite of the community!

Mahalo to Norm Fujioka, Carol Ishimoto, Antya Miller, Gloria Nahinu, and Julie Patacchia for the memories. waiialuahistoricalsociety.org



Santa bringing Good Cheer and Christmas Tidings to the Plantation workers and their families Painting by Julie Patacchia



The first Hale'iwa Town Christmas Parade: L-R: Antya Miller, parade coordinator for 19 years, Lōkahi Herrod, soccer team coach, Noriko Matsumoto, soccer mom with team and in back: Waiialua High School band and others. Photo Trish Coder

Waiialua Bandstand
Presents

Royal Hawaiian Band

Sunday, January 5, 4pm

Bring your lawn chairs and enjoy the show!



GIVE THE GIFT THAT KEEPS ON GIVING THIS SEASON!

Through the season of celebration, we invite you to help us continue making a positive impact! Support our local farmers and businesses by shopping at the **Kōkua General Store** and **'ĀINA Farm Stand**, become a peer-to-peer supporter or consider making a donation to Kōkua Hawai'i Foundation's **End-of-Year Campaign** to amplify our hands-on environmental education programs, connecting keiki with our land, water, and food systems. **The top peer-to-peer supporter will win 2 tickets to the next Farm to Table Dinner in February!**

VISIT OUR HALE'IWA HOME



HOLIDAY HOURS

Open everyday December 17 - 23!

12/17 - 12/23	10AM - 5PM
12/24 - 12/25	CLOSED
12/26 - 12/28	10AM - 3PM
12/29 - 1/1	CLOSED

Regular Hours Resume on 1/2/25

The **Kōkua General Store** is your destination for bulk, refill, and low-waste products, empowering our community to reduce waste. This holiday, support eco-friendly businesses by shopping with purpose or get a gift that will create lasting impact by gifting a KHF Membership! Receive a complimentary gift when gifting or renewing a KHF Membership in store!



OPENING HOURS

MONDAY	CLOSED
TUESDAY	CLOSED
WEDNESDAY	9AM - 3PM
THURSDAY	9AM - 3PM
FRIDAY	9AM - 3PM
SATURDAY	8:30AM - 2:30PM
SUNDAY	CLOSED

The **'ĀINA Farm Stand** carries fresh produce, meats, seafood, value-added products, fresh coffee, and daily cafe items all sourced from from local farmers, food producers, and businesses in Hawai'i. We also carry seasonal flowers & lei to honor what this space once was, the old Hale'iwa Flower Shop! Visit us and follow the @ainafarmstand on socials to get the latest information.

HELP US REACH OUR END OF YEAR GOAL!



GIFT A KŌKUA HAWAII FOUNDATION MEMBERSHIP



Merry Christmas & Happy New Year!
Wishing You a Warm & Safe Holiday Season from
STERMAN REALTY

Richard D. Sterman (R)(PB)

Zander deMurias (R)
 Beatnik A. Cross (R)
 Cathryn L. Shanley (R)
 Christopher Beck (R)
 Cynthia Crown (R)
 David J. Sterman (R)
 David Starr (R)
 Dicle Roberts (R)
 Donald Rodgers (R)
 Gregory Gerstenberger (R)
 Janell Chun (R)
 Jim Gayle (R)
 Kristin Crowe (R)

Lora Healey (R)
 Marcello Del Zotto (R)
 Marisa Griffin (R)
 Mark Viqueira (R)
 Matthew Urban (R)
 Monta Koch (R)
 Nicole Carter-Zimmer (R)
 Pete Johnson (R)
 Sandra A. Martin (R)
 Sean Lum (R)
 Sean McGonigle (R)
 Caroline Torres-Office Manager
 Dru Bjorn-Bookkeeper



66-250 KAMEHAMEHA HWY., D-100 HALEIWA, HI 96712
 WWW.STERMANREALTY.COM
 808-637-6200

Pupukea Bike Path in Peril

By Rick Lantz

Community and residents are being asked to help stop the spread of the Coconut Rhinoceros Beetle (CRB) along the Pupukea bike path. The shade and greenery that many path users enjoy is at risk of being decimated. The spread of the CRB has infiltrated the North Shore and we have lost a significant amount of palms and trees and will continue to lose more unless our community takes action to stop the spread.

The spread of the CRB is through the larvae that hatch and develop in decomposing Green Waste and mulch piles, particularly Palm Fronds Green Waste piles. The bike path has become a convenient place for nearby residents to dispose of their cuttings, primarily palm fronds. There are multiple piles that line the bike path.

This problem is partly due to the lack of designated green waste pickup days and barrels for the residents living along the path on Ke Nui, Ke Ike, and Ke Waena Roads. These streets are very narrow requiring the refuse collectors to use a smaller truck with attendants manually dumping smaller barrels. However, according to Environmental Services/Refuse Collection management, Green Waste will still be picked up on these streets on collection day provided it is cut up and placed in barrels. They will not pick up green waste piled on the ground. There is NO LIMIT on the number of barrels you can put

out for collection.

The City has been asked several times to facilitate the removal of the Green Waste, but they do not have the personnel to remove existing Green Waste. The City has only one maintenance worker available for keeping the bike path safely trimmed and cleaned.

What can you do to stop the CRB spread along the bike path and neighborhoods?

Be Responsible for your Green Waste - put it in barrels or haul to dump, organize a party, clean up and haul away and haul away existing piles along the path. Educate yourself on the CRB at crbhawaii.org

Laie Dump open everyday until 6pm, Kawaioloa dump only Sunday 12-6p



Green Waste pile on the bike path

North Shore Spotlight: Betty Depolito "Banzai Betty"

By Noah Grodzin

Betty Depolito aka "Banzai Betty" has been a North Shore fixture since the late 1970's as either a surfing contestant, an advocate for women's surfing, a media person covering surfers or all these things at the same time and more.

The North Shore community means everything to Betty and she considers living here to be an ongoing exciting artistic adventure of a lifetime.

Betty first came to the North Shore from California to compete in the Sunset Pro as the top rated surfer in WISA, the Women's International Surfing Association. She placed 3rd in ten foot Sunset and never left.

In between then and now Betty obtained a degree in television production from Leeward Community College and launched a media career, including working with ESPN, H3O TV, and NBC Honolulu. When she first started at NBC there was no women's surfing being reported and she set out to change that by submitting videos, writing and producing stories about women's surfing.

Betty cast her focus on promoting Women's surfing in 1989, organizing the first Women's Surf event at Pipeline in 1990. She realized the Women had a long way to go for equality and that stuck with her for years. She organized junior events at Kewalo Basin and eventually big wave events at Waimea Bay and the outer reefs. Betty is a staunch advocate to this day working to change the rules for surf event permits so they don't hamper women's surfing participation. She has helped write legislation with the City Council to move women's surfing forward and continues to be outspoken about women's rights in sports.

Betty produced the first ever women's "surf show" first on the cable network Ocean Sports named "Undercurrents" and later on Spectrum called "FIHi Girls Surfing and Sports" the name inspired by the "fly girl" a woman who is strong, independent, and daring. That show continues now after 14 years on air.

Betty keeps up a water sports column for the North Shore News, volunteers for the North Shore Chamber of Commerce and keeps her 40 year Surf Reporting going for Surf News Network as "Banzai Betty". She runs a video and photo business as Banzai Enterprises specializing in action and family photos. Over the years many big strides have been made towards growing the support of Women's Surfing and you can see it reflected by more women surfing big waves and more women surfing pipe and riding barrels.

Looking back Betty recalls how she could see the progress over the years by watching the women go from using old beat up boards to new fresh sponsored boards. Ultimately Women's Surfing still has a ways

to go to catch up to the Men's tour and Women still don't have a true voice in the sport. They need people to help speak up for them in hopes of molding the future into what they want it to be. Betty is one of many voices that continues to help push these efforts along. Betty best reflects some of the true values of Hawaii and the North Shore in her selflessness, and her values of community, and spirit. Find her at @banzaibetty and her photos at <https://bettyadepolitophotography.zenfoliosite.com> Mahalo Betty for all you have done!



Banzai Betty at Pipe

¡Feliz Año Nuevo!



**The entire Cholo's staff
would like to thank you
for your continued support
and we wish you a happy,
healthy and prosperous
New Year!**



www.CHOLOSMEXICAN.com



@Banzaibetty Press

HALEIWA ROSE TO THE CONTEST OCCASION

The HIC Hawaiian Islands Haleiwa Pro goes down in the books as one of the best events ever. Haleiwa showed its teeth for the four days of surfing which included a longboard contest this time around. The longboard event kicked off the waiting period with great 4-5 foot solid surf. Former World Champion Kai Sallas was very consistent winning every heat and winning top honors with excellent wave selection and long nose rides. Another iconic win for Hawaii's Champion surfer. In the wahine division it was rookie Sive Jarrard taking top honors and qualifying to go on the world tour. Jarrard surfs for Samoa along with her sister Lucy they have been making great strides in the competitive arena. "I can't believe this happened" said Siva after the event. "I just want to thank my family for always supporting me. I was a little surprised just after my first heat. I was a little all over the place and trying to figure it out. I think I just really connected with the ocean and it felt good." She definitely had Haleiwa wired and snagged open faced waves all through the final heat, topping young Cash Hoover who ended up in second place.

The shortboard event started in heavier surf, in the eight foot range on the sets. Haleiwa is no snooze to surf. It's challenging even seeing the sets coming and the current takes you north in a flash. Battles were on and in the end two surfers who had not won for a while took the trophies home. In the men's match-up final it was a battle. Consistent waves poured in and high scores prevailed with Joshua Moniz taking the win over 2nd place Shion Crawford at 16.20. Moniz racked up a 9.2 ride to seal the deal (17.55) over an intense field of some of the best surfers in Hawaii. Finn McGill and Imaikalani deVault placed 3rd and 4th after some of the best and most consistent surfing ever. It was an incredible display of local surfing! In the Women's division it is different. The final saw 3 top CT surfers battling it out but it was Zoe McDougall from Sunset Beach who found the best waves to take the win over Haleiwa local surfer Bettylou Sakura Johnson. The scores were very tight. Zoe with 15.70 and Johnson 15.15. "I just decided to go and catch the bombs", said McDougall. "It's so awesome to have a win at the place I literally learned how to surf and the first place I ever competed... and it feels great to take a win at home in firing waves." It was a great win for McDougall who has proven she is one of the

best surfers on the seven mile miracle! She and many of our top athletes get set and ready for the Pipeline Masters starting Dec 8th-20th.

The Hawaiian Islands HIC Haleiwa Pro Longboard Women's Final Results:

- 1 - Sive Jarrard (ASM) 14.00
- 2 - Cash Hoover (USA) 10.70
- 3 - Luluhia Blomfield Kane (HAW) 10.70
- 4 - Sophia Culhane (HAW) 7.75

The Hawaiian Islands HIC Haleiwa Pro Longboard Men's Final Results:

- 1 - Kai Sallas (HAW) 17.65
- 2 - Nelson III Ahina (HAW) 14.70
- 3 - Scotty Fong Jr (HAW) 12.50
- 4 - John Michael Van Hohenstein (HAW) 12.10

The Hawaiian Islands HIC Haleiwa Pro Women's Final Results:

- 1 - Zoe McDougall (HAW) 15.70
- 2 - Bettylou Sakura Johnson (HAW) 15.15
- 3 - Alyssa Spencer (USA) 14.35
- 4 - Luana Silva (BRA) 14.05

The Hawaiian Islands HIC Haleiwa Pro Men's Final Results:

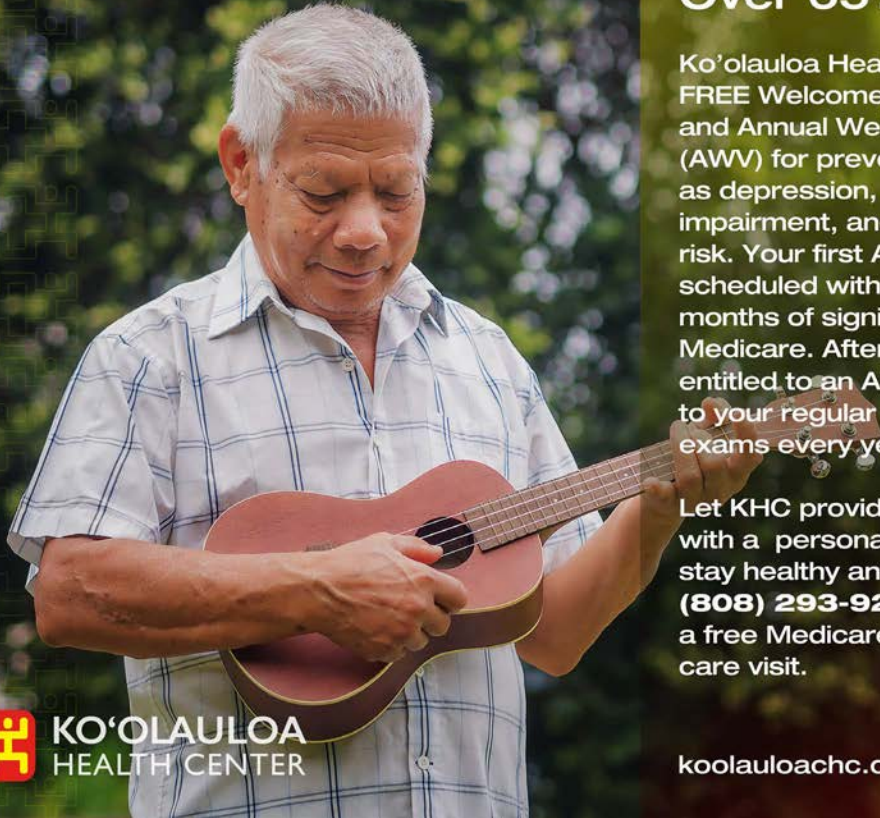
- 1 - Joshua Moniz (HAW) 17.55
- 2 - Shion Crawford (HAW) 16.20
- 3 - Finn McGill (HAW) 15.10
- 4 - Imaikalani deVault (HAW) 14.95



Joshua Moniz, Haleiwa

Photo: <https://bettyadepolitophotography.zenfoliosite.com/>

Our Kūpuna



KO'OLAULOA
HEALTH CENTER

Over 65?

Ko'olauloa Health Center offers FREE Welcome to Medicare and Annual Wellness Visits (AWV) for preventive care such as depression, cognitive impairment, and assessing fall risk. Your first AWV can be scheduled within the first 12 months of signing up for Medicare. After that, you're entitled to an AWV in addition to your regular annual physical exams every year.

Let KHC provide your Kūpuna with a personalized plan to stay healthy and well by calling **(808) 293-9231** to schedule a free Medicare preventive care visit.

koolauloachc.org

FEED TROUGH LLP.

67-292 Goodale Ave.
Waialua shopping center.
(808)637-5600



Come on down for all your pet needs

-Specialty Dog & Cat Food

(including Acana, Avoderm, Natural Balance)
(Orijen, Propac, Red Flannel, Science Diet, and Solid Gold)

-Horse, Chicken, Duck, Bird

Rabbit, Guinea Pig Feed

-Treats and Supplies

U+HAUL®

AUTHORIZED DEALER

Accepting Oahu SPCA donations until Christmas

*Smile
God Loves You!*

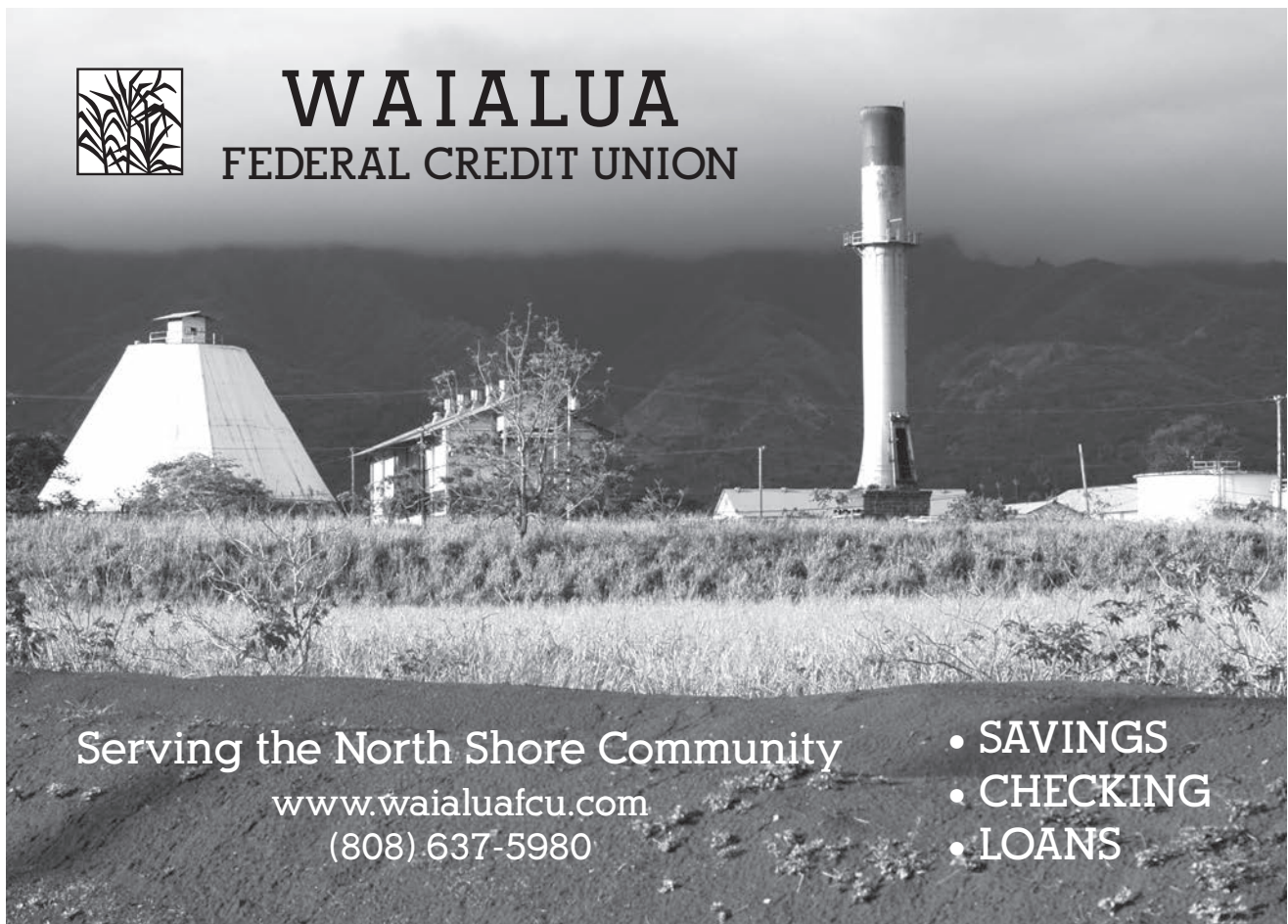


*"For God so loved the world
he gave his only begotton son
that whosoever would believe in
Him would never perish but
have everlasting life." John 3:16*

*Dr. Todd R. Okazaki
Hale'iwa Family Dental*



WAIALUA FEDERAL CREDIT UNION



Serving the North Shore Community

www.waiialuafcu.com
(808) 637-5980

- SAVINGS
- CHECKING
- LOANS

Happy Holidays

**KAHUKU PUBLIC AND SCHOOL LIBRARY
FRIENDS OF THE LIBRARY KAHUKU**

Happy Holidays
FROM
MĀLAMA PŪPŪKEA-WAIMEA

Mahalo to our amazing community for helping to make our fragile marine ecosystem a healthy and abundant place. Your support goes a long way to help us care for our ocean resources now, and for future generations.

Double your Donation!
Donations made between now and the end of the year will be **MATCHED DOLLAR FOR DOLLAR!**
In addition to your donation being **DOUBLED**, your original donation amount will qualify you for Mahalo Swag!

To learn more and make a tax deductible donation, visit www.pupukeawaimea.org

Bulletin Board

Munden Design & Build

Lic.#BC19632

Design • Plans • Permits • Construction
Additions & New Residences

808 391-8616

Providing quality work since 1978

World Class Notary

Based in Waiialua, HI

- 📍 NOTARY
- 👤 BACKGROUND CHECKS
- 👤 FINGERPRINTING
- 👤 IN HOUSE PARALEGAL
- 📄 APOSTILLE
- 👤 TRANSLATION SERVICES

📞 (808)489-6900

N-C PLUMBING & SUPPLY

Cont. Lic. No. C-8913



- RESIDENTIAL & COMMERCIAL SALES & SERVICE
- CONTRACTING & DESIGN
- HOME PLUMBING SERVICE
- PLUMBING FIXTURES, HEATERS • FREE ESTIMATES

Nestor P. Calilao (Owner)
P.O. Box 769
Waiialua, HI 96791

Business: (808) 637-8662
Cellular: (808) 372-8718

Cinderella Incineration Toilets

No water, no sewage, electric or propane powered
Complete waste handling solution
End product is sterile ash



www.ocr2000.com
808-262-2724



Aloha WHIS Alumni
The Class of 1975 cordially invites
you to the 27th Jubilee on
Wednesday, April 30, 2025 at the
California Hotel, Las Vegas.

Come connect with long-time friends and
relive memories at WHIS
For info: email WHISJubilee2025@gmail.com or mail
a self-addressed envelope to:
PO Box 894153, Mililani, HI 96789
Registration begins January 1, 2025.



**The Feed Trough in Waiialua is
accepting donations for the
Oahu SPCA until Christmas!**

ICC MOBILE DETAILING

- Interior Deep Cleaning
- Water Spot Removal
- Paint Enhancement



Alex Racoma
808.638.1900

Professional Car Detailing At The Comfort of Your Home

Loan offered by Republic Bank & Trust Company. Finance Charge will apply, if approved.
HOLIDAY ADVANCE LOAN
\$200 UP TO \$1,200*

FROM 12/9/24 UNTIL 1/18/25

LIBERTYTAX (866) 871-1040



**Would you like to
receive the
North Shore News
via email
FREE and in
COLOR?**

Just send us a
message at:
NSNHaleiwa@gmail.com

rajanee

thai cuisine

at Hale'iwa Store Lots - Dine In or Take Out
Mon, Tues, Thurs 11:30am - 8pm
Fri, Sat, Sun 11:30am - 9pm
Wednesday 4pm - 8pm 808-784-0023



By Sunny Unga, President KCA

"The holiday season is a time to reflect on the blessings we share as a community, and in Kahuku, there's so much to be grateful for. From the strength of our traditions to the progress we've made together, this season highlights the resilience, progress, and aloha spirit that unite and define Kahuku.

Our Kahuku Football Team once again gave us a season to be proud of. While their journey for a four-peat championship at the State Tournament didn't end as hoped, their dedication, sportsmanship, and relentless spirit continue to inspire us all. We are proud of our Kahuku Football Team and look forward to cheering them on next season!

In exciting community news, the long-awaited Pool and Recreation Center at Kahuku District Park is making significant progress. This year, we held additional three community meetings to gather input on the planning and design process. Our most recent meeting on October 29, 2024, was a great success. We're thrilled to have received a draft plan from G70

and we are continuing to move forward with this vital project. The dream of a recreation center and pool for our community is closer than ever!

As we celebrate these milestones, let's continue to nurture the spirit of collaboration and hope. Kahuku Community Association remains dedicated to serving as a catalyst for positive change and advocating for the needs of our community and the broader North Shore. From addressing local issues to shaping the future of our region, we stand together to ensure our voices are heard. We invite you to join us at our upcoming General Membership Meeting on January 21, 2025 to stay informed, share ideas, and help shape the future of Kahuku and the North Shore. Stay connected by visiting our website at kahukucommunityassociation.org and following us on Facebook for updates.

As we step into a new year, may we embrace fresh opportunities, build lasting connections, and continue to uplift our community. Wishing you and your 'ohana a season filled with warmth, joy, and endless possibilities for the year ahead!"

**Kahuku Community Association
General Membership Meeting**
Tuesday, January 21, 2025
kahukucommunityassociation.org



FarmLovers Market Hale'iwa

Thursdays 2PM-6PM

at Waimea Valley



Celebration on Thanksgiving Day

Mahalo from the North Shore News, Waialua Community Association and the North Shore Food Bank to the cooks, sponsors and volunteers supporting the 2024 Thanksgiving Day Celebration!

Mahalo: Loko Ea, Waialua United Church of Christ, YMCA-Camp Erdman, Haleiwa Jodo Mission, Ted's Bakery, Paalaa Kai Bakery, Haleiwa Evangelical Mission, Mohala Farms, Waialua Bakery, Malama Market, Haleiwa Elementary, St. Michael School, Waimea Valley, Dole, Kumu Hula La'ai Felix-Hula Makana a ke Aloha and mahalo to those who donated turkeys.



Thanksgiving Day Celebration Photos: NSN

North Shore News



2025 Schedule

PUBLICATION DATE	EDITION	DEADLINE DATE
January 15	1	January 3
February 12	2	January 29
March 12	3	February 26
April 9	4	March 26
May 7	5	April 23
June 4	6	May 21
July 2	7	June 18
July 30	8	July 16
August 27	9	August 13
September 24	10	September 10
October 22	11	October 8
November 19	12	November 5
December 17	13	December 3

MOKULEIA · WAIALUA · HALEIWA · KAHUKU · LAIE

The North Shore News is published every 4 weeks and available at area businesses including Waialua, Kahuku and Wahiawa libraries. The North Shore News is also available for free in color by email or by mail subscription please contact us. Mahalo for your continued support!

"The North Shore's most popular publication" since 1970
(808) 780-8037 · NSNHaleiwa@gmail.com

NORTH SHORE FOOD BANK

IG:@nsfoodbank
Sponsors: Hawaii Food Bank & Aloha Harvest

DISTRIBUTION UPDATE

3rd Wednesday of the Month
at Kaiaka Bay Beach Park

Wednesday, December 18, 12 noon

Wednesday, January 15, 12 noon

Wednesday, February 19, 12 noon

Happy Holidays

For more information and donations contact :
Linda (808) 780-8037





CLASSIFIEDS

The North Shore News is published every four weeks and available at area businesses and locations. Digital copies are emailed in color. The North Shore News is also available by mail subscription.

PRESS RELEASE POLICY: Submit press releases, email to the Editor. Releases should be viable news stories or human interest stories and are published on a space available basis only. You may attach photos. We reserve the right to edit and/or refuse all submissions including advertising.

EDITORIAL POLICY: The North Shore News is a community paper. We welcome articles, pictures and Letters to the Editor.

CLASSIFIED AD RATES: Classified ad rates are \$6.00 per line with up to 27 characters per line. The box ads are \$40.00 per column inch. Submit classified ads by email. Phone calls are always welcomed.

Views expressed by our contributing writers and advertisers do not necessarily reflect the view of the management and staff of the North Shore News. All rights reserved. Reproduction in a whole or part without permission is prohibited. 2024

Editor & Classifieds

Linda Seyler

Typography

Downtown General Store

Contributing Writers

Betty Depolito

Richard Sterman

Noah Grodzin

Councilmember Matt Weyer

Representative Amy Perruso

Penny Nakamura

Photography

Banzai Productions

Bill Romerhaus

North Shore Photography



Please recycle this newspaper.

SERVICES

LegaSea Energy Solar

Christensen Bros.
Construction Inc.
since 2005

Specializing in off grid livin'
Custom homes
License BC 27977 -
808-351-4657
@legasea_energy

BEE HIVE

\$250.00/ 10 FRAME BEE HIVE
LANGSTROTH
WILL PROVIDE ASSISTANCE
MASTER BEEKEEPER
682-1955.

LOCAL AUTO BODY & PAINT

Call Rick (808) 216-9419

Andres Plumbing Residential & Commercial

License #C-24500
35 yrs experience
808-256-7337

HONEY BEE HIVE SWARM

Removal & Relocation
(808) 724-9966

ANGELS PLUMBING

Repairs
Remodeling
Renovation

638-7878
Lic. #C12004



FREE ADS

Garage & Yard Sales,
Reunions, Lost & Found.
Email ad to:
NSNHaleiwa@gmail.com

HAWAII TREE CO.

Trimming & Removal
Professional-Reliable
Free Estimates
808-462-2749

GERMAN CAR SERVICE

Professional-Qualified
Technician
Call Gary
637-6800

ICC MOBILE DETAILING

Interior deep cleaning,
water spot removal,
paint enhancement.
Professional car detailing
at the comfort of your home.
808-638-1900

Cinderella Incineration Toilets

No water, no sewage, electric
or propane powered, complete
waste handling solution.
End product sterile ash.
www.ocr2000.com
808-262-2724

DOG/CAT NAIL TRIMMING

At your home-only \$30
Call (808)-388-5336

Paumalu Electric Inc.

new construction,
remodels and rewiring,
service and repairs.
Lic. C-18074 808 638 9054

Retired General Contractor

30 plus years -Specializing
in home and structural
repairs, fencing, painting
and more.
Gregg Biemann
808-778-0234

North Shore Mobile Welding Services Custom Gates (aluminum etc...)

(808) 223-4840 Ryan

North Shore Dump Runs

Call for Prices
(808) 223-4840

BUSINESS SERVICES CENTER

Fast & Convenient Copy, Fax, Scan,
Computer/Internet, Laminate, & More



Across from
the Haleiwa
Post Office

637-4558 • gonorthshore.org
#gonorthshore

LocalHawaiianProduce.com

Get your bag of
organic produce
Weekly home delivery,
6-8 items
Mom was right.
Eat your veggies!

Smoking Boar & The Coconut

Local Style Restaurant Catering Available

67-456 Goodale Ave Waiialua
All food made fresh to order!
808-282-8162

HOW TO CONTACT THE NORTH SHORE NEWS

Letters to the Editor, and other items submitted for publication consideration may be sent to us via:

MAIL: P.O. Box 117, Hale'iwa, HI 96712

E-MAIL: NSNHaleiwa@gmail.com

NSN4Linda@gmail.com

PHONE: (808) 780-8037

www.northshorenews.com

CLASSIFIED ADS

Next Issue - Jan 15, 2025
Deadline Date - Jan 2, 2025

Would you like to receive the North Shore News via email in COLOR!
Just send us a message at: NSNHaleiwa@gmail.com

OFF da ISLAND
Are you leaving Oahu on vacation or business? Do you live on a neighbor island, the mainland or foreign country and subscribe to the NSN? Send us a photo with someone in front of a sign or landmark holding a copy of the NSN or send a photo without the NSN. Email your photo with a caption including names, place of residence and photo location. NSNHaleiwa@gmail.com

ANIMAL CRIME STOPPERS 955-8300
Be their voice.
Be anonymous.
Loyalty works both ways.
HonoluluCrimeStoppers.org

FREE ADS
Garage & Yard Sales, Reunions, Lost & Found.
Email ad to: NSNHaleiwa@gmail.com

NORTH SHORE SERVICE CENTER
2nd Wednesday Every Month
10am-1pm
Wed, January 8
At the WCA (Hale'iwa gym)
Please join us, ALL are welcome!
Assistance in housing, food, health and fellowship by: IHS, NS Food Bank, Ko'olauloa Health Center, River of Life Mission, Education for Homeless Children and Youth, Kealahou West-Oahu, Narcotics Anonymous, SNAP, Legal Aid, Premier Benefits (Medicare), Ke Ola Mamo, and more...For more info or to join us as a provider, call Linda at 808-780-8037

North Shore Food Bank
IG @nsfoodbank

HELP WANTED

Household Help
Beachfront Estate
16 hours per week
808-637-0808

MATSUMOTO SHAVE ICE
Now Hiring!
Apply in person daily
10am - 6pm
808-637-4827

Kuilima Farms is Hiring!
Farm Manager and Farm Coordinator
Compensation and job prerequisites can be found in the online job descriptions. For more details, visit: ponopacific.com/about-us/opportunities
To apply, please submit a cover letter and resume to ponojobs@ponopacific.com

FOR SALE

OCEAN VIEW 5 ACRE HALEIWA FARM LOTS FOR SALE \$700K AND UP
Ralph Gray RA
Lic# 57803
Hawaii Homes International LLC
HawaiianBeachfront.com
808-295-0704

Historic Haleiwa Christmas Ornaments
2024 Historic Haleiwa Theatre
2022 Anahulu Stream Bridge
Available at the North Shore Chamber of Commerce
808-637-4558

FOR RENT

OFFICE SPACE FOR LEASE
Haleiwa Town Center
wschoettle@gmail.com
808-637-8000

MISCELLANEOUS

Iam Tongi
December 31, 2024
January 1, 2025
Blue Note Hawaii
2335 Kalakaua Ave, Hon.

"Life is Precious" Rescue a Pet this Holiday Season
If you would like to rescue a pet, please visit the Oahu SPCA
823 Olive Ave, Wahiawa
808-754-1519 or visit their website oahuspca.org

Drug Problem? Call Narcotics Anonymous 808-734-4357
Meeting 7pm Mondays
Cottage 2 behind Waiialua Community Asso.
66-434 Kam Hwy Haleiwa

TAI CHI CLASSES
Waiialua Rec Center
Mon & Weds 9:30-11:00am
Sunset Beach Elem Pavilion
Tues 9:30-11:00am


HISTORICAL TOURS
Walking tours of historic Hale'iwa and Waiialua Towns by local historian
\$20 by appointment
808-342-8557
info@WaiialuaHistoricalSociety.org

Coconut Rhinoceros Beetle response:
for info visit hdoa.hawaii.gov/pi/main/crb/
email: BeetleBustersHi@gmail.com
phone: (808)643-7378
call or text: (808)678-5244

Hawai'i Statewide Marine Animal Stranding, Entanglement, and Reporting Hotline
Includes stranded/injured sea turtles, monk seals, dolphins, and whales.
Phone: (888) 256-9840

North Shore Neighborhood Board Meeting
Tuesday, January 28, 7pm
at the Waiialua Elementary Cafeteria, 67-020 Waiialua Beach Rd

Get Involved! North Shore Neighborhood Board Elections
December 20, 2024
the election process begins!
Candidate registration forms are released go to: <https://www8.honolulu.gov/nco/neighborhood-board-elections/>

What's Happening at Waimea Valley?
Ka 'Aha Hula I Waimea is a new community presentation program initiated in 2024.
Hula hālau are invited into the Valley to perform with live or recorded music. The experience is a highlight for both visitors to the Valley and the hālau members who connect the wahi pana o Waimea. The upper meadow (Ka'ilī'ili) is the site of the performance with hōike at 11am and 1pm with the regular visitor or kama'āina admission rates, or with the annual pass Valley membership.
Scheduled Performances
Dec 18: Nā Wāhine o ka Hula Mai ka Pu'uwai (Kumu Candy Pollack)
Dec 21: Hālau Kilipohē Nā Lei Lehua (Kumu Hula Sky Gora and Liko Cooke)
Dec 28: Hālau Hula 'O Namaka (Kumu Hula Shirley Namakahulali Recca)
More performances to come in 2025!
Check our website 'Events' page for updates.
www.Waimeavalley.net



For more information: www.lokoea.org | 808-637-3232 | info@lokoea.org



As we look back on the past 15 years, we are filled with so much gratitude for the journey we've shared.

The Mālama Loko Ea Foundation is dedicated to restoring Loko ea fishpond and nurturing the growth of the precious ecosystem here in Kawaioloa. Our organization has been fortunate to witness exponential growth over the years thanks to the unwavering support of our community. Our success can be attributed, in large part, to the deep understanding and power of pilina—the concept of connection. Through strong relationships with our kaiāulu, the 'āina, and each other, we've been able to achieve remarkable milestones and make a lasting impact on our future generations. The fishpond itself has also been a profound source of inspiration and healing. It has taught us about the interconnectedness of all living things, the importance of stewardship, and the power of nature to restore balance.

Through our collective efforts, we have witnessed firsthand the transformative power of place. As 2024 draws to a close and we reflect on this year, we are filled with appreciativeness for the countless individuals who have contributed to our mission. We extend our warmest wishes for a joyous holiday season filled with aloha, laughter, and cherished moments. May the new year bring peace, prosperity, and opportunities for growth and renewal. We look forward to continuing our work in the years to come, preserving our cultural heritage and creating a sustainable future for many more generations.

