



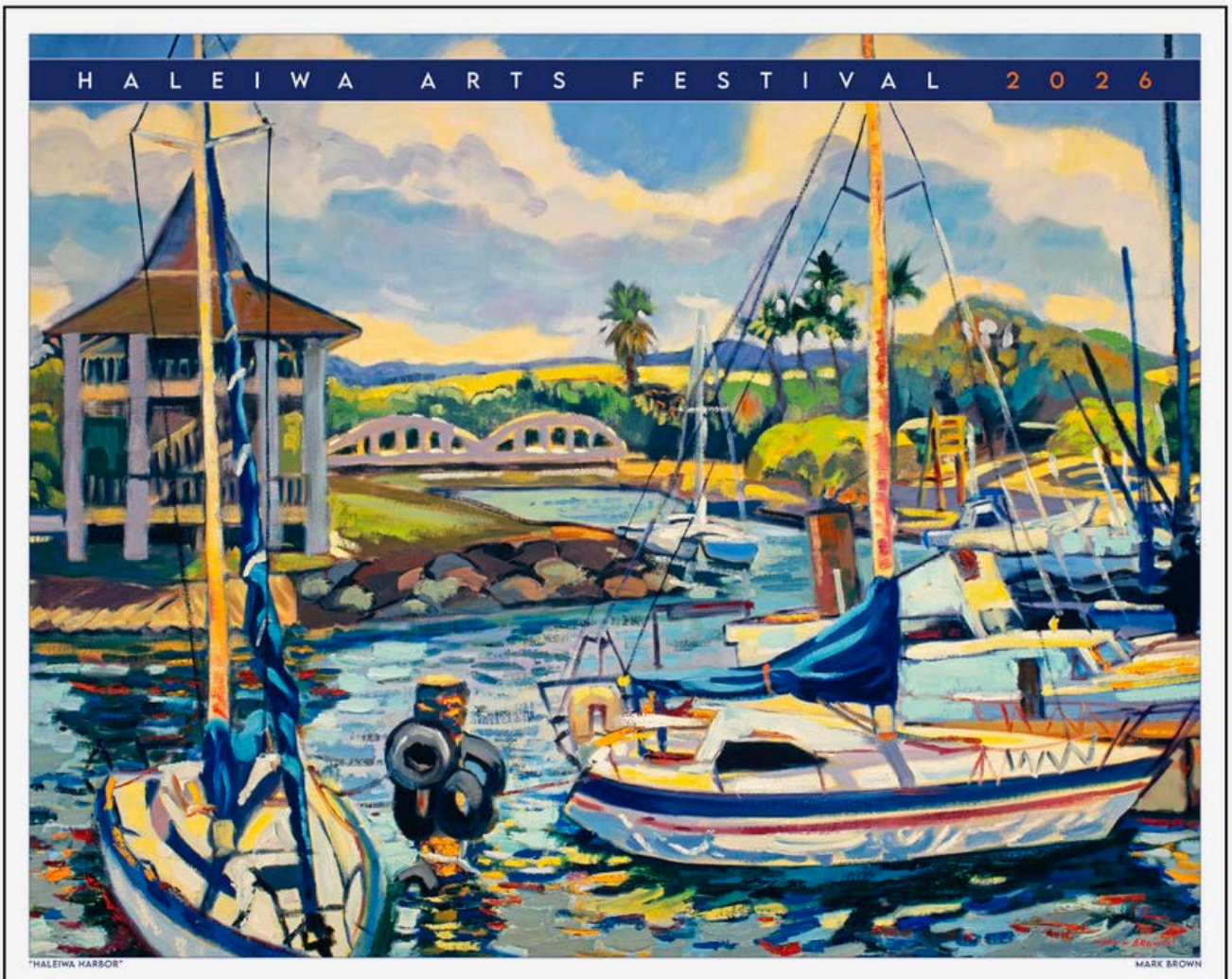
"E Ala Na Moku Kai Liloloa"

Haleiwa Arts Festival
A NON-PROFIT ORGANIZATION

27th Annual
HALEIWA ARTS FESTIVAL

JUNE 13 / 14 • HALEIWA BEACH PARK • 10am - 5pm

NORTH SHORE NEWS June 3, 2026 VOLUME 43, NUMBER 6



2026 Featured Artist Mark Brown

Mark's love of our islands and people are evident in his paintings - a majority of which were done on site outdoors (Plein Air). These 3 to 7 hour sessions produce artwork that Mark exhibits in many galleries throughout the islands. Born and raised in Hawaii, Mark has been mentored by friends on the Fine and commercial side of Art, and one influence has been to attend weekly life drawing sessions which keeps his drawing and painting skills sharpened. In addition to Art galleries, murals and commissions, Mark has been teaching a weekly Plein Air class every Saturday since 2000, starting as an instructor with the UofH at Manoa Outreach College.

Mark has been in the **Haleiwa Arts Festival** since the year 2000 - and pleased that he has been the **Featured Poster Artist** in years 2002, 2011, and again this year.

LEARN MORE AT: HaleiwaArtFestival.org

PURCHASE A POSTER AT THE FESTIVAL SHOP & HAVE IT SIGNED BY MARK!



North Shore Chamber of Commerce News

Hale'iwa 4th of July Celebration Returns for America's 250th Anniversary

The North Shore Chamber of Commerce is proud to announce the return of the annual Hale'iwa 4th of July Celebration, bringing the community together for a full day of family-friendly fun, local pride, and patriotic celebration.

This year's event carries special meaning as communities across the nation prepare to celebrate the 250th anniversary of the United States. Here in Hale'iwa, the milestone will be marked in a way that reflects the values of the North Shore: community, resilience, aloha, and care for one another.

Following the recent Kona storms and flooding that impacted families, farms, businesses, and neighborhoods across the region, this year's celebration is also an opportunity to come together, support local businesses, and restore a sense of normalcy and joy for the community.

The event will feature local food vendors, entertainment, family activities, community booths, a car show, a hot dog eating contest, keiki activities, and the evening fireworks show. The celebration is designed to be free and welcoming for residents and visitors alike, while honoring veterans, first responders, kūpuna, families, and the next generation.

"The Hale'iwa 4th of July Celebration has always been about more than fireworks," said Carol Philips, Chair of the North Shore Chamber of Commerce. "It is about gathering as a community, supporting one another, and celebrating the people and place that make Hale'iwa so special. This year, with America's 250th anniversary and our community recovering from the Kona storms, it feels especially important to bring everyone together."

The North Shore Chamber of Commerce is currently seeking sponsors, vendors, volunteers, and community partners to help make this year's celebration possible. Sponsorship support is especially important to ensure the event remains free and accessible to the public.

Local businesses, organizations, and community members who would like to support the event are encouraged to reach out to the North Shore Chamber of Commerce.

The annual Hale'iwa 4th of July Celebration will take place on Saturday, July 4, 2026, in Hale'iwa. More details, including the event schedule, vendor information, sponsorship opportunities, and volunteer sign-ups, will be announced soon.

For more information, visit www.gonorthshore.org or contact the North Shore Chamber of Commerce.



Gregory Kamisato, a beloved teacher, friend, and father figure to many, passed away on April 21, 2026. For over 30 years, Mr. Kamisato served the Waialua High and Intermediate School community as an English and yearbook teacher, coach, football announcer, and class and club advisor.

His classroom was a sanctuary where everyone was welcome. He dedicated his career to helping students find their voices and challenge themselves. Known for his quiet generosity, he frequently sponsored students in need out of his own pocket—ensuring no one missed out on buying a yearbook or attending prom due to financial hardship.

Long after graduation, he remained a fixture in his students' lives, keeping in touch with countless alumni, celebrating their successes, supporting their businesses, and eventually welcoming their own children into his classes.

Waialua High and Intermediate School is planning a school tribute to honor his lasting impact and legacy. A Celebration of Life will be held on July 5, 2026, at Mililani Mortuary's Mauka Chapel.

**Mahalo
nui loa!**

Haleiwa Community,
for the support and
encouragement during
the flood recovery process.

God is Good! ♥

WE ARE VERY THANKFUL!

**First Baptist
Church & Preschool of Haleiwa**



TICKETS

SUMMER CONCERT SERIES

SATURDAYS @ 4 PM • HOSTED BY KIMO KAHOANO

JUL 27

MAIN LAWN



Ei Nei

Jerry Santos & Kamuela Kimokeo



The Vitals



Featuring

Kumu Rich Pedrina with Halau Hula 'O Napunahelconapua

JUL 25

MAIN LAWN



Nick La'a



Micah G.



Ho'onu'a

Featuring

Kumu Liko Cooke & Sky Gora with Halau Kilipohe Na Lei Lehua

AUG 29

UPPER MEADOW



Mark Yamanaka



Herb Ohta Jr. & Jon Yamasato



Norm Thompson

Featuring

Kumu Kalimakuhilani Akemi Kalamanamana Suganuma Southard & "TC" Christopher Southard with Halau I Kalima Kuhi Lani

@WAIMEAVALLEYOAHU

SPECIAL KAMA'AINA OFFERS

Jun 11: King Kamehameha Day

Free kama'aina admission

Jun 21: 'Ohana Day

50% off kama'aina admission

Annual Memberships

Individual, family, & lifetime passes for kama'aina & military



**Representative
Amy
Perruso
Serving You in District 46**

Congratulations, Graduates!

As graduation season arrives across the North Shore and Central O'ahu, I've been thinking a great deal about what it means to send young people into adulthood during a period of profound transition — economically, politically, environmentally, and technologically.

To the graduates of Waialua, Leilehua, Kahuku and all of our schools: congratulations. You are stepping into the world at a moment when many of the systems that shaped previous generations are changing rapidly. That reality can feel uncertain. But it is also an opportunity.

This legislative session revealed something important about Hawai'i's future. Increasingly, many of our hardest public debates are not really about isolated bills or political personalities. They are about the kind of economy and society we are building — and who that future is actually being built for. One example is the ongoing debate around rooftop solar and the Renewable Energy Technologies Income Tax Credit (RETITC) under SB 3125.

Over the last two decades, Hawai'i helped build one of the most successful rooftop solar markets in the country. The RETITC became one of the primary tools that allowed families and businesses to invest in renewable energy systems. According to a recent analysis of SB 3125 CD2 by Hawai'i Appleseed, Hawai'i taxpayers claimed roughly \$100 million annually in RETITC credits in recent years, making it one of the state's largest clean-energy tax incentives.

But the same report also showed something more complicated: nearly half of all individual RETITC claims went to households earning over \$200,000 annually. That reflects a deeper structural challenge in Hawai'i. The people most able to access clean-energy technologies are often the people with enough wealth, tax liability, credit access, and housing stability to participate in the first place.

At the same time, the solar industry itself supports local jobs, electrical contractors, installers, engineers, financing professionals, and resilience infrastructure that becomes critically important during disasters and outages.

This is why the debate over SB 3125 became so intense. The bill imposed a \$40 million annual cap on new renewable energy credits beginning in 2027, phased out eligibility for higher-income households, and sunsets the program after 2029. In exchange, the state projects approximately \$360 million in savings over five years.

That savings matters because Hawai'i is entering a period of serious fiscal pressure. Federal uncertainty, slowing tourism growth, climate-related infrastructure

costs, and longstanding affordability challenges are all converging at once. The Legislature is increasingly confronting difficult questions about how to stabilize state finances while also protecting working families from rising costs.

That broader tension is part of why conversations about a possible special session on SB 3125 continue. Some residents, contractors, and clean-energy advocates are asking whether portions of the law should be revisited, especially the retroactive provisions affecting rooftop solar projects already underway. Others argue the state simply cannot continue sustaining tax expenditures at prior levels given the larger fiscal pressures ahead.

Both concerns are real.

And this is what I hope graduates understand as they enter adulthood and public life: democracy is not about pretending difficult tradeoffs do not exist. Responsible citizenship requires learning how to think critically, compassionately, and honestly inside those tensions.

The future of Hawai'i cannot simply become a fight over shrinking resources. We need a larger vision than that. We need to ask harder questions about how to build systems that allow ordinary working families — not just affluent households — to participate in clean energy ownership, resilient infrastructure, and long-term economic stability.

That may mean community solar, public green financing, low-interest energy loans, neighborhood battery systems, utility reform, or entirely new models we have not yet fully imagined. But none of those systems will emerge automatically.

Democracy is not something that exists somewhere above us. It is something communities continuously build together through participation, organization, analysis, and care for one another.

And if the last few years have taught us anything — from fires to floods to economic instability — it is that resilience ultimately begins locally. It begins with neighbors knowing neighbors, with communities organizing before disaster strikes, and with young people deciding they are not powerless spectators to history.

So to this year's graduates: congratulations not simply for finishing school, but for entering public life at a moment when Hawai'i genuinely needs your imagination, your courage, and your willingness to help shape what comes next.

The world you inherit will not be stable in the ways previous generations expected. But it can still become more just, more democratic, more resilient, and more humane — if your generation chooses to help build it together.

North Shore News

Next Issue - July 1

Deadline Date - June 17

Twenty Years of Conservation at Waimea Valley

by Parker Powell,
Conservation Manager Hi'ipaka, LLC

In 2026, Waimea Valley marks 20 years since its acquisition by the Office of Hawaiian Affairs and the establishment of its Conservation Department. Beginning in 2006, under the guidance of the Audubon Society, early conservation efforts focused on wetland habitat management to support the resilience of native bird species. In the years that followed, the Conservation Department expanded its scope to address broader ecosystem restoration needs, including forest protection, reforestation, and active land management.

A waterbird survey completed in January 2026 yielded the largest recorded number of 'alae ke'oke'ō at Waimea, with a total of 13 individuals documented in the estuary. Our 'Alae'ula population remains stable at around 20, with 4 new chicks born in Pond One near the middle of March 2025. Conservation staff actively manage the ponds to maintain suitable nesting sites. The birds living in the pond habitat did attempt a nest after the most recent cleaning, and the birds were observed mating.

During its early years, Hi'ipaka, LLC staff conducted extensive monitoring to assess watershed conditions, carried out plant surveys of existing species on the property, and established long-term goals for improving forest ecosystems. The development of a Conservation Action Plan, completed with the support of The Nature Conservancy, set goals and objectives for future environmental and cultural conservation activities in Waimea Valley. One of the first major restoration sites identified was a 16-acre area in the back of the Valley along Drum Road. This special site contains a highly diverse old-growth native forest ecosystem and became known as the Mauka Restoration Site. It was established as the Valley's first fenced forest management unit.

The installation of fencing in 2013 at the Mauka Site marked a critical milestone. Designed to exclude invasive feral pigs, the fence helps protect the area from disturbance and limits the spread of fast-growing invasive plant species. Native plants, which typically grow more slowly, are especially vulnerable to being overtaken by weeds without such protection. Since 2013, five additional fenced units have been established, bringing the total to six fenced areas, encompassing approximately 120 acres protected from pig activity. Four of these units are located on Kalahe'e Ridge, where the majority of the reforestation efforts are concentrated.

In 2015, Waimea Valley received approval from the State of Hawaii Department of Forestry and Wildlife's Forest Stewardship Advisory Committee to implement a 10-year management plan under the Forest Stewardship Program. This plan outlined strategic actions to enhance forest health and resilience. Following the successful completion of the first 10-year plan in 2025, which included the installation of fenced units and the establishment of multiple reforestation sites, a new ten-

year plan was developed and approved, ensuring the continuation of long-term conservation efforts through 2035.

The new Forest Stewardship Program will focus on active management within these fenced units, with an emphasis on establishing diverse, multi-story native forest ecosystems. Efforts will also prioritize the recovery and enhancement of vulnerable native species such as 'iliahi (*Santalum freycinetianum*), wiliwili (*Erythrina sandwicensis*), and lama (*Diospyros sandwicensis*), as well as the critically endangered nioi (*Eugenia koolauensis*). A carbon offset program was established in 2019 to encourage sponsorship of the conservation plantings with a focus on koa (*Acaia koa*) tree planting. More information can be found on our website. waimeavalley.net/donate

Since its inception, the program has successfully collected seeds, propagated, and replanted over 100,000 native plants. Much of this work has been made possible through the support of a dedicated volunteer program. Each month, the Conservation Department hosts "Hānai 'Āina" volunteer workday focused on forest restoration activities that involve hiking to the native tree planting sites. These events typically take place on the third Thursday of each month; with additional Saturday opportunities offered from April through September.

Community members can sign up to participate in Hānai 'Āina through the Waimea Valley website or by contacting Volunteer Coordinator Malia Evans at volunteers@waimeavalley.net.



CONGRATS GRADUATES! 

Celebrate your graduation success with sweets from PKB!



Show us a photo of your diploma and get 25% OFF your next purchase of a dozen or more Snow Puffies for your graduation party!



Phone Orders:
(808) 637-9795

Be sure to sign up for our PKB daBest VIP Card to save on every purchase!

www.pkbsweets.com

Turtle Bay Foundation Awards \$202K in Scholarships to 86 Students

More than \$1.8 million awarded to 700 students and nonprofits since 2012

The Turtle Bay Foundation awarded \$202,000 in scholarships to 86 students from O'ahu's North Shore and Ko'olauloa communities through its 13th annual scholarship program, continuing its support for local students pursuing higher education. Established in 2012 as the charitable giving arm of Turtle Bay Resort, the Foundation has awarded more than \$1.8 million in grants and scholarships, benefiting 700 students and more than 70 nonprofits across the region.

"Over the last 13 years, the Foundation's scholarship awards have recognized and supported hundreds of local students as they pursue their dreams of higher education, so they may return home with the skills and knowledge to uplift the communities that raised them," said Douglas Chang, President of Turtle Bay Foundation and General Manager of The Ritz-Carlton O'ahu, Turtle Bay. "We are so proud of these exceptional young adults as they take the next steps in their journey and are inspired knowing that they will make a difference both locally and globally."

Scholarships were presented across five categories, including the top 'Ilima \$10,000 award. Four high school students were selected as 'Ilima Scholars, based on their outstanding academic achievement, leadership and commitment to community service, including:

- Hannah Mikaela Placido — Waiialua High School, attending University of Hawai'i at Mānoa
- Ofa Taumoepeau — Kahuku High School, attending the US Naval Academy
- Mindy Strain — Kahuku High School, attending Washington State University
- Elysse Burgoyne — Hawai'i Technology Academy, attending Brigham Young University–Hawai'i

"Receiving the Turtle Bay Foundation scholarship allows me to focus fully on my education without placing additional financial stress on my parents, while

giving me the opportunity to build the knowledge, skills, and experience needed to become a compassionate healthcare professional." —

Hannah Placido, 'Ilima Scholar

'Ilima Scholar Ofa Taumoepeau said, "Through my education, I hope to create meaningful jobs and opportunities that support North Shore families and local businesses, and the Turtle Bay Foundation scholarship is helping make that goal possible."

This year's Barbara Keen Scholarship, a \$1,000 award donated by a The Ritz-Carlton O'ahu, Turtle Bay team member to support students pursuing STEM degrees, was awarded to Kahuku High School student Martina-Elizabeth Camit-Simon, who plans to study biochemistry at the University of Hawai'i at Hilo.

The Foundation selects recipients based on academic performance, financial need, extracurricular activities, leadership accomplishments, and community involvement.



Ilima recipients, L to R: Hannah Placido, Mindy Strain, Ofa Taumoepeau, along with Douglas Chang. Not pictured Elysse Burgoyne.



Recipients of the 2026 Turtle Bay Foundation Scholarship Program gathered at The Ritz-Carlton O'ahu, Turtle Bay after the Foundation awarded \$202,000 in scholarships to 86 students from O'ahu's North Shore and Ko'olauloa communities.



Ask the Doctor

Nash Witten, MD

Dear Doctor, "My son starts college this fall. Shouldn't he see you before he leaves for school?"

Yes! If your child will be attending college, trade school, or joining the military, a physical examination form typically needs to be completed by their primary care provider. These forms require at least documentation of prior immunizations, such as measles-mumps-rubella (MMR), tetanus-diphtheria-pertussis (Tdap), and varicella (chickenpox). Most schools, like the University of Hawai'i system, also require that students who will be living in a dorm for the first time and are under age 21 be vaccinated against meningococcal disease. Depending on the state where your child will be attending training, tuberculosis screening is also sometimes required.

This appointment is also a great opportunity for your child to ask us about any health questions they may have (e.g., acne, birth control, anxiety, depression, sexually transmitted infections) and for us to talk about preventive care for this age group. Sadly, the leading cause of death for ages 15-24 is unintentional injuries, primarily motor vehicle-related, so having a real talk about drunk driving or getting in the car with someone under the influence is recommended.

It is also helpful to talk with your child about accessing medical care during training. Telehealth is great; however, legally, wherever the patient is located is where I am practicing medicine. To practice medicine in a state, I need a medical license in that state, so most Hawai'i medical providers can only provide in-person care in Hawai'i. There are some ways to get long-term medications, like asthma or allergy medications, filled when out of state, which can be discussed during the appointment.

Often, patients in this age group have questions about their bodies, such as a "funny looking" skin spot or joint pain, so this appointment is a good time to review concerns as well!

Dr. Nash Witten is a Board-Certified Family Medicine physician at Queen's Health Care Centers, Hale'iwa. You can submit questions at nsnaskthedoctor@gmail.com.

ANY KINE LINE Dance

Waiialua Community Association Fundraiser

Saturday, June 20, 2026 · 4:00 PM – 8:00 PM

Join us for an evening of island-style line dancing!

- Western • Zumba • Hula • Contemporary Line Dancing

TICKETS

- Presale \$25
- At the Door \$30
- Kids (12 & under): FREE
- ★ Includes 1 complimentary door prize entry!

★ Food ★ Drinks ★ Prizes ★ Good Vibes! ★

66-434 Kamehameha Highway, Haleiwa

Bring your friends & family — everyone is welcome!

PKB SuperSaver FATHER'S DAY SPECIAL

I ♥ LOVE FATHER

Come in with your child or children and receive a 20% discount on your entire purchase!

This offer is valid from May 27 - June 16, 2026. Cannot be combined with other promotions, discounts, or daBesy VIP card discount. Have a great day!

Phone Orders: (808) 637-9795

Be sure to sign up for our PKB daBest VIP Card to save on every purchase!

www.pkbsweets.com



Councilmember
Matt Weyer
Serving You in District 2

Aloha North Shore Neighbors,

As the summer season starts, I want to send a huge congratulations out to the class of 2026. Wishing all graduating students from District 2 and beyond continued success as you begin this exciting new chapter. Best wishes for a bright and successful future ahead.

Congratulations to the Waialua High School Girls Surf Team and Kahuku High School Boys Surf Team for making history as the inaugural 2026 HHSAA Surfing State Champions. Competing at Ho'okipa Beach Park on Maui, the Waialua girls team secured the highest overall score of 4,210 points, becoming the first-ever girls surfing state champions in Hawai'i high school history. Additional congratulations go to Skai Suitt and Hanae Rose for capturing individual state titles in shortboard and longboard, respectively.

The Kahuku boys team also delivered an outstanding performance, finishing with the top boys team score of 3,150 points. A special shout-out to Micah Ah You for his second-place finish in the Boys Longboard division. It was an honor to recognize both teams during the May Full Council Honorary Certificate ceremony.

Fiscal Year 2027 Budget Season

From March to June, the City Council conducts a thorough review of the administration's proposed Operating and Capital Improvement Program (CIP) budgets for the upcoming fiscal year. Although the process is still ongoing, I am pleased to share that several major investments were approved by the budget committee to strengthen our North Shore community.

This year's budget includes significant funding focused on enhancing public safety, resiliency, and support for families across District 2. My office successfully secured funding for federal flood mitigation studies at Kaiaka Bay in Waialua and Waialele Stream in Kahuku. Additional investments include relocation planning for the Waialua Fire Station and improvements to the Kahuku Ambulance Unit Facility. The budget also includes \$3 million for the Islandwide Resilient Emergency Shelter Program, which will help build shelters capable of withstanding Category 5 hurricanes and other hazards.

Other key investments include continued funding for the Hale'iwa Beach Park Canoe Halau and the Kahuku Swimming Pool and Recreation Center, as well as \$1 million for kūpuna food programs to help ensure our kūpuna remain connected and cared for.

The FY27 Budget will go through its third and final reading before the City Council on June 3, 2026. For more information on the budget, please visit www.honolulu-citycouncil.org/fy27budget.

U.S. Small Business Administration Tour

Mahalo to the U.S. Small Business Administration (SBA) for visiting the North Shore to see firsthand the impacts of the Kona Low storm damage. I appreciated the opportunity to join SBA Deputy Administrator Bill Briggs and SBA Office of Disaster Recovery and Resilience Associate Administrator Chris Stallings for a tour of storm-damaged areas, a visit to the Disaster Loan Outreach Center at Waialua United Church of Christ, and roundtable discussions with community stakeholders to help ensure our residents and small businesses are receiving the support they need throughout the recovery process.

SBA and FEMA continue to offer in-person assistance at several locations across the North Shore and Ko'olauloa, including the Old Waialua Courthouse, Waialua United Church of Christ, Hau'ula Civic Center, KEY Project, and the Courtyard by Marriott in Lā'ie. For more information, please visit oneoahu.org/help.

Lā'ie Rebuild O'ahu Event

Mahalo to the Department of Planning and Permitting (DPP) for hosting the "Rebuild O'ahu" event in Lā'ie, bringing together resources to support residents and businesses impacted by the storms. Approximately 70 households connected directly with City, State, federal, and community partners for guidance on rebuilding. DPP staff were on hand to help attendees navigate questions on building permits, grading requirements, flood zone regulations, and Special Management Area (SMA) guidelines. DPP will continue to evaluate the need for additional Rebuild O'ahu events moving forward.

Hale'iwa Ali'i Beach Park Bathroom Repairs

The Department of Parks and Recreation (DPR) will repair the concrete walls throughout the stand-alone comfort station at the Hale'iwa Ali'i Beach Park. The work is underway and is expected to be completed in early June. This comfort station and adjacent beach showers will be closed throughout the project. Bathrooms and showers in the park's surf center (Waialua-side) will remain open during the repairs.

If you have questions or concerns, please feel free to contact my office at (808) 768-5002. Mahalo for your continued support and engagement.

North Shore

Neighborhood Board Meetings #27

Next Meeting: June 23, 2026

4th Tuesday of Every Month - 7pm
 at Waialua Elementary School Cafeteria
 67-020 Waialua Beach Rd.

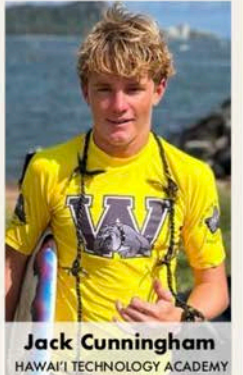
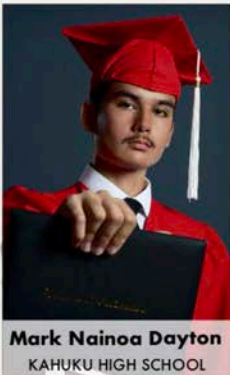
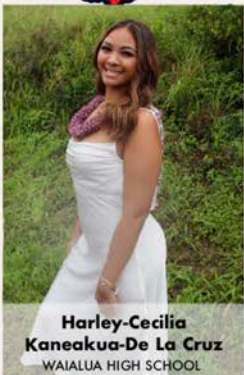
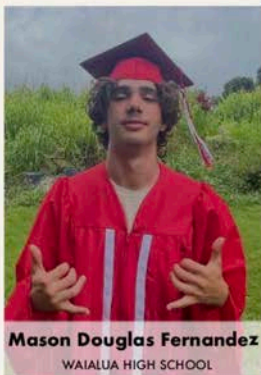
Regular meeting agenda found at:
www.honolulu.gov/nco

To view previous meetings go to:
olelo.org/olelonet



Councilmember Matt Weyer recognized the Waialua High School Girls Surf Team and the Kahuku High School Boys Surf Team during the May Full Council Honorary Certificate Ceremony for their historic achievement as the inaugural 2026 HHSAA Surfing State Champions.

Congratulations FROM  TO THE **2026 GRADUATES!**



From all of us at Surf N Sea, we're celebrating each of you and the exciting journeys that lie ahead.

Wishing you endless success, adventure, and new beginnings ahead.



IMMERSE YOURSELF

IN THE HEART OF HALE'IWA

Hui (Our Partners)



Kai Ku Hale



Stonefish Grill



EARTH TECH



Waiialua High & Intermediate School

Evangeline Shriver-Kealoha
President & SBG Historian

Kitty Cavan
Vice President

Yasmin Canfil
Secretary

Leah Lacar
Treasurer

Asia Macatiag
Historian

Moorea Dominique
Class Council Representative

Sandrine Agtarap
SBG Secretary

Graduating Class of 2026

Abilla, Emery
Agtarap, Sandrine Frances
Amper, Paetyn
Apau, Jace
Artis, Gabriel
Baguio, Kacie
Balanay, Jolie
Baldonado, Isaac
Balmoja, Brayden
Barit, Maui
Basilio-Chun, Laney
Behlers, Eva
Benavente-Sabido, Damien
Berlin, Ruben
Blackmore, Marley
Blancaflor, Keona
Born, James
Buenrostro, Alejandro
Canfil, Yasmin
Carroll, Veronica
Cash, Nakoia
Cashman, Jacob
Cavan, Kitty
Ching, Heaven
Chong, Yalenah
Clark, Aidan
Corpuz, Chrissan
Dicion, Ariana
Dingal, Rhianna
Diwa, Monica
Dobecki, Simon
Domingo, Kyla
Dominique, Moorea
Fernandez, Mason
Gasior Giltner, Tehani
Gilman, Kuulei
Gonzalez, Audrey
Green, Reily
Guerrero, Hogan
Guzman, Ken
Hewitt, Carter
Hirota Fujishige, Jensen

Jansen, Jordan
Kahalewai-Cabacungan, Jeremiah-
Jayden
Kanaiaupuni, Ezekiel
Kaneakua dela Cruz, Harley
Kauwalu, Makena
Labutong, Princess
Lacar, Leah
Lemau, Brave
Lindley-Molina, Legend
Linke, Piper
Lisius, Noah
Macatiag, Asia
McIntosh, Leif
Meehan, Blessany
Moody, Finneus
Moura Meller, Francesco
Nichols Dos Santos, Keitan
Pacheco, Trinity
Pactol, Ravyn
Paracuelles, Elijah
Parisi, Izabella
Petschow, Maddison
Phelan, Penny Lane
Placido, Hannah
Polendey, Jazlene
Pollock, Orrin
Ramos, Hayze
Rivera-Torres, Albryan
Roloos-Naehu, Zion
Salbedo, Kailee-Ann
Santos, Jordyn
Shriver-Kealoha, Evangeline
Sirling, Thalia
Soriano-Pascual, Kymani
Suenaka-Manners, Kaipo
Suitt, Stone
Supnet, Genesis
Tantog, Zoe
Taylor, Maika
Toia, Pua
Tucker, Cole

Udaundo, Alleine
Udaundo, Zamantha
Vieira, Aika
Williams, Brycen
Witten-Wathanasook, Miles
Zara, Paul

A Message from the Principal: Congratulations, Class of 2026!

Dear WHIS Graduates,

The resilience you developed during your time here—and especially during the trials of this past spring—is a gift that will serve you for the rest of your lives. The world outside this campus will have its own storms, but you already know how to survive them. You know how to rebuild, how to hope, and how to lead with kindness.

As you branch out into the world to chase your dreams, never forget the soil you grew up in. Carry the spirit of Waiialua with you. Stay grounded in your values, stay fierce in your resilience, and always stay Rooted in Aloha.

Congratulations, and way to finish strong, Bulldogs!

With Love and Aloha,
Principal Alexander



**START STRONG
DREAM BIG-WORK HARD-MAKE IT HAPPEN
FINISH STRONG**

27TH ANNUAL • HALEIWA ARTS FESTIVAL JUNE 13/14 • HALEIWA BEACH PARK



2026 Featured Artist Min Hong

Min Hong is an Oahu-based artist whose work captures the warmth and quiet beauty of Hawai'i through a lens of memory, emotion, and light. Originally from South Korea, she discovered her artistic voice after moving to the islands, where Hawai'i's colors, culture, and spirit of aloha became her deepest inspiration.

Her creative journey began as an in-house designer at Greenroom Hawai'i, where she was introduced to surf culture, island art, and collaborations with diverse clients. Since then, her illustrations have appeared in UNIQLO Hawai'i, Hawai'i travel guides, and KauKau Magazine. Her signature style blends soft, radiant palettes with quilt-inspired geometric patterns, often featuring hula and island figures as expressions of inner peace and reflection, inviting viewers to reconnect with a sense of warmth, calm, and belonging.

ANNUAL ARTS FESTIVAL •

K • NORTH SHORE OAHU • HAWAII

THE 27TH ANNUAL HALEIWA ARTS FESTIVAL

features over 100 juried visual artists as well as musicians, singers, dancers, student art and keiki art activities. The event takes place at Haleiwa Beach Park on Oahu’s North Shore **SATURDAY, JUNE 13** and **SUNDAY, JUNE 14** from **10am to 5pm**.

Event attractions include both traditional and contemporary artists with original works and limited editions in painting, photography, printmaking, ceramics, wood, fiber, sculpture, jewelry, glass, digital and other mediums. **Art is available for purchase directly from the artists.**

This celebration also includes Performance Art every hour, with many of the artists presenting original music and dance.

Art demonstrations, community information, keiki activities and a wide selection of festival foods are also offered to enhance this exciting two day community event.

SPEND THE WEEKEND WITH FAMILY AND FRIENDS AT THE HALEIWA ARTS FESTIVAL

• PERFORMING ARTS **STAGE** •

SATURDAY / JUNE 13

SUNDAY / JUNE 14

10AM	HĀLAU I KALIMA KUHI LANI
11AM	LOGAN KNIGHT
NOON	CASTLE H.S. PERFORMING ARTS
1PM	DARRIN CRUMPTSON
2PM	THE GROOVE
3PM	THE BISON
4PM	JUNGLE ROCKET

NĀ WAHINE O KA HULA MAI KA PU'UWAI
JENNY YIM
GORDON FREITAS & LOCAL FOLK
HALEIWA RED HOTS
PETER BOND HIDDEN AGENDA
MICHAEL TANNENBAUM & NICK GERTSON
MODERN LOVE FEATURING GINAI

PERFORMANCE COORDINATOR: OTIS SCHAPER

27TH ANNUAL
HALEIWA ARTS FESTIVAL
 JUNE 13 / 14 • HALEIWA BEACH PARK • NORTH SHORE OAHU • HAWAII



HALEIWA ARTS FESTIVAL
 NORTH SHORE OAHU • HAWAII • 2026

2026 Featured Artist Catie Lehman

Catie Lehman is a printmaker based on O'ahu, specializing in linocut relief prints inspired by the flora, fauna, and landscapes of Hawaii. She spent part of her childhood growing up on O'ahu's North Shore, an experience that continues to shape her connection to the islands and influence her artistic practice. Her work reflects passion in native species, landscapes, and the relationship between people and place.

After rediscovering printmaking following college, Catie was drawn to the medium's deliberative yet meditative process. A solo trip to Japan and participation in a traditional mokuhanga workshop inspired her to begin sharing her work publicly in 2023. Through bold color, layered texture, and simplified forms, her work explores themes of stillness, memory, and connection to the natural world. **PURCHASE A T-SHIRT AT THE FESTIVAL SHOP AND HAVE IT SIGNED BY CATIE!**

ONO FESTIVAL FOOD

- ALOHA & MABUHAY • CORN DOGS OF HAWAII
 CORN ONOZ • DA HUB • HOMETOWN BBQ
 HOTT POTSTICKERS • NANI'S CAFE
 OLAY'S THAI EXPRESS • SANTI'S PAELLA
 SWEET ADDICTIONS • UNCLE'S ICE CREAM
 WAIMANALO COUNTRY FARMS

KEIKI TENT

- HANDS-ON CREATIVE
 ACTIVITIES
 FOR ALL AGES!**
 KEIKI COORDINATORS:
 TINA MARKEL / CAROLINE SMITH

2026 VISUAL ARTISTS AND BOOTH NUMBERS

- | | | | |
|------------------------------------|------------------------------------|-------------------------------|--|
| A AIRA, RUBEN / B22 | F FORNEY, DANIEL / D2 | L LEHMAN, CATIE / D8 | R ROY, JACKIE / B27 |
| APPASAMY, ROBIN / C12 | FORNEY, PAUL / D3 | LONG, KIMMY / A7 | SALEHI, AIDA / B30 |
| ARNOLD, GRANT, ANGIE / E9 | FUENTES, LOPE / E10 | LUCAS, TEINA / B4 | SAWIKI, KAREN / A2 |
| BARRETT, TENILLE / D12 | GARZON, SERGIO / B12 | MCEVILLY, HANA / B28 | SCHAPER, JULIE / D7 |
| BEASLEY, CHAS / D11 | GIAMBALVO, SUSAN / B8 | MENDAME, JAIME / A4 | SCHROEDER, JULES / E11 |
| BENDO, CHRISTIAN / B17 | GILLILAND, KELSEY, JAN / E4 | MERCER, SHERA / D1 | SERAFINI, PATRICIA / B26 |
| BENNET, BECKY / D14 | GINELLA, MELISSA / B11 | MEYER, MELISSA / D15 | SEU, NICOLE / B10 |
| BENUSKA, NICK / C7 | GOKCE, UMUT / E2 | MOLINA, LINDA / B31 | SIKKINK, ANDREA / C4 |
| BLOCK, REBECCA / C8 | GOTO, KRIS / B14 | MOSC, EWA / C14 | SNYDER, MORGAN / C5 |
| BOLIOLI, EDUARDO / D9 | GUERRERO, JERRY / A1 | MOSIER, TIGER / E3 | TESTA, SABRA / D5 |
| BOLOKER, JUDD / B13 | HALL, KRISTINE / C1 | MULLIGAN, MOLLY / B25 | TOSAKI, JENNIFER / A10 |
| BRADEN, BILL / E14 | HART, AMY / B1 | MYERS, SHANE / C3 | TRICE, BOBBY / E1 |
| BROWN, MARK / C10 | HAYASHI, NAOKI / C9 | NAGLE, JAIMEE / B21 | TRUYOL, STEFANI / B3 |
| CARLSON, SCOTT, GLORIA / C2 | HAYWOOD, RYAN / E5 | NEWLIN, LORNA / E7 | VERMILLION, NICOLE / A11 |
| CHACON, YTALA / A14 | HENNALLY, DIANE / B29 | OCHOA, TANYA / A12 | WANG, GE / A13 |
| CHAYERS, ANGELICA / B19 | HESS, HAUNANI / A9 | ORTA, BRITTANY / B20 | WARSANI, FAISAL / B24 |
| CHING, COURTNEY / D10 | HONG, MIN / B16 | PA, KEALOHA / D17 | WHITTAKER, HEATHER / B18 |
| COBB, TAYLER / D4 | HOOD, RHODA / B9 | PIERCE, ROB / E2 | WILUND, BRITTANY / E12 |
| COFFMAN, MATT / A6 | HOWARD, MARK / B15 | PORTURAS, RACHEL / B23 | YASUI, GERRY / D6 |
| COX, LINDA / E8 | KEAN, STEVEN / A3 | PURE, CARLO / A5 | <input type="checkbox"/> ART OF RELAXATION / E13 |
| CUNNINGHAM, MARK / B5 | KIM, KEALA / C13 | RAGAN, ERI / B2 | |
| ELWELL, REBECCA / C15 | KING, BRETT / E6 | RATLIFF, KIMBERLY / B7 | |
| EMERY, BRIAN / C6 | KUCHAR, NICK / C11 | REYNO, KRISTEN / A8 | |
| FLORES, MOANA / B6 | LEE, JUNGEUN / D13 | RICER, SARA / D16 | |

HaleiwaArtFestival.org

Haleiwa Arts Festival
 A NON-PROFIT ORGANIZATION

**ART
 MUSIC
 FOOD
 FAMILY
 FRIENDS
 FUN &**

FREE!

JUNE 13 & 14



@Banzaibetty Press



THE PONIES ARE COMPETING

The North Shore has a beautiful site for the ponies to run at the Hawaii Polo Club. In 1963 the Hawaii Polo Club officially opened in Mokuleia. Duke Kah-anamoku ceremonially tossed out the starting ball and it was Bill Dillingham as umpire for the first horse polo games. The site is next to the ocean with beautiful views for beachside tail gating. You can watch the fast, exciting games VIP also, with reserved seating, tables for the day and club memberships. There are food vendors, a full bar and music after the awards. Gates open at 11am and first game is at 2pm. Kids are free! I have to give a shout out to Katherine Bush who played her last official game in May. She represented the Hawaii Polo Club Interscholastic Team and is now heading to college. Polo and Picnic at Hawaii Polo on June 28th; North Shore News will be there collecting back-to-school supplies for their annual Operation: Backpack campaign. See you at the games every Sunday until the season ends!



*Katherine Bush, Hawaii Polo Club Interscholastic Team
Photo @banzaibetty*

WSL QUALIFYING SERIES IN TAHITI

Tahiti became part of the Hawaii region a few years back. Hawaii's contingent traveled there to compete in the TOA Pro Punaauia 2,000 event. It was Hawaiians that took the titles. Maui's Jackson Bunch excelled over Tahiti's Matahi Drollet to claim it for Hawaii. His scores in the perfect left hand 4-6 foot surf were consistent through the event scoring a high 8.00 and a 9.77 in the final to take the win. Bunch made the big world tour and got booted back to the challenger series but is keen to qualify again. The North Shore's "Queen of Pipeline", Moana Jones Wong, was in form in the left tubes. The inconsistency of the south swell was a challenge but she beat her Tahitian opponent by 3 solid points. Aelan Vaast is quickly becoming one of the best surfers in the region so it was not such an easy final for Jones. "I'm so happy. That was such a hard final... surfing against her at home was so special," Jones Wong said. "She really pushed me and we had a really good final." Jones Wong's husband is from the area so it was another cherry on top for the leader of the ratings. There is another event there and a longboard contest. The Local Motion Surf Into Summer is coming up also here at Bowls. Check the WSL site for the schedule!



*Congratulations Waialua High Girls Surf Team, Skai Suitt
Photo @banzaibetty*



Moana Jones Wong, Pipe Photo @banzaibetty

Kahuku High & Intermediate School

Graduating Class of 2026

Adolpho-Lefau Josiah
 Afemata-Marasco Taliloa
 Afualo Lana
 Ah Quin Koi
 Ah You Micah
 Ah You Noah
 Akina Brayze
 Akina Watson Mystique
 Alo-Rosa Zennon
 Ani Dejah
 Archibald Emry
 Asifoa Terina
 Aumua Kekua
 Baker Gabreial
 Balbirona Frank
 Barenaba Amaru
 Blank Kaiden
 Bohnet Andolousha
 Bowen Zachariah
 Brenchley Luke
 Bridges George Allen
 Bright Carmenita-Gabrielle
 Bueno Leianne
 Cabael Weston
 Cambra William
 Camit-Simon Martina-Elizabeth
 Campana Tiana
 Campbell Kiamaia
 Carganillo Shayne
 Castillo Cayden
 Chamberlain Penny
 Channels Kaile
 Char Chasen
 Chun DeAngelo
 Cornwall Teagan
 Cozo Rebel
 Cravens Nahinu
 Cuellar Nyah
 Curtis Jeshua
 Davis Cody
 Dayton Mark
 Emmsley Elianeihoio
 Enesa Degan
 Enos Maillelaililii
 Erickson Kylen
 Esera Leila
 Esera Sina
 Falevai Zaylin
 Fauatea Noah
 Faustino Louis
 Feinga Aria
 Fely Kale
 Fiatoa Zion

Finau Junior
 Finau-Hernandez Shayna
 Fonoimoana Mariana
 Fonua Zareaa
 Fortuna Coral
 Fotu Milania
 Garvida II Lewen
 Glasco Sherell
 Goody Branning
 Gouveia Taylor
 Granados Mauricio
 Grant Denyelle
 Graycochea Pekelo
 Green Naki Miya
 Gruninger Gavin
 Haiola Kalena
 Hannemann Sol
 Hanohano Barenaba
 Hanohano Hayley
 Hanohano Kaluhikai
 Hao Siueli Vanila
 Harp Elizabeth Ann
 Harris Braedon
 Harrison Dallas
 Heuchling Joshua
 Hikila Sosipeta
 Hopkins Masahiro
 Horton Ah Zjah-Lynn
 Houghton Annika
 Iese Manaia
 Ili Talanoa
 Ishii Guyslyn
 James Mason
 Jichaku Rahkdy
 Jinadasa Meslin
 Joaquin Isaiah
 Jordan Natalie
 Juett Sariah
 Kahawaii-Pula Mary-Agnes
 Kahele Tylan
 Kahuena Kerah
 Kalawaia-Lindsey Uilani
 Kalili-Da Silva Kuuwehi
 Kalulu-Travis Kanaloa
 Kamai-Keawe Nekenieh
 Kamai-Keawe Ziggy
 Kamakaala Kevin
 Kamakaala Paiea
 Kamauoha Tapulaaia
 Kamelamela Malika

Kana'e-Oliveira Kalaheo
 Kaneakalau William
 Kapu Eli
 Kaufusi Pita
 Keanu Aylana
 Kelihoomalua Teiana
 Kester Tosh
 Kimak Thomas
 Kimball Jackson
 Kruse Tauavae
 Kruse Vincent
 Larson Tayden
 Latuselu Ilah
 Lauaki Marania
 Lauaki Taylor
 Lauaki Tipanie
 Lauingoa Elenoa
 Lauingoa Lamona
 Lefau Tezel
 Leger Rachael
 Leonardi-Nicodemus Jayda
 Lerner Kea
 Lewis Isaac
 Lin Sean
 Lopes Lyriq
 Malufau Matai
 Manutai Kawanakini
 Mapu Eyring
 Marasco Treasure
 Mariteragi Hirirau
 Mariteragi Troy Douglas
 Marlowe Abby
 Martinez Miranda
 Matau Tautafa
 Meneses Mikayla
 Meredith Adruen
 Meyers Audry
 Meyers La'anui
 Moeai Taea
 Morgan Jaysen
 Morris Daniel
 Naeata Kyzyn
 Nakaahiki-Bourgeois Kanon
 Nakoia Kanoa
 Nautu Avanoa
 Nautu Manavaalea
 Neel Jessica
 Nihipali Kulia
 Niu ShaDen
 Obina-Kaneakalau Ualani

Paakaula Chantilly
 Paoao Uilani
 Paialii-Tuia-Sii Maataua
 Palolo Brody
 Pascua-Alfanta Leiana
 Peters Mellania
 Phung Julia
 Porter Savannah
 Portugal Isabel
 Prow Leopold
 Pula Stanlyn
 Pule Taimua
 Rabaino Michelle
 Ramos De Oliveira Arthur
 Ramos-Helms Kekoa
 Razo Gutierrez Tyrek
 Reyes Elaine
 Rich Kailani
 Rillamas Jayda
 Rogers Lia
 Sandoval Leah
 Sanford-Tupuola Christian
 Sayles Keola
 Sika D'Zynnah
 Silva Rochelle
 Siuloa Efren
 Skinner Aiden
 Skinner Kreed
 Smith Eden

Soliai Madden
 Soliai-Tui Jonah
 Spurrier Kamanamau
 Strain Mindy
 Sundby Savannah
 Taeu Melia
 Taggart Lance
 Tagoai Enjoli
 Taosoga Safiya-Matia
 Tauiliili-Moeai Soatogi
 Taumoepeau Ofa
 Thomas Jackson
 Timario Mason-Sky
 Timothy Benjamin
 Tipoti Taiana
 Togiai Dereck
 Tollefsen Helaman
 Tonga Tilauana
 Tootoo Kyra
 Tserennyam Enerel
 Tsing Benjamin
 Tuifua-Seui, Jr. Halafili
 Ueni Fouvale
 Ueni Norahmaree
 Uluave Selafina
 Uluave Shalye
 Vaiaoga Noah
 Vansteenkiste Sawyer
 Vellmure Tavita

Vierra Nadiya
 Vimahi Taliauli
 Visaya Tyronne
 Wayas-Heffernan Jrae
 Wayas-Heffernan Najzhe
 Welling Kamryn
 Wilson Kairah
 Wineera Hineira
 Wohler Noah
 Yeates Joseph
 Yokoyama Payton
 Yu Andrew
 Waiwaiole Kairry



From our Ohana to Yours!

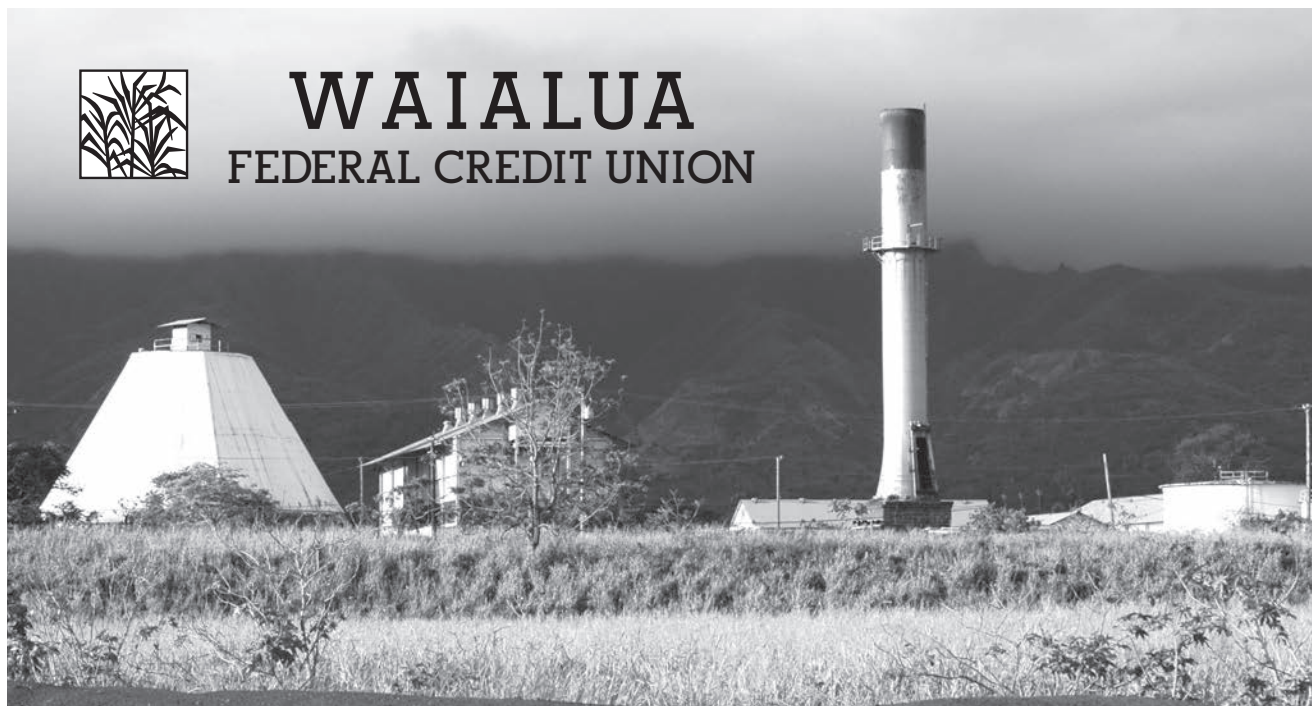
KAHUKU
 56-505 KAMEHAMEHA HWY
 KAHUKU, HI 96731

HALEIWA
 66-472 KAMEHAMEHA HWY
 HALEIWA, HI 96712

HONOLULU
 458 KEAWE ST. 2ND FL.
 HONOLULU, HI 96713



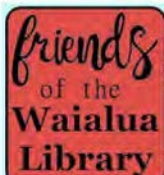
WAIALUA FEDERAL CREDIT UNION



Serving the North Shore Community

www.waialuafcu.com
(808) 637-5980

- SAVINGS
- CHECKING
- LOANS



67-068 Kealohanui St, Waialua, HI 96791
FriendsOfWaialuaLibrary@gmail.com
808-637-8286

Readers' Group
Thursday, June 25, 9:30 -11am
Title: "My Friends" by:
Fredrik Backman

Writers' Group
Thursday, June 11, 9:30 -11am
Topic: "A friend you love"

Family Story &/or Craft Time
Saturdays, 10am

"Neighborhood Security Watch Program" Saturday June 6, 11am

Next Book Sale
Saturday, July 18, 9am-12pm



Waialua Bandstand
Presents

Royal Hawaiian Band
Sunday, July 5, 4pm

*2026 WHIS Scholarship Recipients:
Moorea Dominique and
Carter Hewitt. Congratulations!*



Congratulations!

On behalf of the teachers and staff here at Sunset Beach Elementary School, we would like to congratulate all of our 6th grade students on their graduation! We are so proud of the work they accomplished, all the way from Kindergarten to 6th Grade. We have seen them grow academically, socially, and emotionally. We are confident they are ready for middle school, and we can't wait to see what amazing things they will do in the future. We hope they will always remember to "unleash their inner shark, and achieve their goals!" Go Sharks!

BULLETIN BOARD

N-C PLUMBING & SUPPLY

Cont. Lic. No. C-8913



- RESIDENTIAL & COMMERCIAL SALES & SERVICE
- CONTRACTING & DESIGN
- HOME PLUMBING SERVICE
- PLUMBING FIXTURES, HEATERS • FREE ESTIMATES

Nestor P. Calilao (Owner)
P.O. Box 769
Waialua, HI 96791

Business: (808) 637-8662
Cellular: (808) 372-8718

World Class Notary

Based in Waialua, HI

- NOTARY
- FINGERPRINTING
- APOSTILLE
- BACKGROUND CHECKS
- IN HOUSE PARALEGAL
- TRANSLATION SERVICES

(808)489-6900

WAIALUA FARMERS MARKET

OAHU'S ONLY MEMBER-RUN MARKET

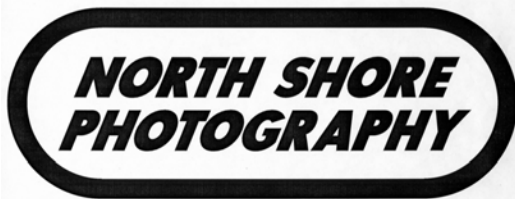
Fresh produce • handmade goods • live music • community

SATURDAYS 8:30 AM - 1 PM

Old Waialua Sugar Mill | @waialuafarmersmarket



Congratulations Class of 2026!



HALEIWA, HAWAII

Over 50+ Years of Professional Services and Historic Images to the Community. AKA "Nostalgic Photos Hawaii" To See 1000+ Images Search: northshorephotohawaii.com

PET SUPPLIES NEEDED

for those impacted by the flooding in Waialua

- Igloo-Style Pet Homes • EZ-up Tents
- Plastic Totes/Bins • Tarps • Leashes
- Collars • Bowls • Pet Food & Treats

Email rescueoahu@gmail.com to coordinate drop-off in Waialua.



Congratulations to the 2026 Kahuku and Waialua Graduates



Photos & Press
Commercials, Video, Radio & Media
Special Rates on FIHi Girls TV
25 yrs. experience
808-781-2535



Would you like to receive the North Shore News via email **FREE** and in **COLOR**? Just send us a message at: NSNHaleiwa@gmail.com



Available at:
Surf n Sea
and
North Shore Surf Shop!

www.Beatniktrading.com

Affordable Rx

KHC's Kahuku pharmacy is open to everyone.

No Insurance? No Problem!

You may be eligible for discounts & sliding scale pricing.

Give us a call at 293-9231 or stop by to inquire.



koolauloachc.org

**1893 - 1971
KAHUKU SUGAR MILL**

*Kahuku
Community
Association*

**Congratulations Kahuku High
Class of 2026!**

**Congratulations
Waialua High
Class of 2026!**

Wherever your journey takes you next, always carry that deep North Shore pride in your heart. You come from a community that is resilient, tight-knit, and incredibly proud of you. Bring your unique aloha to the world, and remember you always have a home here. Go Bulldogs!

— The Waialua Community Association

f @northshorehanapaa @northshorehanapaa

**2026
NORTH SHORE
HANAPA'A**

Jackpot Tournament

HALEIWA, HAWAII

© 2016, HANAPA'A JACKPOT FISHING CLUB

**HALEIWA SMALL BOAT HARBOR
JUNE 26TH & 27TH, 2026**

NSHJTournament@GMAIL.COM

Follow us for more info!



How Can You Help?

Sponsor a new backpack loaded with school supplies needed for each grade (K-12).

This year the Operation: Backpack team will be working with the area schools to distribute backpacks. Organizations and businesses interested in sponsoring backpacks or school supplies please contact North Shore News.

We accept monetary donations: North Shore News or Once A Month Church PO Box 117, Haleiwa, HI 96712 For more information or credit card, online and venmo donations call Linda at (808) 780-8037

Sponsored by North Shore News, Once A Month Church and the North Shore Community

Donations Drop-Off Operation: Backpack at Hawaii Polo Sunday, June 28



Mahalo North Shore Food Bank volunteers from Waialua High & Intermediate School, Avid Club and National Honor Society students Photo NSFB

Congratulations to all the Graduates Class of 2026!

The North Shore Food Bank would like to recognize the Waialua High School student volunteers - National Honor Society Valedictorians:

Sandrine Frances Agtarap, Paetyn Amper, Kacie Baguio, Yasmin Canfil, Veronica Carroll, Kitty Cavan, Ariana Dicion, Rhianna Dingal, Moorea Dominique, Ken Guzman, Asia Macatiag, Hannah Placido, and Evangeline Shriver-Kealoha

Presented by the Hawai'i State Public Library System

e hehuhelu kākou
2026 SUMMER READING CHALLENGE

UMEKE KĀ'EO
JUNE 1 - JULY 31

For more information, go to: librarieshawaii.org/summerreading

Hawai'i State Public Library System

Logos for: Friends of the Library, Hawaii State, Alaska Airlines, Hawaiian Airlines, B.M. Terrell Corporation, McDonald's, Pizza Hut, Hansen, CDHMSHost, The Hillyard Family Working Foundation, The Gail UrAGO Memorial Fund, ZIPPY'S

NORTH SHORE FOOD BANK

IG: @nsfoodbank
Sponsors: Hawaii Food Bank & Aloha Harvest

DISTRIBUTION UPDATE



3rd Wednesday of the Month at Kaiaka Bay Beach Park

Wednesday, June 17, 12 noon

Wednesday, July 15, 12 noon

Visit us at the WCA every 4th Wednesday of the month 10am-1pm

For more information and donations contact :
Linda (808) 780-8037



CLASSIFIEDS

The North Shore News is published every four weeks and available at area businesses and locations. Digital copies are emailed in color. The North Shore News is also available by mail subscription.

PRESS RELEASE POLICY: Submit press releases, email to the Editor. Releases should be viable news stories or human interest stories and are published on a space available basis only. You may attach photos. We reserve the right to edit and/or refuse all submissions including advertising.

EDITORIAL POLICY: The North Shore News is a community paper. We welcome articles, pictures and Letters to the Editor.

CLASSIFIED AD RATES: Classified ad rates are \$6.00 per line with up to 27 characters per line. The box ads are \$40.00 per column inch. Submit classified ads by email. Phone calls are always welcomed.

Views expressed by our contributing writers and advertisers do not necessarily reflect the view of the management and staff of the North Shore News. All rights reserved. Reproduction in a whole or part without permission is prohibited. 2026

Editor & Classifieds

Linda Seyler

Typography

Downtown General Store

Contributing Writers

Betty Depolito

Noah Grodzin

Councilmember Matt Weyer

Representative Amy Perruso

Penny Nakamura

Photography

Banzai Productions

Bill Romerhaus

North Shore Photography

SERVICES

LegaSea Energy Solar

Christensen Bros.
Construction Inc.
since 2005

Specializing in off grid livin'
Custom homes
License BC 27977 -
808-351-4657
@legasea_energy

LOCAL AUTO BODY & PAINT

Call Rick Estrada
(808) 216-9419

DUMP RUN on the North Shore
Call (808) 216-9419

Waihuena Farm North Shore Goat Dairy Share

Pick Up Tues 12-6
Across from Pipe
waihuenafarm.com

ANGELS PLUMBING
Repairs
Remodeling
Renovation
808-220-7878
Lic. #C12004

FREE ADS

Garage & Yard Sales,
Reunions, Lost & Found.
Email ad to:
NSNHaleiwa@gmail.com

PONO FIT CO.

New Gym in Haleiwa
Memberships & Day Passes
Personal Training
Fitness Classes
808-970-4969
66-437 Kam Hwy

TAI CHI

Free Classes
Waialua Community Asso.
Hale'iwa Gym
Mondays and Wednesdays
9:30am - 10:30am
For info: 808-489-5426

Residents are encouraged to stay informed by signing up for **HNL Alert** for updates on City services and resources. Visit hnlalert.gov or text "HNLALERT" to 888-777 to receive alerts.

Paumalu Electric Inc.

new construction,
remodels and rewiring,
service and repairs.
Lic. C-18074 808 638 9054

Retired General Contractor

30 plus years -Specializing in home and structural repairs, fencing, painting and more.
Gregg Biemann
808-778-0234

Celestia Cafe "Nourish & Go"

Organic prepared foods,
organic smoothies,
wraps, protein bowls,
daily specials.
Located in the back of
Celestial Natural Foods

GERMAN CAR SERVICE

Professional-Qualified
Technician
Call Gary
637-6800

FREE NOTARY SERVICES

In light of the current flooding from the Kona Low Storm, I'm offering FREE Notary Services for anyone dealing with flood-related damage or disaster relief claims. If you need documents notarized, I'm here to help! Please Call or Text Kathrin Delano at **(949) 412-8837**

SALSA BACHATA

Dance Studio on the North Shore
"If you are alive, you can dance"
Contact "Salsa Marina"
808-219-4092
@northshoresalsabachata
DM/Text for questions

BUSINESS SERVICES CENTER

Fast & Convenient Copy, Fax, Scan, Computer/Internet, Laminate, & More



Across from the Haleiwa Post Office

637-4558 • gonorthshore.org
#gonorthshore

Request a Service. Report an Issue, and Help Improve your Community!

HNL 311 is the official mobile application for the City & County of Honolulu. Report potholes, broken streetlights, cracked sidewalks, illegal dumping and more via your smartphone.

HOW TO CONTACT THE NORTH SHORE NEWS

Letters to the Editor, and other items submitted for publication consideration may be sent to us via:

MAIL: P.O. Box 117, Hale'iwa, HI 96712

E-MAIL: NSNHaleiwa@gmail.com

NSN4Linda@gmail.com

PHONE: (808) 780-8037

www.northshorenews.com



Please recycle this newspaper.

CLASSIFIED ADS

Next Issue - July 3, 2026
Deadline Date - June 17, 2026

Would you like to receive the North Shore News via email in COLOR!
Just send us a message at:
NSNHaleiwa@gmail.com

OFF da ISLAND
Are you leaving Oahu on vacation or business? Do you live on a neighbor island, the mainland or foreign country and subscribe to the NSN? Send us a photo with someone in front of a sign or landmark holding a copy of the NSN or send a photo without the NSN. Email your photo with a caption including names, place of residence and photo location.
NSNHaleiwa@gmail.com

Tutu's Treasures Thrift Shop
in Hauula is open every Wednesday and Friday from 9-11:30am
Donations accepted during business hours.
For info call Ella 808-778-0086

FREE ADS
Garage & Yard Sales, Reunions, Lost & Found.
Email ad to:
NSNHaleiwa@gmail.com

FREE PALLETS
(808) 780-8037

Drug Problem? Call Narcotics Anonymous 808-734-4357
Meeting 7pm Mondays
Cottage 2 behind Waiialua Community Asso.
66-434 Kam Hwy Haleiwa

North Shore Food Bank
IG @nsfoodbank

HELP WANTED

Household Help
Beachfront Estate
16 hours per week
808-637-0808

MATSUMOTO SHAVE ICE
Now Hiring!
Apply in person daily
10am - 6pm
808-637-4827

MISCELLANEOUS

North Shore Country Market is back!
Wednesdays, 1pm - 5pm at Liliuokalani Church in Haleiwa.
Organic produce, local artisans, live music and free parking.

ST. MICHAEL SCHOOL Registration Now Open 2026-2027 School Year
Ages 2.5 - 6 years
For information:
808-637-7772
info@stmichaelschoolhi.com

HISTORICAL TOURS
Walking tours of historic Haleiwa and Waiialua Town by local historian
\$20 by appointment
808-342-8557
info@waiialuahistoricalociety.org

ST. MICHAEL PRE-SCHOOL Summer Program
June 8 - July 17
Ages 2.5 - 6 yrs
For more information call 808-637-7772
info@stmichaelschoolhi.com


Congratulations!
Pulelehua Critchlow
Hanalani School

RENTAL WANTED
Single, mature female seeking Ohana unit for July or August. Walking distance to beach hopefully.
\$2300 max.
Please email
pattinew25@gmail.com
or call 480- 549 -6023

North Shore Serenity Al-Anon Family Group
meets 6:30 pm Wednesdays at St. Michael's Church, Outreach Room, 67-340 Haona St, Waiialua. Participants may also attend virtually via Zoom ID 84783266578 Password 809980.
Open to anyone who believes his or her life may have been affected by someone else's drinking.
Additional information available at www.al-anon.org; or by calling 808-546-5647

North Shore Service Center 4th Wednesday Every Month 10am - 12:30pm at the WCA (Hale'iwa Gym) Wednesday, June 24
Please Join Us!
All are welcome!
Assistance in housing, medical, dental and fellowship by: North Shore Food Bank, Ko'olauloa Health Center, Ke Ola Mamo, U.S. Vets, and Keiki O Ka 'Aina, SNAP and more...
To join us as a provider or for more information call Linda 808.780.8037

West Oahu County Farm Bureau Meeting
Wednesday June 3rd, 6:00 pm
Waiialua Elementary School Cafeteria
Anyone interested in agriculture is invited to attend. Please RSVP
808-277-8987

Coconut Rhinoceros Beetle response:
for info visit hdoa.hawaii.gov/pi/main/crb/
email: BeetleBustersHi@gmail.com
phone: (808)643-7378
call or text: (808)678-5244

Hawai'i Statewide Marine Animal Stranding, Entanglement, and Reporting Hotline
Includes stranded/injured sea turtles, monk seals, dolphins, and whales.
Phone: (888) 256-9840

Haleiwa Town Center Office Space for Lease
Convenient location near Stonefish, Jorge's, Longs, Bank of Hawaii, and American Savings Bank.
808-637-8000

Multi-Family Yard Sale:
Furniture, tools, handicrafts, collectibles.
June 6th & 7th
59-466 Pūpūkea Road
Text:3214315763 Mahalos!

KauKau 4 Keiki
Hawaii Foodbank provides nutritious meals to children during the summer break.
To register go to: hawaiiifoodbank.org/kaukau
Waiialua United Church of Christ
Mondays, 4 to 6pm
Kuilima Farm
Tuesdays, 9 to 11am
Waiialua Community Association
Thursdays, 3 to 5pm
Kokololio Beach Park, Hauula
Thursdays, 9 to 11am

Summer Horse Camp Enrolling Now!
Fun-filled days of riding, horse care, grooming, and barn activities for all experience levels. Safe, hands-on, and perfect for young horse lovers!
Ages: [5-16] •
Dates: [June 15-19, 22-26 / July 20-24, 27-31] •
[Dillingham Ranch]
Limited spots available!
Call/Text: [808.356.9095]


Congratulations!
David Dicion
Leilehua High School

Annual
HALE'IWA
4th of JULY
Celebration

AMERICA
250
1776-2026
★★★

TOGETHER
WE HEAL
STRONGER
TOGETHER
NORTH SHORE

★ SATURDAY, JULY 4, 2026 ★
HALE'IWA, O'AHU

Celebrate America's
250th
Anniversary
WITH THE NORTH SHORE COMMUNITY!

FAMILY-FRIENDLY FUN
FOOD VENDORS
LIVE ENTERTAINMENT
KEIKI ACTIVITIES
CAR SHOW
HOT DOG EATING CONTEST
FIREWORKS

HISTORIC HALEIWA
LOCAL GRINDS

LIVE MUSIC

NORTH SHORE
ALOHA
STRONG HEARTS
STRONG COMMUNITY

HOSTED BY THE NORTH SHORE CHAMBER OF COMMERCE
WWW.GONORTHSHORE.ORG