



"E Ala Na Moku Kai Liloloa"

HALEIWA ARTS FESTIVAL

JUNE 21 / 22 • HALEIWA BEACH PARK • 10am - 5pm

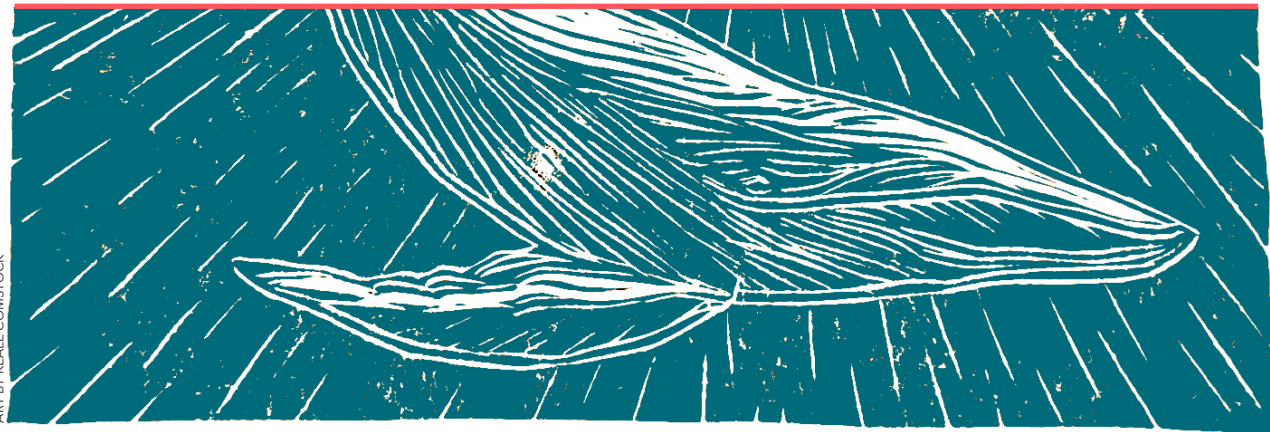


Haleiwa Arts Festival
A NON-PROFIT ORGANIZATION

NORTH SHORE NEWS June 4, 2025 VOLUME 42, NUMBER 6



HALEIWA ARTS FESTIVAL



ART BY KEALE COMSTOCK

2025 Featured Artist Keale Comstock

North Shore-based artist Keale Comstock is inspired by land and ocean. It shows in his work which captures impressionistic landscapes and still life in many forms. Mostly self taught, he uses skills learned in art classes and in making ceramics. His mediums in addition to clay, are pen, pencil, pastel, gouache, oils, acrylics, wood and lino carvings. He is passionate about nature and especially the ocean, where he spends a lot of time surfing or swimming. Born and raised in Ocean Beach, San Francisco and Marin County, Keale now finds his home on the North Shore of O'ahu.

Purchase a Tote Bag at the Festival Shop and have it signed by Keale!



For over a quarter-century, the Haleiwa Arts Festival has been a vibrant celebration of creativity, culture, and community. As we embark on our 26th year, we invite you to be part of this inspiring tradition by joining us at Haleiwa Beach Park on **Saturday, June 21 and Sunday, June 22.**

This non-profit event showcases the talent of local artists and provides a platform for them to share their work with the community. Visitors can explore the artist booths, enjoy live performances, enjoy local flavors and immerse themselves in the rich creative experience of Hawaii.

Learn more at HaleiwaArtFestival.org

Surf N Sea
CONGRATULATIONS to the Class of 2025!

A special shout out to
Enzo Rose

It's been a joy watching you grow into such a great young man. Congratulations on this incredible achievement! We're so proud of you and can't wait to see all that's ahead in this next chapter.
 --The Surf N Sea 'Ohana

CONGRATULATIONS
AND BEST WISHES,
6TH GRADERS!!

♥ **HALEIWA ELEMENTARY**
FACULTY AND STAFF



Sheri Yamauchi from Haleiwa Jodo Mission presents WHIS 2025 graduate Ethan Pascual with the Marion Masae Kawamura Scholarship

TUESDAY MARKET WAIALUA PRESENTS

4 AMERICA
Celebration

JULY 1st 2025
 3 PM - 7 PM
 (RACES START AT 4PM)

FEATURING FUN COMPETITIONS (AGES 4 TO ADULT), SUCH AS HULA HOOP, POTATO SACK RACE, PIGGY BACK RACE, AND MORE!
 WINNERS TO BE AWARDED!
 ENTERTAINMENT
 30+ FOOD AND CRAFT VENDORS

WE ARE ALSO COLLECTING DONATIONS ON BEHALF OF THE NORTH SHORE FOOD BANK!

FACEBOOK/INSTAGRAM @WAIALUAUCC @NSFOODBANK
 WAIALUA UCC 67-174 FARRINGTON HWY WAIALUA, HI 96791

THIS IS AN ALCOHOL-FREE AND DRUG-FREE EVENT

MOVIE NIGHT ON THE LAWN
 NOW PLAYING: "LETTERS TO GOD"
 A FREE SUMMERTIME MOVIE NIGHT PRESENTED BY THE WAIALUA UNITED CHURCH OF CHRIST

SATURDAY JUNE 21, 2025 - 6PM TO 10PM
 WAIALUA UNITED CHURCH OF CHRIST LAWN
 67-174 FARRINGTON HWY - WAIALUA, HI

MOVIE STARTS AT 7:30 PM
 FOOD & CONCESSION SALES WILL BE PROVIDED BY WUCC YOUTH GROUP AND LOCAL COMMUNITY GROUPS
 COME AND SUPPORT THEM!
 FREE ENTRY!
 BRING YOUR OWN CHAIR & BLANKET!
 BRING YOUR FAMILY & FRIENDS!

THE MOVIE IS RATED "PG". THIS IS AN ALCOHOL-FREE & DRUG-FREE EVENT. FOR MORE INFO, VISIT WAIALUAUCC.ORG OR FOLLOW US ON INSTAGRAM/FACEBOOK AT @WAIALUAUCC



SUMMER CONCERT SERIES

SATURDAYS, 2 PM
ON THE MAIN LAWN

HOSTED BY
KIMO KAHOANO



TICKETS

**JUN
28**

KALAE PARISH & KALENA KŪ
AMY HĀNAIALI'I
JERRY SANTOS
KANANI OLIVERA HULA STUDIO WAHIAWA

**JUL
26**

KAINANI KAHAUNAELE
KALAE CAMARILLO
HO'OKENA FEATURING MOON KAUAKAHI
NANI DUDOIT & HĀLAU KALEILEHUAIKEALOONĀLANI

**AUG
30**

PŌMAIKA'I
HAWAIIAN STYLE BAND
"KUMZ" & HĀLAU I KA WĒKIU
KUMU LILINOE LINDSEY & KA PĀ NANI 'O LILINOE

TICKETS: WAIMEAVALLEY.NET

**SERIES AND INDIVIDUAL PASSES AVAILABLE
SERIES PASS: ADULT \$50, KEIKI/SENIOR \$40
FREE FOR KEIKI AGE 3 AND UNDER!**



EXTENDED SUMMER HOURS
OPEN DAILY, 9 AM - 5 PM

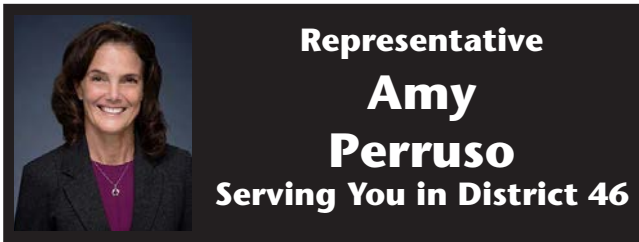
HULA IN THE VALLEY
EVERY SATURDAY, 11 AM & 1 PM

@WAIMEAVALLEY

@WAIMEAVALLEYOAHU

WHERE HAWAI'I COMES ALIVE

WAIMEAVALLEY.NET



**Representative
Amy
Perruso
Serving You in District 46**

A Special Session Call to Action for the North Shore

For decades, Hawaii's people have worked hard to hold their local and state elected officials accountable for treating education, health care and environmental stewardship as sacred trusts. Today those pillars are under threat from a new federal administration that is trying to balance its books on the backs of working families. Congress is racing to pass a budget that would slash \$12 billion from our local K-12 programs, shrink Pell Grants necessary for our young people to get a high education, and gut Federal Work-Study, while consolidating special-education dollars into a block grant that can be raided for other purposes. At the same time, GOP House leaders are advancing a bill that could kick more than 13 million Americans off Medicaid by adding harsh work-reporting rules that have already failed in states like Arkansas.

Anti-hunger work is also on the chopping block, too. The same budget tightens Supplemental Nutrition Assistance Program (SNAP) waivers, forcing adults to document 80 hours of work or lose food benefits after three months—even in counties where jobs are scarce. And just last month, FEMA announced it is canceling the entire Building Resilient Infrastructure and Communities (BRIC) program, yanking away \$750 million a year that states had counted on for flood-control, wildfire-mitigation and coastal-protection projects.

What does all that mean for the North Shore? Start with our classrooms. Title I dollars pay for reading coaches at Waialua Elementary, counsellors at Hale'iwa, and after-school tutoring across the Central O'ahu complex. If Washington follows through on these threatened cuts, the Hawai'i Department of Education estimates it would lose the equivalent of more than 300 teaching positions statewide—roughly the staff of every public school between Hale'iwa and Kahuku. Medicaid pays for one in three keiki statewide to see a doctor; in Waialua and Wahiawā the share is even higher. Strict work requirements sound reasonable until you realize many parents here patch together multiple part-time jobs. The paperwork burden alone could shove thousands off the rolls and push our emergency rooms past capacity. SNAP, meanwhile, puts groceries on the table for nearly 9,000 North Shore residents each month; when those benefits disappear, the line outside the food bank grows overnight.

Climate resilience may feel abstract until the next north swells sweep a house into the ocean or heavy rains overflow Kaukonahua Stream. O'ahu counties had BRIC applications pending for culvert upgrades, firebreaks

and reef restoration. Those proposals are now in limbo, forcing the state to decide whether to backfill the loss or leave our coast more vulnerable.

That is why legislative leaders are preparing for an unprecedented fall special session. Our agenda is threefold: first, to backstop critical dollars in public education, Medicaid and SNAP so no family is left behind; second, to seal the revenue leaks by closing the corporate worldwide reporting loophole, restoring a fair tax on capital gains and creating a modest new top income-tax bracket—reforms that together could raise more than \$1 billion a year; and third, to fast-track a Hawai'i Resilience Fund that will keep climate safety projects alive while we litigate FEMA's decision and hunt for alternative federal grants.

Success depends on community muscle. Testimony—both written and in-person—moves votes, and the Capitol's online portal makes it easy to share your story of an overcrowded classroom, a Medicaid paperwork maze, or a washout that threatens the road that enables you to go back and forth to work every day. Physical presence carries its own power; every North Shore resident who sits in a committee room signals that our district is paying attention. Between hearings, pick up the phone or send an email asking each of your elected officials to pledge publicly that they will protect schools, health care and the 'āina during the special session; then share their responses on social media so neighbors know who is standing tall and who is ducking. Finally, volunteer with local advocates—Hawai'i Appleseed, Hawai'i Children's Action Network, Sierra Club O'ahu—who are organizing testimony submission, phone calls to legislators and data dives to keep the pressure on.

Special sessions are rare, and that's the point. When federal policymakers abandon their duty, Hawai'i must step up. If we meet this moment together—speaking out, showing up, and refusing to accept false choices between balanced budgets and caring for each other—we can use this moment to strengthen our North Shore community. See you at the Capitol.



SCC Chair Raquel Achiu and Rep. Perruso honor WHIS Band Director Ian Cablay for his selection as 2025 Teacher of the Year for the Leilehua-Miilani-Wahiawā Complex Area at the recent Aloha Concert.



Congratulations!

"We would like to congratulate all of our 6th gradesharks on their graduation from Sunset Beach Elementary school! We are so proud of you, and can't wait to see what you will do as you move forward with your education. We hope

you always remember your time in elementary school. Keep up the great work, and GO SHARKS!"
Principal Eliza Elkington

Hawaii Rotary Youth Foundation Awards \$5,000 Scholarship to a Deserving Student



This year, the Rotary Club of Wahiawa-Waialua selected their top Hawaii Rotary Youth Foundation (HRYF) Scholar, homeschooled senior, Marcus Isfan. Marcus is a second-generation Romanian, who speaks a little Romanian! Marcus will be attending the University of Alabama, where he will be majoring in medicine. He has a desire to become a physician, "To serve my community as a physician" a desire that, "comes from a combination of personal experiences and a desire to serve others." Marcus is the first homeschooler to be awarded an HRYF scholarship. Marcus shared that his best-loved Bible passage is, "I can do all things through Christ, who strengthens me." Philippians 4:13. It is what gives him strength and courage to make it through each day.

He has a desire to become a physician, "To serve my community as a physician" a desire that, "comes from a combination of personal experiences and a desire to serve others." Marcus is the first homeschooler to be awarded an HRYF scholarship. Marcus shared that his best-loved Bible passage is, "I can do all things through Christ, who strengthens me." Philippians 4:13. It is what gives him strength and courage to make it through each day.

Waialua Bandstand
Presents

Royal Hawaiian Band

Sunday, July 6, 4pm

2025 WHIS graduates received the Waialua Bandstand Scholarship: Ethan Pascual, Lucile Williams and Payton Wood. Congratulations!



Congratulations
Graduating Classes of 2025!
Best Wishes from Giovanni's
Kahuku - Haleiwa - Kakaako



SPECIAL ANNOUNCEMENT
Coming Soon, Cakes and Pies will be arriving again after a long absence of our Head Baker

Starting next week, our popular assorted pies will be displayed on weekdays and our uniquely flavored cakes will be featured on the weekends.
Birthday Cakes will be available by way of phone orders with special discounts.

- PIES:** Apple, Pumpkin, Custard, Peach, Banana Cream, Blueberry Cream
- CAKES:** Chantilly, Peach Bavarian, Chocolate, Butter Nut, Banana, Pound

Phone Orders:
(808) 637-9795

Be sure to sign up for our PKB daBest VIP Card to save on every purchase!
www.pkbsweets.com

Replanting the Past to Protect the Future: Areté Collective's Plan to Turn the Tide on Shoreline Erosion at Turtle Bay Resort

Presented by Areté Collective

Over two-thirds of the beaches on O'ahu and across Hawai'i are threatened by worsening erosion caused by man-made changes to our oceans and shorelines.



Areté Collective is partnering with respected local experts to address this critical issue on its property at Turtle Bay Resort. By implementing the state-approved Forestry Management and Dune Restoration Plan, Areté is committed to supporting a more resilient shoreline.

One such expert is Henry Fong: a native plant specialist and kuleana landowner related to the area's konohiki. He recalls the profound significance of this place, which he learned throughout his upbringing, and the instrumental role he now plays in propagating various indigenous species to reintroduce them to the area underscores his deep connection to the land.

"As a young kid growing up, we would pack lunch and head out to Keiki Pond to enjoy the day swimming and picnicking with our entire family, cousins, aunts, uncles and grandparents," Henry recalls. "But as I got

older and involved with the resort, I started to learn the history and kuleana that connects me to the land, and I became aware that I am a lineal descendant of this land. That's why this place is so special to me."

As a lineal cultural descendant, Henry's kuleana and cultural expertise inform his critical guidance of the efforts to restore the coastline and protect its ecological integrity, ancestral sites and the living traditions that sustain the community's connection to place.

Areté is also working with Hui Kū Maoli Ola, a native plant nursery with a long history at Turtle Bay. They are assisting with clearing invasive ironwood trees from the property. These trees fail to keep sand on the beach as native shrubs and grasses once did and shed toxic needles that prevent healthy biodiversity.



Once clear, a curated palette of native plants is returned to the land, including kou, milo, hala, 'ilima papa, 'āweoweo papa, pā'ū o hi'iaka, pōhuehue, 'ahu'awa, nanea, 'akululi and naupaka. These various plants form a diverse ecosystem that effectively fortifies the dunes, improves sand retention and prevents erosion — all while giving a snapshot of the shoreline a thousand years ago.

"This will be like stepping back in time, as far as what a pristine coastal ecosystem looks like in Hawai'i," said Matthew Schirman, Co-Owner of Hui Kū Maoli Ola Plant Nursery. "At the end of it, the environment will be a healthier place from an ecological perspective."

By taking action, Areté Collective hopes to turn the tide and renew the health of the beaches and shorelines at Turtle Bay Resort so they can continue to be enjoyed by future generations. Each section of restored shoreline, with new native plants and healthy sand dunes, will create new habitat for endangered species and make the coastline more resilient and less prone to erosion. To learn more about Areté Collective's vision for stewardship, visit www.oahu-arete.com.

SEE YOU THURSDAY AT THE FARMERS MARKET



FarmLovers Market Hale'iwa

Thursdays 3PM-7PM

Waialua Community Association /
Hale'iwa Gym

66-434 Kamehameha Highway



**NEW
SUMMER
HOURS
3PM-7PM!**

FARMLOVERSMARKETS.COM

Hawaii's Best Mexican



Restaurant & Margarita Bar

**CONGRATULATIONS
TO ALL NORTH SHORE SENIORS!**

Let Cholo's Catering bring the fiesta to you!

For Extra Special Events
Rent the Cholo's Wagon!

Kama'aina rates and custom pricing on request.

Open Everyday 9:30am-9:30pm Happy Hour: 4-6pm M-F (Food & Drink Specials)



North Shore Marketplace, Haleiwa
637-3059 www.CHOLOS.mx



INTRODUCTORY OFFER!



**Special discounts for pies
Buy 2 for a discount of 15%**



**Discount for
birthday cakes
will be 20% OFF
and 10% OFF on
all other cakes**

Offer valid from June 4 - 17, 2025. This offer cannot be combined with other promotions or DaBest VIP card discount.



**Phone Orders:
(808) 637-9795**

Be sure to sign up for our
PKB daBest VIP Card
to save on every purchase!

www.pkbsweets.com



Ask the Doctor

Nash Witten, MD

Dear Doctor, "How can we relieve arthritis besides taking Aleve?"

Yes, there are many evidence-based recommendations for managing arthritis beyond NSAIDs like Aleve! The American College of Rheumatology and the Arthritis Foundation released a guideline for the management of osteoarthritis of the hand, hip, and knee in 2019 that found evidence to "strongly recommend" a number of non-medication treatments.

For hand arthritis, this group found strong evidence to recommend exercise (e.g., physical or occupational therapy) and self-management programs (e.g., therapy). The group moderately recommends acupuncture, kinesiotaping, hand orthotics, and heat or cold therapy.

For knee arthritis, this group found compelling evidence to recommend exercise, weight loss, self-management programs, tai chi, knee braces, and the use of a cane. The group moderately recommends balance training, braces, acupuncture, heat or cold therapy, and nerve ablation.

For hip arthritis, this group found strong evidence recommending exercise, weight loss, self-management programs, tai chi, and the use of a cane. The group moderately recommends balance training, acupuncture, and heat or cold therapy.

This group recommends against using some common remedies for arthritis treatment, including glucosamine, chondroitin, topical capsaicin, fish oil, vitamin D, modified shoes, massage therapy, and shoe insoles, among other medically prescribed treatments.

As for oral medications, this group recommends that oral NSAIDs (e.g., naproxen, ibuprofen) and topical NSAIDs (e.g., diclofenac) have the most effectiveness. Acetaminophen (e.g., Tylenol) and duloxetine (e.g., Cymbalta) also show moderate evidence of effectiveness. I'd recommend asking your primary care physician what they'd suggest for managing your arthritis, since some of these medications can be dangerous, depending on your personal medical history.

Dr. Nash Witten is a Board-Certified Family Medicine physician at Queen's Health Care Centers, Hale'iwa. The clinics are accepting new patients. Call 808-691-8501 to schedule an appointment. Submit questions to the doctors at nsnaskthedoctor@gmail.com.

Dr. Todd Okazaki and the staff at Hale'iwa Family Dental Center



Congratulates all graduates!

Aim high, set lofty goals, and pursue God's plan for your life. Make full use of the unlimited potential that each of you have.

"I can do all things through Christ who strengthens me."

—Philippians 4:13

IMUA!!!

Summer Splash!

SATURDAY, 6/21/25

rajanee
thai haleiwa

RAISING THE BAR HAWAII
R.T.B.
HAWAII

Get Ready, North Shore!

Rajanee Thai Haleiwa and Raising The Bar Hawaii are teaming up for a summer dining experience you won't forget. Dive into an exclusive prix fixe menu featuring bold, authentic Thai flavors—perfectly paired with elevated handcrafted mocktails that will awaken your senses.

To turn up the heat, we're bringing the vibes with a live DJ spinning feel-good tracks all throughout our Summer Splash Event!

Good food. Great drinks. Even better energy.

Only at Rajanee Thai Haleiwa—where summer tastes like paradise.

FOR PRE-SALE TICKETS PLEASE CALL
RAJANEE THAI HALEIWA: (808) 784-0023

@rajanee_thai_haleiwa @raisingthebarhawaii

Turtle Bay Foundation Awards \$200K in Scholarships to 86 Local Students

In its most impactful year yet, the Turtle Bay Foundation awarded \$200,000 in college scholarships to 86 students from Ko’olauloa and the North Shore communities, including 22 students who are either employees or immediate ‘ohana of Turtle Bay Resort team members. The charitable giving arm of Turtle Bay Resort held its 12th Annual Scholarship Awards Ceremony.

“Investing in our local youth is one of the most powerful ways we can give back to the place we call home,” said Doug Chang, President of Turtle Bay Foundation and General Manager of The Ritz-Carlton O’ahu, Turtle Bay. “With the support of our generous sponsors and donors, the Turtle Bay Foundation can open doors of opportunity for North Shore and Ko’olauloa scholars—helping them pursue higher education, focus on their goals and bring that knowledge back to uplift our communities.”

The Foundation’s scholarship program features four tiers of awards – ‘Ilima (\$10,000), Maile (\$5,000), Lehua (\$3,000), and Hala (\$1,000) – each named for a beloved native Hawaiian plant symbolizing the uniqueness and potential of every student recipient. This year, five exceptional students were named ‘Ilima Scholars, selected for their outstanding academic achievement, leadership and commitment to community service:

Aheirani Anderson, a 2025 Kahuku graduate born and raised in Kahuku town, majoring in pre-business at Brigham Young University in Provo, Utah.

Sione Pasi, a 2025 Kahuku graduate from Hauula, studying business at the University of Montana Western.

Lilly Hunter, from Lā‘ie, graduating in 2025 from Kahuku

High School, who plans to major in biology at Brigham Young University Hawai’i.

Pōmaika’i Ikalani, born and raised in Waialua, studying business marketing at the University of Hawai’i at Mānoa and getting her pilot’s license at Barber’s Point Flight School.

Emalia Freitas, a Lā‘ie local pursuing a data science degree at Willamette University.

“This scholarship from the Turtle Bay Foundation gives me the freedom to chase two dreams at once earning my business degree and becoming a licensed pilot,” said **Ikalani**. “I’m proud to represent the North Shore in both the skies and the classroom, and I hope to inspire other local students to work hard and never stop believing in what’s possible.”

“Growing up in my hometown of Hau’ula, I’ve always been taught to lead with heart and give back to my community,” said **Pasi**. “I’m motivated to make my ‘ohana and hometown proud with my next steps into college and bringing that knowledge back to my community. Mahalo to the Turtle Bay Foundation for supporting me in my educational dreams.”

This year’s Barbara Keen Scholarship, named after a The Ritz-Carlton O’ahu, Turtle Bay team member to recognize a student pursuing a degree in STEM, totaling \$2,000, was presented to Kahuku native **Malakai Vendiola**, a student at the Honolulu Community College Apprenticeship Trade School enrolled in the Journeyman Electrician Apprenticeship Program.

The Foundation selects recipients based on academic performance, financial need, extracurricular activities and community involvement.



Councilmember Matt Weyer and state Senator Brenton Awa joined the Turtle Bay Foundation’s Scholarship Awards Ceremony, celebrating its largest scholarship distribution to date. Photo: Turtle Bay Foundation

Waiialua High & Intermediate School

Senior Class Student Council

Madison Heath, President
 Kaili Webb, Vice President & Historian
 Lucile Williams, Secretary
 Ethan Pascual, Treasurer
 Nanea Milnikel, Sergeant at Arms

Senior Class Student Body Government

Maverick Ramiscal-Oury, SBG President
 Lily Paz, SBG Vice President
 Payton Wood, SBG Secretary
 Bayli Sober, SBG Historian

Graduating Class of 2025

Harold Agricola
 Brian Alcos-Takara
 Tirrell Allen
 Chelsea Arango
 Ryson Awaya-Lapot
 Mele Ayonon
 Haylie Bachiller
 Germaine Bagasol
 Ryden Baldonado
 Anndrei Ballesteros
 Anndrick Ballesteros
 Zekiel Balmoja
 Moani Barron
 Marcella Beschen
 Julia Boling
 Henua Caicedo Rapu
 Taylor John Calaro
 Aina Chiba
 Maceo Cohen
 Bella Colosimo
 Wyatt Crowder
 Kelis Crowley
 Kaena Dahlin
 Quennie Fhey Dancil
 Chase Dayacos
 Jade De Bois
 Malia Deodato
 Jerick Diana
 Harlee Dicion
 Samantha Dingal
 Tai Driscoll
 Maddy Lynn Duangprachanh
 Oliver Facer
 Dante Flores
 Kaydence Freitas
 Landon Fujishige
 Kanaloa Galiza
 Quade Green-Smith
 Aika Guzman
 Madison Heath
 Kailah Herron
 Jade Hiltbrand
 Timmy-Lee Honorato
 Mick Houser
 Rylan Icari
 Kiahni-Rene Jiminez

Sophia Jones
 Coda Kalama
 Anuheia Kawai
 Alexzander Keao
 Debbie Labajo
 Patrish Lamug
 Maluihi Lee
 Cash Manalo
 Makelah Maples
 Dylan Martinez
 Alika McCormick
 Chloe McKee
 Salonejareva Meaole
 Bailey Menor
 Jonathan Merlander
 Iris Miguel
 Tehani Militante
 Jady Miller
 Nanea Milnikel
 Iowane Moiha
 Madison Naho'oikaika
 Danny Nguyen
 Lahaina Nicely
 Dustyn Padron
 River Parlow
 Ethan Pascual
 Lily Paz
 Cody Perkins
 Reef Pollock
 Thomas Price
 Salvatore Puma
 Brayden Ramirez Wojtowicz
 Maverick Ramiscal-Oury
 Michael Ramos
 Jaydyn Repollo-Visitacion
 Shawn Reyes
 Kaleb Rice
 Gabriela Rivera Pagan
 Enzo Rose
 Josie Sardinha
 Steve Sebetich
 Bayli Sober
 Aidan Souza
 Alana Tan
 Landon Teixeira
 Brody Trask

Reef Trask
 Nuutea Van-Bastolaer
 Aidan Vela
 Harbor Ward
 Kaili Webb
 Lucile Williams
 Lanikila Wood
 Payton Wood
 James Zhorne

A Message from the Principal: Congratulations, Class of 2025!

Graduates of 2025, the moment you've been working towards is finally here. Step forward with **boldness and confidence**, ready to embrace the many opportunities that await you. As you embark on your next adventure, remember the foundation you built here at Waiialua High and Intermediate School. We are incredibly proud of all you've accomplished.

Congratulations, and **Go Bulldogs!**

Christine Alexander, Principal Waiialua High and Intermediate School



**START STRONG
 DREAM BIG-WORK HARD-MAKE IT HAPPEN
 FINISH STRONG**



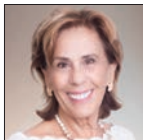
Congratulations

Hawai'i Graduates & Your Families!



April 2025 Oahu Real Estate Report

	Oahu single-family home median sales price: \$1,170,000
	North Shore single-family home median sales price: \$1,425,000
	Oahu Condominium median sales price: \$505,000
	North Shore Condominium median sales price: \$1,465,750



KARIN MOODY
OWNER, PB, REALTOR, RB-19578
808.392.7410



MEME MOODY
BIC, REALTOR, RB-22780
808.741.3835



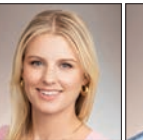
NOEL MARCHAN
REALTOR, RS-73977
808.282.0949



MICHAEL PIEKLO
REALTOR, RS-79930
808.551.6740



TRISH KIM
REALTOR, RB-24134
808.221.4200



ALEKS HUSMANN
REALTOR, RS-79671
808.979.5611



NATHAN AMATORE
REALTOR, RS-83694
808.780.2381



MASON KAHIAPO
REALTOR, RS-86947
808.721.8005

Local Knowledge. Personalized Service. The Right Home for You.

Better Homes and Gardens Real Estate Advantage Realty North Shore
Haleiwa Store Lots

66-111 Kamehameha Hwy. #902 | BETTERHAWAII.COM

©2025 Better Homes and Gardens Real Estate Advantage Realty North Shore. Better Homes and Gardens® is a registered trademark of Meredith Corporation licensed to Better Homes and Gardens Real Estate LLC. Equal Opportunity Company. Equal Housing Opportunity. An Independently Owned and Operated Franchise. Better Homes and Gardens Real Estate Advantage Realty North Shore are affiliates of Better Homes and Gardens Real Estate Advantage Realty.

HALEIWA ART



ART BY JACLYNN SABADO-EITEL

2025 Featured Artist Jaclynn Sabado-Eitel

Jaclynn (Jackie) Eitel was born and raised in Maui to artist parents. After graduating from Maui High School, she attended Kent state university to study art education. From 2011-2019 most of her work was focused in screen printing and wearable arts. In 2019 she exhibited her screen prints on wood at the Hankyu Hawaii fair in Osaka and in 2020 was selected in the Art Maui Juried show. In 2021 she exhibited in the gallery space of the Hankyu Hawaii Fair. Her art can be found in boutiques throughout the islands, mainland, and Japan.

Purchase a Poster at the Festival Shop and have it signed by Jackie!

ARTS FESTIVAL

THE 26TH ANNUAL HALEIWA ARTS FESTIVAL features over 120 juried visual artists as well as musicians, singers, dancers, student art and keiki art activities. The event takes place at Haleiwa Beach Park on Oahu's North Shore **SATURDAY, JUNE 21** and **SUNDAY, JUNE 22** from **10am to 5pm**.

Event attractions include both traditional and contemporary artists with original works and limited editions in painting, photography, printmaking, ceramics, wood, fiber, sculpture, jewelry, glass, digital and other mediums. **Art is available for purchase directly from the artists.**

This celebration also includes Performance Art every hour, with many of the artists presenting original music and dance.

Art demonstrations, community information, keiki activities and a wide selection of festival foods are also offered to enhance this exciting two day community event. **Spend the weekend with family and friends at the Haleiwa Arts Festival.**



ART
MUSIC
FOOD
FAMILY
FRIENDS
FUN &
FREE!

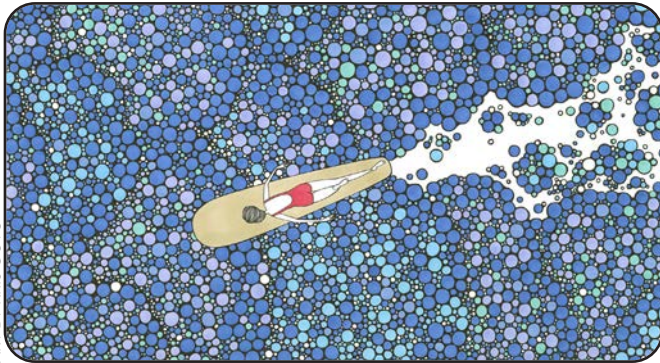
Sponsored By: **MATSUMOTO'S SHAVE ICE**

PERFORMING ARTS STAGE

SATURDAY / JUNE 21		SUNDAY / JUNE 22	
10AM	Wahiawa Hula Studio 2	10AM	David Lin <i>Featuring Sandy Puppy Band</i>
11AM	Honolulu Blend Show Chorus	11AM	Pacific Fleet Band Island Combo
NOON	Ryugen Taiko	NOON	Na Wahine O Ka Hula Mai Ka Pu'uwai
1PM	Darin Cumpston	1PM	808 Imposters
2PM	Jenny Yim	2PM	The Perfect Wave <i>Michael Tanenbaum Nick Gertsson</i>
3PM	Ian O'Sullivan	3PM	P3
4PM	Haleiwa Red Hots	4PM	Fleetwood Blac <i>Featuring Ginai</i>

COMMUNITY4ART

HALEIWA ARTS FESTIVAL



ART BY KRIS GOTO

2025 Featured Artist Kris Goto

Kris Goto is a Honolulu-based artist originally from Kagoshima, Japan. She spent her formative years in Hong Kong and New Zealand before moving to Hawai'i in 2006. Initially aspiring to become a manga artist, she drew inspiration from legendary

creators such as Yuu Watase and Tezuka Osamu. This early passion laid the foundation for her intricate penwork and distinctive character-driven style, which continue to define her art today.

Purchase a T-Shirt at the Festival Shop and have it signed by Kris!

ONO FESTIVAL FOOD

Aloha & Mahuhay • Da Hub • Eat Plants Elevate • Hometown BBQ • Hott Potstickers • Olay's Thai Food Express
Pineapple Road Beverage Co. • Santis Paella • Str'eats of Aloha • Tropicold Wai • Uncle's Ice Cream • Waimanalo Country Farms

KEIKI TENT

Hands-On Creative Art Activities
For All Ages!

Keiki Coordinators: TINA MARKEL & KAYLA FITZGERALD



COMMUNITY TENT

Meet With Special Interest Groups
In Our Community!

Share Information, Find Support and Collaborate on Shared Goals

2025 VISUAL ARTISTS

AHOLELEI, OFA
ANDERS, HEATHER
APPASAMY, ROBIN
ARKIN, NOA
BALLOT, ANDY
BARRETT, TENILLE
BEASLEY, CHAS
BENDO, CHRISTIAN
BENNETT, BECKY
BENUSKA, NICK
BIRNBAUM, ALICE
BOHLANDER, JESSICA
BOINAV, STEPHANIE
BOLIOLI, EDUARDO
BOLOKER, JUDD
BOROVOK, MARINA
BOSSIAN, JOHN
BRADEN, BILL
BROWN, MARK

BURNSIDE, DANIELLE
CARLSON, GLORIA /SCOTT
CASEY, DEBRA
CASTRO, LUTI
CAVANAUGH, JOHN
CHACON, YTALA
CHIVERS, ANGELICA
CHING, COURNEY
CHINO, YUTAKA
CLOSE, MARA
COBB, TAYLER
COFFMAN, MATT
COMSTOCK, KEALE
COX, LINDA
CUNNINGHAM, MARK
D'ANGELO, CAROL
DEL ZOTTO, MARCELLO
DELVENTHAL, ERIN
DENG, CHRISTINE

DOI, DEXTER
EMERY, BRIAN
FLORES, MOANA
FORNEY, DANIEL
FORNEY, PAUL
FU, TESIA
GARDEAZABAL, ANA LUCIA
GARZON, SERGIO
GIAMBALVO, SUSAN
GINELLA, MELISSA
GOKCE, UMIT
GONZALEZ, YOLANDA
GOTO, KRIS
GRACE, VANESSA
GUERRERO, JERRY
GUERRIERO, MARIA
HALL, KRISTINE
HART, AMY
HAYASHI, NAOKI

HAYWOOD, RYAN
HENNALLY, DIANE
HESS, HAUNANI
HOMCY, JENNIFER
HOOD, RHODA
HOWARD, MARK
ILNICKI, JOHN
JAWORSKI, LISA
KAMAMALU, KIRA
KEAN, STEVEN
KIM, KEALA
KING, BRETT
KUCHAR, NICK
LAM, MISHA
LEE, JUNGEUN
LEHMAN, CATIE
LONG, KIMMY
MANLEY, SCOTT
MERCER, SHERA

MOLINA, LINDA
MOSC, EWA
MOSIER, TIGER
MULLIGAN, MOLLY
MYERS, SHANE
NEWLIN, LORNA
NOMURA, IAN
NORTON, KATHY
OCHOA, TANYA
OJERIO, JT
ORTA, BRITTANY
OTANI, MIN JUNG
RAGAN, ERI
RATLIFF, KIMBERLY
REYNO, KRISTEN
ROY, JACKIE
RUSH, DANIELLE
SABADO-EITEL, JACLYNN
SAKAMOTO, JULIA

SAWIKI, KAREN
SCHAPER, JULIE
SERAFINI, PATRICIA
SEU, NICOLE
SHAMIR, JORDAN
SIKKINK, ANDREA
SOLOVIOV, VITTORIO
SOULÉ, SPENCER
STEFFANY, LUPE
STEVENS, SANDY
TESTA, SABRA
TOSAKI, JENNIFER
TRUYOL, STEFANI
VERMILLION, NICOLE
WADSWORTH, KATE
WHITTAKER, HEATHER
WILSON, ADRIENNE
WOO, NICOLE
YASUI, GERRY
ZHANG, CASSIE



COMMUNITY4ART

P.O. BOX 1141 / HALEIWA, HI 96712 / 808.637.2277 HaleiwaArtFestival.org

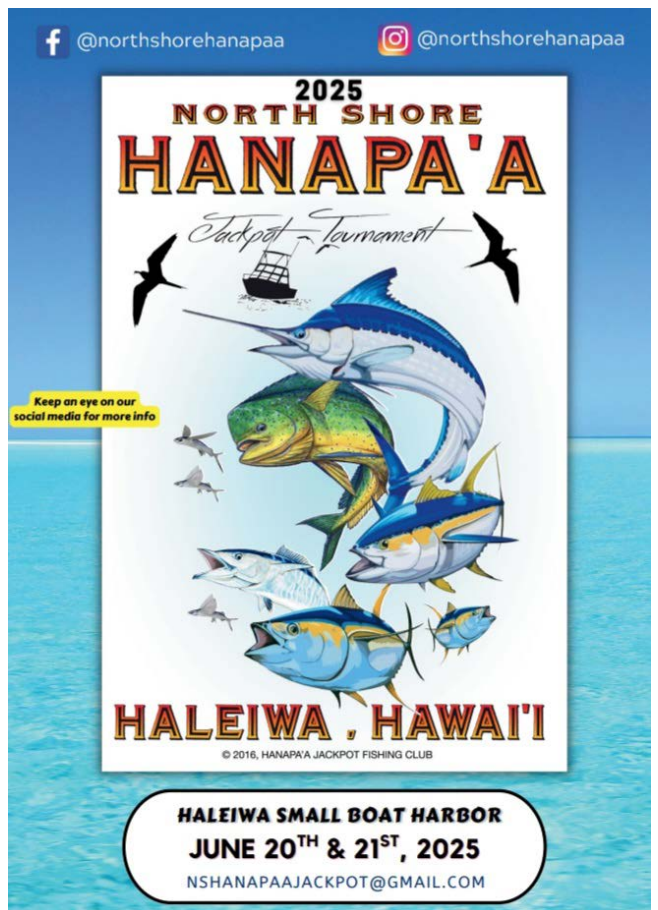
Kahuku Shared Use Path Paving its Way to Reality

By Sunny Unga, KCA President

Kahuku Community Association (KCA) is thrilled to announce that an ADA-accessible Pedestrian and Bike Path (Kahuku Shared Use Path) is paving its way to reality. After years of concern over the lack of safe walking and biking routes along Kamehameha Highway, especially for students and families, this long-overdue project is finally moving forward.

For far too long, residents have had to navigate an unsafe, informal path alongside Kamehameha Highway, putting students and pedestrians at daily risk. When KCA initially approached the Hawai'i Department of Transportation (DOT), this project wasn't considered a priority and was effectively postponed until all higher-ranking initiatives were completed. Determined to move things forward, KCA galvanized additional support by partnering up with North Shore Community Land Trust. KCA mobilized the community and gathered letters of support from Kahuku Elementary School, Kahuku High School & Intermediate, elected officials, local organizations, local businesses, and the Ko'olauloa Neighborhood Board. This united effort successfully demonstrated the urgency of the need.

On May 23, 2024, DOT Director Ed Sniffen informed KCA that Kahuku's project would be elevated in priority and expedited. This announcement was officially confirmed at KCA's first community meeting on April 16, 2025 at the Kahuku High School Cafeteria. This milestone is a testament to unwavering persistence, grassroots advocacy, and community-led leadership. What began as a distant aspiration has become a tangible, imminent improvement to daily safety and quality of life. We look forward to the community's continued participation in upcoming meetings as we move into the planning and design phase of the Kahuku Shared Use Path—ensuring it reflects the needs, values, and voices of the community.



AD VICTORIAM

SAINT MICHAEL SCHOOL
WAIALUA, HAWAII

Congratulations!

to the alumni of Saint Michael School who make-up this year's graduating high school and eighth grade classes!

GRADUATES

HIGH SCHOOL	GRADUATES		EIGHTH GRADE
◆ Mariah Carter	◆ Jaius Beleno	◆ Shamila Green	
◆ Salome Heiderscheidt	◆ Phoenix Carter	◆ Angela Johana Quiang	
◆ Nateli Kihuchi	◆ Lucas Curvan	◆ Jelasa Johnny	
	◆ Drake Dunong	◆ Justin Merlander	
	◆ Mail'e'ailana Fuhumoto	◆ Nawailani Raymond	

Kahuku High & Intermediate School

Epirosalina Magalei
Senior Class President

Tatum Hanohano
Vice President of Service

Kiarra Casey
Vice President of Social Activities

Josiah Uyehara
Vice President of Publicity

Lavinia Togiai
Vice President of Media

Graduating Class of 2025

Acyra Afalava-Byous
Kaimi-La'akea Ahsukealohasmith-
Kamakeeaina
Jaychelle Akoi-Shea
Kayla Allred
Aheirani Anderson
Trytan Andrade
Kyla Andrews
Kaikea Annandale
Maxine Apelu
Zion Asuncion
Faleali'i Atuaia
Mursan Auelua
Austin Auva'a
Mohan Jylle Ballesteros
Jordyn Barenaba
Fangafeatu Blanchard
Caleb Bleazard
Maria Bohnet
Hugh Boydston
Noa Bridges
Ethan Brothers
Mikayla Cacurak
Damian Cadina
Te Arawa Campbell
Naomi Cannon
Kelvin Cao
Kaimana Carvalho
Kiarra Casey
Kemy Castillo
Ava Cepeda
Jesse Cheney
River Clark
Malina Corotan
Susan Cravens
Kelsea Cummings
Cole Davis
Kainoa Davis
Ezekiel DeMartini
Sharai A Doucett-Moore
Kahalelaukoakuakahela Emmsley
Sula Malia Esera
Teuila Esera
Evan Espiritu
Rivers Evans
Spencer Evans
Tezmun Falevai-James

Nakoa Fernandez
Malosi Fiatoa
Alexis Fields
Kaiena Flores
Maximum Fonoimoana
Tevaiarii Foster-Blomfield
Zanaiyah Fotu
Kauan Freitas
DJ Fuga
Liana Gho
Benson Goo
Jase Haili
Dustin Halemano
Rylin Hall
River Hannemann
Tatum Hanohano
Tessa Haye
Teasja Haythorn
Maihetoa Hekau
Makamau Hekau
Hutia Hippolite
Teian Hu
Thor Hubbell
Bella Hunter
Lilly Hunter
Otion Ingbino-Kaai
Amaya Jackson
Shekinah Jensen
Tekahurangi Jeremiah
Leo Johnson
Keahialaka Judd-Au
Tia Kaahu
Ezekiel Kaaialii
Ahonui Kahaialii
Manoa Kahalepuna
Ashlynn-Leah Kahaulelio
Tyrei Kaio
Raywes Kalili Gomes
NaiMona Brandon Kamiko
Alika Kanahela
Sheadon Kanoa
Kanoa Kauwe
Lawai'a Keawe-Fonoimoana
Sidney Keni
Heleilehiwaalohanonakupuna Keo
Riley Kim
Karver Kirschbaum

Niki Kositwongsakul
Keaton Kurtz
Halahunu Langi
Ofa He Lotu Latu-Vaki
Isela Latuselu
Cairo Lauaki
Helaman Lauaki
Trachelle Ann Lei Layola
Aleesa Lem
Storm Lizama-Kaahu
Zylaher Lolotai
King Tunoa Lolotai
Noelani Lopes
Lorenzo Lopez
Eleanor Ludovico
Epirosalina Magalei
Jacob Maiava
Eden Mailo
Ginger Maletta
Aiden Manutai
Dallynn Manutai
Tiare Marasco
Wailea Mariteragi
Leacy Mark
Ka'ai Marquardsen
Jillian Mataele
Trey McGill
Sisilia Moala
Ivy Moffat
Rosa Morgan
Samuelu Morgan
Lily Mouritsen
Halakilangi Muagututi'a
Leila Belle Nahoopii
Leilani Nakaahiki
Charlotte Nautu
Jesyden Nawahine
Kehaulani Newton
Lillyana Newton
Molly Nguyen
Niko Niko
Maximuz Niu
Mosianangatu Niutupuivaha
Ikaikaokalani Norton
Lekel Okouchi-Landry
Mauricio Ordonez
Kanoa Orr

Marysol Padilla
 Jackson Pagador
 Sione Pasi
 Mele Pauni
 Marlee Peters
 Keani Phillip
 Lesina Piena
 J Pierce
 Joseph Plicka
 Ku Ponciano
 Beau Pruett
 Terilyn Pualoa-Ueda
 Kyra Pukahi
 Tearikinui Pulotu
 Giana Purcell
 Jetlee Purcell
 Marceus Purcell
 Simon Quinton
 Orion Ramie
 Po'akalani Rangel
 Ezra Rapozo
 Dallin Reece
 Logan Reese
 Cha'lei Reid
 La'iku Renaud-Wilkins
 Benjamin Roberts
 Ambrose Robertson
 Taysha Rodrigues
 Maia Rowland
 Livija Ryun
 Paul Saunders

Petelo Sefo
 Luana Seufale
 Brandon Shaw
 Ikenaoka'uhanehemolele Siliga
 Rylan Sivertsen
 Jared Slade
 Lono Solomon
 Kalikolehuapuakeaokumupikuhewe-
 hikahikonowaiono Sproat
 James Steffany-Fiame
 Marley Suguturaga
 Taaron Swafford
 Blaize-Laine Tafuna
 Tangiloto Tafuna
 Jayden Tagalao
 Wetekia Tagatauli
 Lesieli Taulanga
 Henieta Tausinga
 Xailee Teixeira
 Kaiona Tejada
 Nikotemo Teketia
 Pikakeitinehemarama Teriipaia
 Viliami Thompson
 Hubbell Thor
 Xzavier Ticman
 Karly To'oto'o
 Lavinia Togiai
 Tamahei Tsing
 Toa Tufele
 Bradley Tuifua
 Sieni Unga

Josiah Uyehara
 Ammon Vaka
 Salote Valikoula
 Malakai Vendiola
 Tristyn Vendiola
 Enoch Waite
 Theaonalani Wasson
 LeBron Williams
 Leyton Wilson
 Posia Wily
 Talailaelagi Wily
 Madylin Wiser
 Alexander Wolfersberger
 Efalame Wolframmm
 Jonah Yoshimura



Congratulations to the Kahuku High School Class of 2025!

Your journey has been nothing short of extraordinary, marked by academic excellence, athletic achievement, and meaningful contributions beyond the classroom. This year, an impressive 27 valedictorians were honored at graduation, a powerful testament to the dedication, discipline, and intellectual strength of our students.

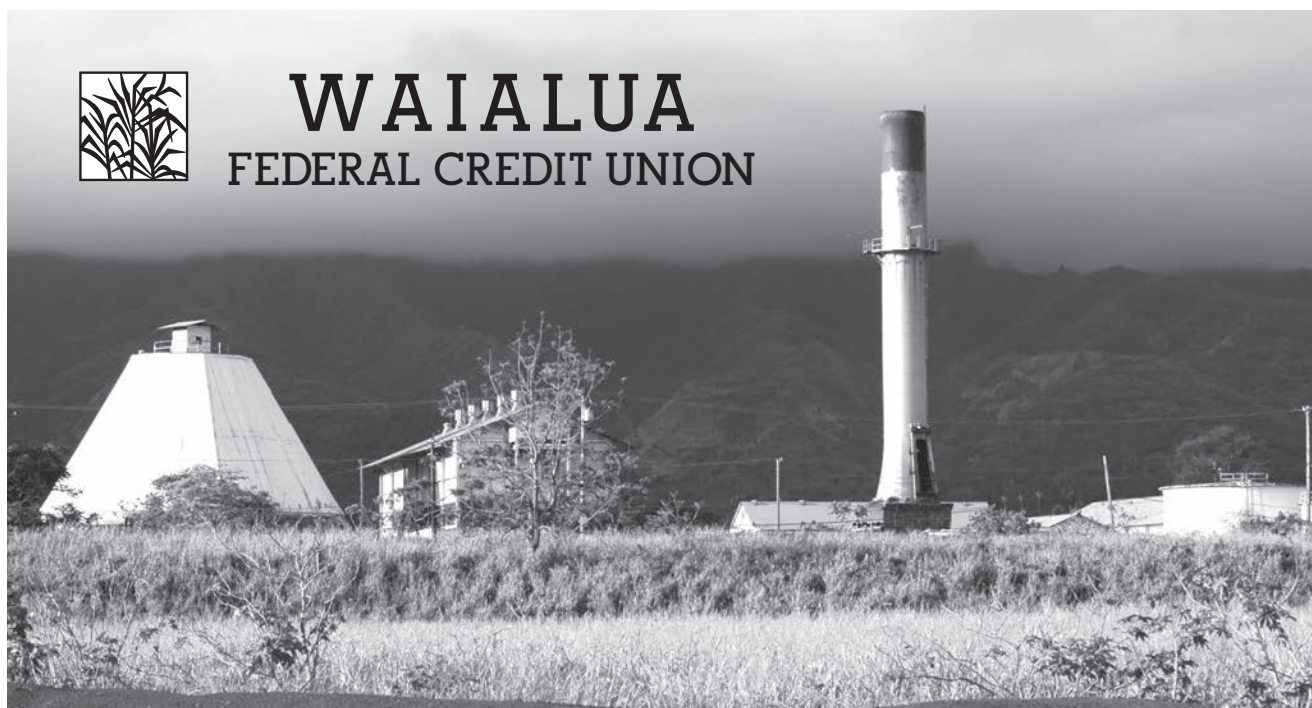
As you step into the next chapter of life, may you carry with you the pride of Kahuku and the spirit of aloha that defines our close-knit community. The legacy you've created through hard work, resilience, and unity will continue to inspire generations to come.

Mahalo to the teachers, families, and community members who have nurtured and guided these young leaders along the way. To the Class of 2025, congratulations, and may your future be as bold, brilliant, and enduring as the legacy you leave behind.





WAIALUA FEDERAL CREDIT UNION

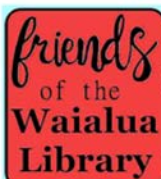


Serving the North Shore Community

www.waialuafcu.com

(808) 637-5980

- SAVINGS
- CHECKING
- LOANS



FriendsOfWaialuaLibrary@gmail.com
808-637-8286

Readers' Group

Thursday, June 26, 9:30-11am

Title: "Miki's Mad" by George Tanabe

Writers' Group

Thursday, July 10, 9:30-11am

Topic: "True Love Part 2"

Family Story Time & Activity

Every Saturday, 10:00am

Computer Introduction

by appointment - 808-637-8286

Used Book Sale

Saturday, July 19, 8:30-12:30

Library closed for Kamehameha Day 6/11

Congratulations to the 2025 Kahuku and Waialua Graduates



NORTH SHORE

The world is changing in huge ways, but what's important still stays the same. Consider joining our organization and help us keep the North Shore -

Clean, Green, and Beautiful.

visit us at

www.outdoorcircle.org

BULLETIN BOARD

Munden Design & Build

Lic.#BC19632

Design • Plans • Permits • Construction
Additions & New Residences

808 391-8616

Providing quality work since 1978

World Class Notary

Based in Waiialua, HI

- NOTARY
- BACKGROUND CHECKS
- FINGERPRINTING
- IN HOUSE PARALEGAL
- APOSTILLE
- TRANSLATION SERVICES

(808)489-6900

N-C PLUMBING & SUPPLY

Cont. Lic. No. C-8913



- RESIDENTIAL & COMMERCIAL SALES & SERVICE
- CONTRACTING & DESIGN
- HOME PLUMBING SERVICE
- PLUMBING FIXTURES, HEATERS • FREE ESTIMATES

Nestor P. Calilao (Owner)

P.O. Box 769
Waiialua, HI 96791

Business: (808) 637-8662
Cellular: (808) 372-8718



Congratulations 2025 Graduates!

Oahu SPCA helps over 9,000 animals each year.
Every life is precious. oahuspc.org



HALEIWA, HAWAII

Over 50+ Years of Professional Services and Historic
Images to the Community. AKA "Nostalgic Photos Hawaii"
To See 1000+ Images Search: northshorephotohawaii.com



Congratulations!
We are proud of you, Seniors!

'Got CRB' Tree Injection Is the Answer



Inoculate your palms before or after they land
Who ya gunna call? 808 Beetlebusters

808 633 1046

jonnyb@808beetlebusters.com
www.808beetlebusters.com

A non-invasive, drug free solution to
help reduce symptoms of:



- ADHD
- Anxiety
- Insomnia
- Negative Moods
- Memory Issues
- Concussions

neurofeedbacktherapycenters.com

and other neurological
symptoms



Would you like to
receive the
North Shore News
via email
FREE and in
COLOR?

Just send us a
message at:
NSNHaleiwa@gmail.com



www.rajaneethai.com

at Hale'iwa Store Lots - Dine In or Take Out
Mon, Tues, Thurs 11:30am - 8pm
Fri, Sat, Sun 11:30am - 9pm
Wednesday 4pm - 8pm 808-784-0023



1-2-3, Count on Ko'olauloa Health Center

We are part of a nationwide healthcare network that serves 1 in every 10 Americans.

Our Hau'ula and Kahuku medical and mental health providers, pharmacy, dentist, and podiatrist to provide healthcare to ALL regardless of ability to pay.

KHC serves Oahu's #1 most medically underserved region. Let us take care of you and your 'ohana. **Call 293-9231** for appointments or urgent care.

koolauloachc.org



Join us for the 2025 Summer Reading Challenge!



KAHUKU PUBLIC AND SCHOOL LIBRARY

- ✓ All ages can participate!
- ✓ Track your reading on or off island, attend programs and/or enjoy library activities to enter the prize drawings.
- ✓ Grand prize: **Four round-trip tickets on Alaska Airlines.**



Experience the power of storytelling through music, chants, and poetry. Check out our calendar at librarieshawaii.org/kahuku

BACK TO SCHOOL
Operation
Backpack 2025



How Can You Help?

Sponsor a new backpack loaded with school supplies needed for each grade (K-12).

This year the Operation: Backpack team will be working with the area schools to distribute backpacks.

Organizations and businesses interested in sponsoring backpacks or school supplies please contact Linda/ NSN.

We accept monetary donations, checks can be made to:
 North Shore News or Once A Month Church
 (#26-0503178)

PO Box 117, Haleiwa, HI 96712
 For more information or credit card/online donations call Linda at 808-780-8037

Sponsored by North Shore News and Once A Month Church

Haleiwa Outrigger Canoe Club is accepting donations at the Regatta on Saturday, June 21st at their food tent

Blue Note
 HAWAII

Thunderstorm Artis

June 27 at 6:30 & 9pm

KSSK
 12.3 HAWAII



**NORTH SHORE
 FOOD BANK**

IG:@nsfoodbank
 Sponsors: Hawaii Food Bank & Aloha Harvest

DISTRIBUTION UPDATE

**3rd Wednesday of the Month
 at Kaiaka Bay Beach Park**

Wednesday, June 18, 12 noon

Wednesday, July 16, 12 noon

Wednesday, August 20, 12 noon

Visit us at the WCA every 2nd Wednesday of the month 10am-1pm

For more information and donations contact :
 Linda (808) 780-8037





CLASSIFIEDS

The North Shore News is published every four weeks and available at area businesses and locations. Digital copies are emailed in color. The North Shore News is also available by mail subscription.

PRESS RELEASE POLICY: Submit press releases, email to the Editor. Releases should be viable news stories or human interest stories and are published on a space available basis only. You may attach photos. We reserve the right to edit and/or refuse all submissions including advertising.

EDITORIAL POLICY: The North Shore News is a community paper. We welcome articles, pictures and Letters to the Editor.

CLASSIFIED AD RATES: Classified ad rates are \$6.00 per line with up to 27 characters per line. The box ads are \$40.00 per column inch. Submit classified ads by email. Phone calls are always welcomed.

Views expressed by our contributing writers and advertisers do not necessarily reflect the view of the management and staff of the North Shore News. All rights reserved. Reproduction in a whole or part without permission is prohibited. 2025

Editor & Classifieds
Linda Seyler

Typography
Downtown General Store

Contributing Writers
Betty Depolito
Richard Sterman
Noah Grodzin
Vice Chair Matt Weyer
Representative Amy Perruso

Photography
Banzai Productions
Bill Romerhaus
North Shore Photography



Please recycle this newspaper.

SERVICES

LegaSea Energy Solar

Christensen Bros.
Construction Inc.
since 2005

Specializing in off grid livin'
Custom homes
License BC 27977 -
808-351-4657
@legasea_energy

BEE HIVE

\$250.00/ 10 FRAME BEE HIVE
LANGSTROTH
WILL PROVIDE ASSISTANCE
MASTER BEEKEEPER
682-1955.

**Dog/Cat Nail Trimming
at Your Home
808-388-5336**

Andres Plumbing Residential & Commercial

License #C-24500
35 yrs experience
808-256-7337

HONEY BEE HIVE SWARM

Removal & Relocation
(808) 724-9966

ANGELS PLUMBING

Repairs
Remodeling
Renovation

638-7878
Lic. #C12004



FREE ADS

Garage & Yard Sales,
Reunions, Lost & Found.
Email ad to:
NSNHaleiwa@gmail.com

HAWAII TREE CO.

Trimming & Removal
Professional-Reliable
Free Estimates
808-462-2749

GERMAN CAR SERVICE

Professional-Qualified
Technician
Call Gary
637-6800

ICC MOBILE DETAILING

Interior deep cleaning,
water spot removal,
paint enhancement.
Professional car detailing
at the comfort of your home.
808-638-1900

North Shore Martial Arts Self Defense Kenpo Karate

Free Community Sponsored
at the WCA -Haleiwa Gym
Mon & Wed 7pm -8pm
Kelley 808-216-4335

LocalHawaiianProduce.com

Sign up for fresh organic
produce delivered the day
it's harvested. No tariffs!

Noah Boy Pump Service LLC

Cesspool, Septic &
Porta Potty Sewage Waste
Contact:
Noah **(808) 489-7850**

Paumalu Electric Inc.

new construction,
remodels and rewiring,
service and repairs.
Lic. C-18074 808 638 9054

BUSINESS SERVICES CENTER

Fast & Convenient Copy, Fax, Scan,
Computer/Internet, Laminate, & More



Across from
the Haleiwa
Post Office

637-4558 • gonorthshore.org
#gonorthshore

Retired General Contractor

30 plus years -Specializing
in home and structural
repairs, fencing, painting
and more.

Gregg Biemann
808-778-0234

LOCAL AUTO BODY & PAINT

Call Rick Estrada
(808) 216-9419

Advertise Here

Place your classified ad
here! Classified ad rates:
\$6 per line, \$40 for a box
ad. For information or to
submit your ad email
NSNHaleiwa@gmail.com

TAI CHI Free Classes

Monday & Wednesday
9:30am - 11am
Waialua Recreation Ctr
for info: 808.489.5426

HOW TO CONTACT THE NORTH SHORE NEWS

Letters to the Editor, and other items submitted for publication consideration may be sent to us via:

MAIL: P.O. Box 117, Hale'iwa, HI 96712

E-MAIL: NSNHaleiwa@gmail.com

NSN4Linda@gmail.com

PHONE: (808) 780-8037

www.northshorenews.com

CLASSIFIED ADS

Next Issue - July 2, 2025
Deadline Date - June 18, 2025

Would you like to receive the North Shore News via email in COLOR!
Just send us a message at: NSNHaleiwa@gmail.com

OFF da ISLAND
Are you leaving Oahu on vacation or business? Do you live on a neighbor island, the mainland or foreign country and subscribe to the NSN? Send us a photo with someone in front of a sign or landmark holding a copy of the NSN or send a photo without the NSN. Email your photo with a caption including names, place of residence and photo location. NSNHaleiwa@gmail.com

Now It's Time to Get Ready for Hurricane Season
Prepare yourself and your family Visit honolulu.gov/dem for tips on how to make a plan for disasters.

FREE ADS
Garage & Yard Sales, Reunions, Lost & Found.
Email ad to: NSNHaleiwa@gmail.com

North Shore Service Center
2nd Wednesday Every Month
10am - 12:30pm at the WCA (Hale'iwa Gym)
Wednesday, June 11
Please Join Us!
All are welcome!
Assistance in housing, medical, dental and fellowship by: North Shore Food Bank, Ko'olauloa Health Center, IHS, Ke Ala Hou West-Oahu, Ke Ola Mamo, U.S. Vets, River of Life Mission, Premier Benefits (Medicare) and more...
To join us as a provider or for more information call Linda 808.780.8037

North Shore Food Bank
IG @nsfoodbank

HELP WANTED

Household Help
Beachfront Estate
16 hours per week
808-637-0808

MATSUMOTO SHAVE ICE
Now Hiring!
Apply in person daily
10am - 6pm
808-637-4827


Surf N Sea
Join the crew at Haleiwa's original surf shop. Immediate full and part-time openings for POSITIVE, MOTIVATED, and PERSONABLE individuals. *GOOD PAY + MONTHLY BONUSSES + BENEFITS
Ocean Sports experience and/or Japanese speaking is a plus.
Apply in person daily from 9am to 7pm!

The Department of Parks & Recreation is hiring!
We are looking to fill Summer Fun work positions: Summer Student Aide, Summer Recreation Aide, and Summer Swim Aide. We are also looking for year-round work positions: Recreation Aide, Attendant Service, and Lifeguard. Anyone interested, please contact or stop by:
Waialua District Park
808-768-6673
Hale'iwa Surf Center
808-768-6837
Sunset Beach Rec. Ctr.
808-768-6838

MISCELLANEOUS

RENTAL NEEDED
Single female needs studio or one bedroom, no pets or kids. Lived on the North Shore all of the 70's and most of 80's and am coming back. Start month to month for 2/3, if good fit go to long term. \$2,000 max, hope lower. Call text, email 480 549 6023 pattinew25@gmail.com. Start July or mid July.

James Campbell Wildlife Refuge
Sustainable Saturdays Saturdays, 10am - 2pm
June 7: World Oceans Day
Remove marine debris and learn about our oceans
June 21: Albatross Day
Restore habitat for our resident moli and ka'upu
July 12: Bee the Change
Bee more Sustainable!
To register and/or questions, email oahu_nwrc@fws.gov


HISTORICAL TOURS
Walking tours of historic Hale'iwa and Waialua Towns by local historian
\$20 by appointment
808-342-8557
info@WaialuaHistoricalSociety.org

Waialua Health Fair
Saturday June 28, 10 AM to 2 PM
Sponsored by Haleiwa Waialua Historical Society at the Waialua Sugar Office Building
67-202 Kupahu St., Waialua
Local speakers on Healthy Aging, Long Term Care, Fall and Risk Prevention.
Free health screenings, Medicare Info, children's game/ crafts, and Waialua's Lunch Wagon.

Drug Problem? Call Narcotics Anonymous
808-734-4357
Meeting 7pm Mondays
Cottage 2 behind Waialua Community Asso.
66-434 Kam Hwy Haleiwa

Coconut Rhinoceros Beetle response:
for info visit hdoa.hawaii.gov/pi/main/crb/
email: BeetleBustersHi@gmail.com
phone: (808)643-7378
call or text: (808)678-5244

Hawai'i Statewide Marine Animal Stranding, Entanglement, and Reporting Hotline
Includes stranded/injured sea turtles, monk seals, dolphins, and whales.
Phone: (888) 256-9840

First Brazilian Church of Hawai'i Assembly of God Bethlehem Ministry
- 67-174 Farrington Hwy, Waialua
Wed 7:30pm
- 1007 Koko Head Ave, Honolulu
Wed 7:30pm Sun 6pm
"The Lord Jesus Christ cares about you!"

Haleiwa Town Center Office Space for Lease
Convenient location near Stonefish, Jorge's, Longs, Bank of Hawaii, and American Savings Bank.

FOUND
Jewelry found near Dole Park
Text with description: 808-756-3709

Save the Date Bon Dances
Haleiwa Shingon Mission
July 11 & 12
Haleiwa Jodo Mission
August 1 & 2

North Shore Serenity Al-Anon Family Group
meets 6:30 pm Wednesdays at St. Michael's Church, Outreach Room, 67-340 Haona St, Waialua. Participants may also attend virtually via Zoom ID 84783266578 Password 809980.
Open to anyone who believes his or her life may have been affected by someone else's drinking.
Additional information available at www.al-anon.org; or by calling 808-546-5647

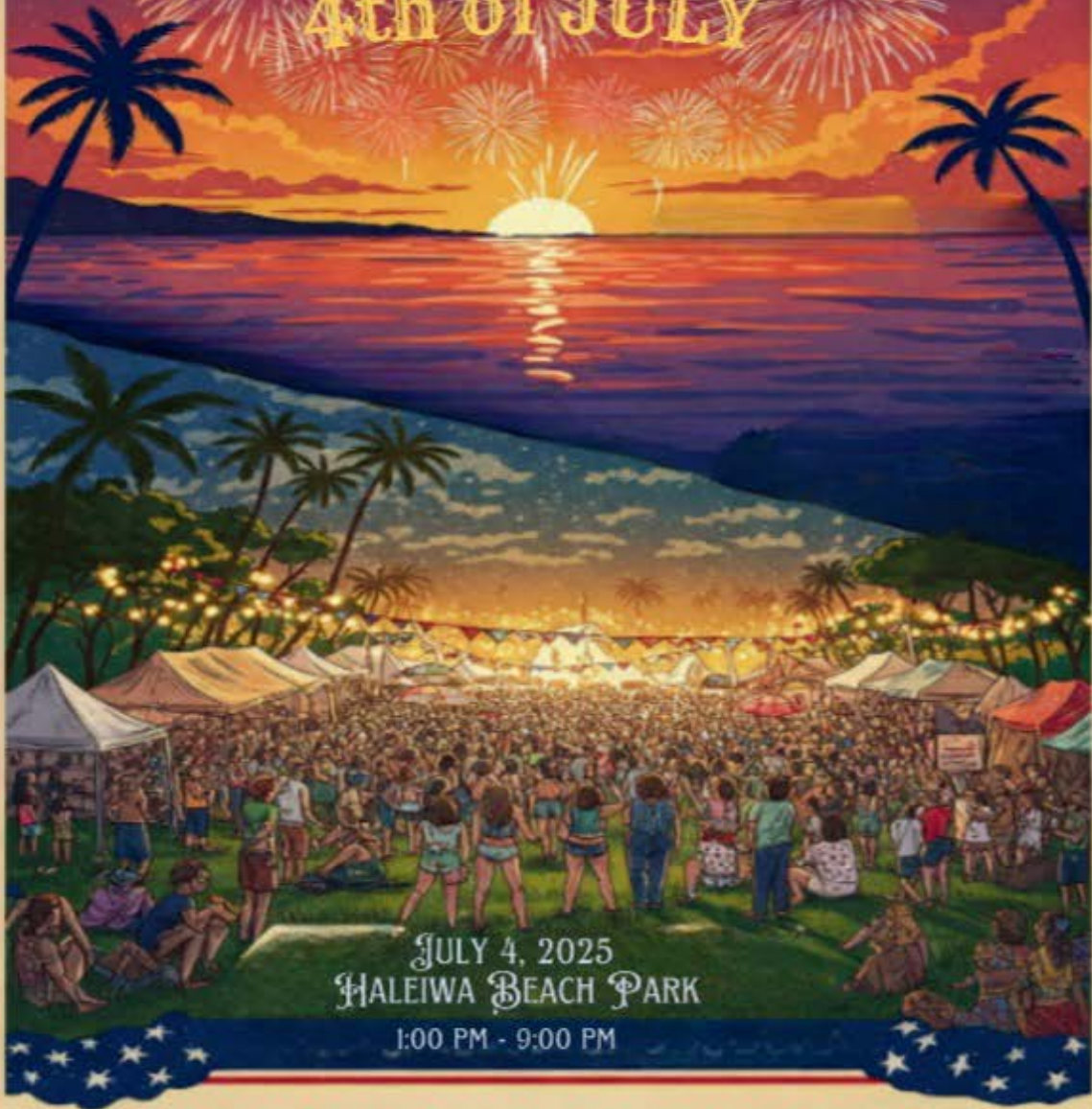


WAIMEA VALLEY



HALEIWA

4th of JULY



JULY 4, 2025
HALEIWA BEACH PARK
1:00 PM - 9:00 PM

FIRE WORKS | VINTAGE CAR | SHOW
LIVE MUSIC | FOOD & DRINKS | FAMILY FUN

